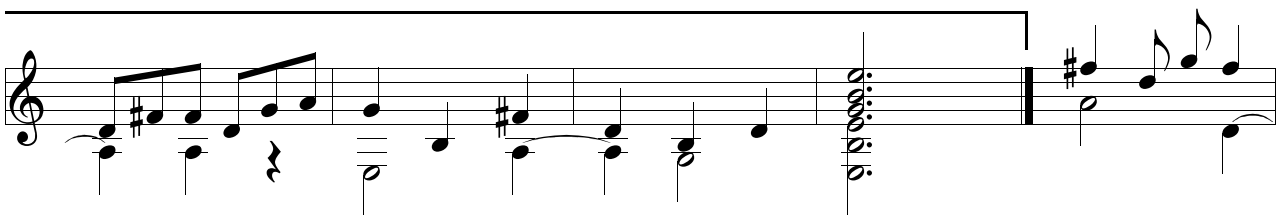
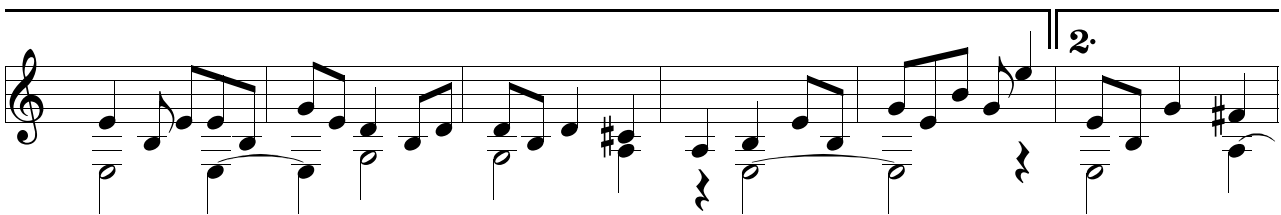
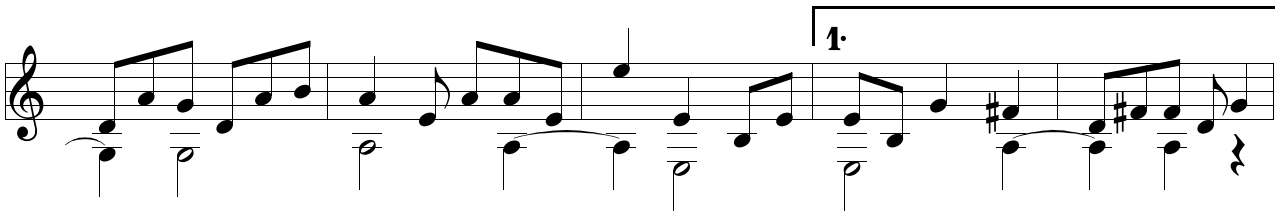
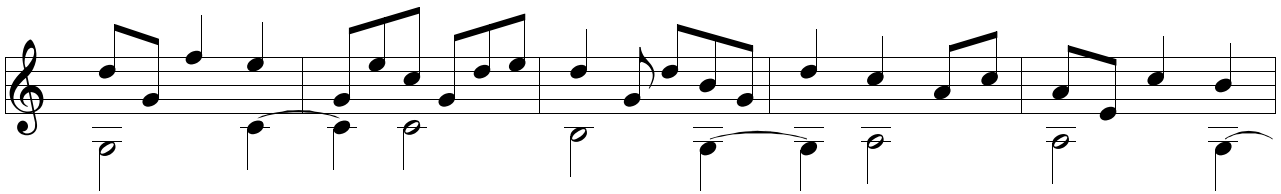
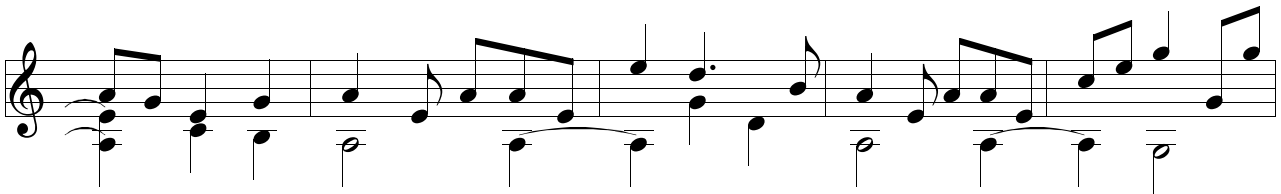
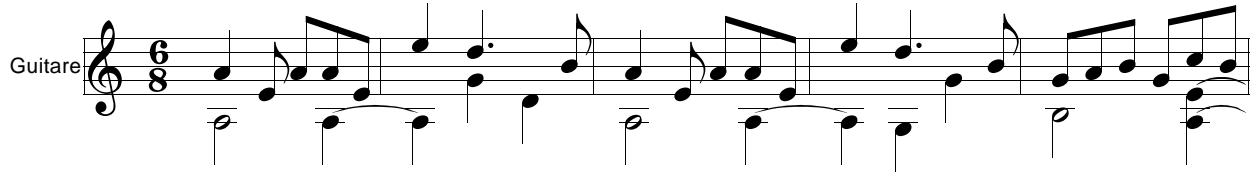


# Mélodithèque 1-24

Bernard GARDE



First musical staff showing a melody in treble clef and a bass line in bass clef. The melody consists of eighth and quarter notes, with a key signature of one sharp (F#).

Second musical staff showing a melody in treble clef and a bass line in bass clef. The melody continues with eighth and quarter notes, maintaining the key signature of one sharp.

Third musical staff showing a melody in treble clef and a bass line in bass clef. The melody continues with eighth and quarter notes, maintaining the key signature of one sharp.

Fourth musical staff showing a melody in treble clef and a bass line in bass clef. The melody continues with eighth and quarter notes, maintaining the key signature of one sharp.

Fifth musical staff showing a melody in treble clef and a bass line in bass clef. The melody continues with eighth and quarter notes, maintaining the key signature of one sharp.

Sixth musical staff showing a melody in treble clef and a bass line in bass clef. The melody continues with eighth and quarter notes, maintaining the key signature of one sharp.

*Da Capo Al Fine*

Seventh musical staff showing a short melodic phrase in treble clef and a bass line in bass clef, consisting of three notes.