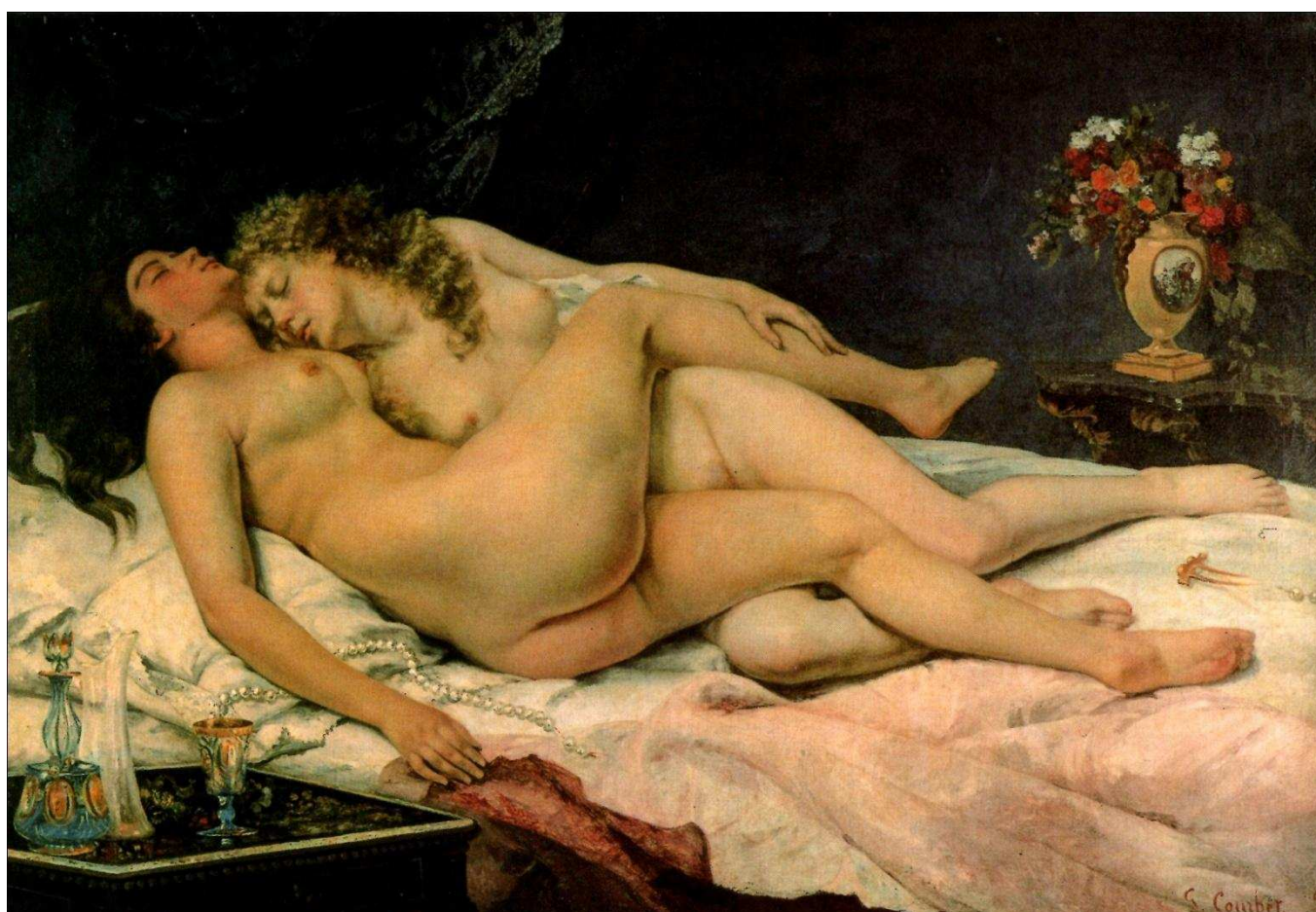


*Armand Louis Couperin (1727-1789)*

*Les tendres Sentiments*

*D'après "Pièces de Clavecin", 1751*

*Version révisée pour le Piano seul*



*Gustave Courbet (1819-1877), La Luxure dans le sommeil, 1866 - Paris, Musée du petit Palais*

*An&An*

Keyword: zencovich scores - url: <https://www.free-scores.com/Download-PDF-Sheet-Music-anan.htm>

© 2022 Antonio Zencovich (Italy) - All rights reserved

# Armand Louis Couperin (1727-1789)

## Les tendres Sentiments

D'après "Pièces de Clavecin", 1751 - Version révisée pour le Piano seul

*Andantino affettuoso (un poco rubato)*

*Arr. An & An*

Piano

mf

9/16

Detailed description: This system contains the first five measures of the piece. It is written for piano in a 9/16 time signature with a key signature of two flats (B-flat and E-flat). The music is marked 'mf' (mezzo-forte). The right hand features a melodic line with eighth and sixteenth notes, while the left hand provides a harmonic accompaniment with chords and single notes.

6

p

Detailed description: This system contains measures 6 through 11. The right hand continues the melodic development with some grace notes. The left hand accompaniment remains consistent. The dynamic marking changes to 'p' (piano) starting at measure 8.

12

mf

Detailed description: This system contains measures 12 through 17. The melodic line in the right hand becomes more active with sixteenth-note passages. The dynamic marking returns to 'mf' at measure 14.

18

p

Detailed description: This system contains measures 18 through 23. The right hand features a prominent sixteenth-note run. The dynamic marking changes to 'p' (piano) at measure 19.

24

mf

Detailed description: This system contains measures 24 through 29. The piece concludes with a final melodic flourish in the right hand and a descending bass line in the left hand. The dynamic marking is 'mf'.

29

*p*

This system contains measures 29 through 34. The music is in a minor key, indicated by two flats in the key signature. The melody in the treble clef consists of eighth and quarter notes, with a fermata over the final note of measure 34. The bass line features a steady eighth-note accompaniment. A dynamic marking of *p* (piano) is placed in the right hand of measure 34.

35

*mf* *p*

This system contains measures 35 through 40. The melody continues with eighth and quarter notes. The bass line maintains the eighth-note accompaniment. Dynamic markings include *mf* (mezzo-forte) in the right hand of measure 36 and *p* (piano) in the right hand of measure 38.

41

*mf*

This system contains measures 41 through 44. The melody is characterized by a series of eighth-note runs. The bass line continues with the eighth-note accompaniment. A dynamic marking of *mf* (mezzo-forte) is present in the right hand of measure 41.

45

*p*

This system contains measures 45 through 49. The melody features a mix of quarter and eighth notes. The bass line continues with the eighth-note accompaniment. A dynamic marking of *p* (piano) is placed in the right hand of measure 45.

50

*mf*

This system contains measures 50 through 54. The melody includes a fermata over the first note of measure 50 and another over the first note of measure 52. The bass line continues with the eighth-note accompaniment. A dynamic marking of *mf* (mezzo-forte) is placed in the right hand of measure 51.

55

*p*

60

*mp*

65

70

*p*

76

*An & An*