



Bernard Dewagtere

France, SIN LE NOBLE

Prelude No 4 in E minor (op. 28) - Largo (Suffocation) Chopin, Frédéric

About the artist

Doctor in musicology, conductor and composer.

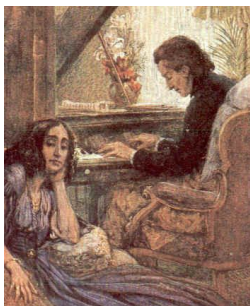
Compositions and arrangements from all eras, in all styles or musical genres and for any instrument or vocal training.

Qualification: PhD Musicology

Associate: SACEM - IPI code of the artist : 342990

Artist page : <https://www.free-scores.com/Download-PDF-Sheet-Music-bernard-dewagtere.htm>

About the piece



Title: Prelude No 4 in E minor (op. 28) - Largo [Suffocation]

Composer: Chopin, Frédéric

Arranger: Dewagtere, Bernard

Copyright: Copyright © Dewagtere, Bernard

Instrumentation: Trombone or tuba or euphonium

Style: Romantic

Comment: Chopin wrote the Op. 28 preludes between 1835 and 1839, partly at Valldemossa, Majorca, where the composer spent the winter of 1838-39 and where he had fled with George Sand and her children to escape the damp Paris weather. Prelude No. 4 "Suffocation" is one of the most famous pieces Chopin wrote. It was played at his funeral, with a slow melody in the right hand and repeated block chords in the left hand (Source : Wikipedia)

Bernard Dewagtere on [free-scores.com](https://www.free-scores.com)

LICENSE

This sheet music requires an authorization
- for public performances
- for use by teachers

Buy this license at :

<https://www.free-scores.com/licence-partition-uk.php?partition=40244>



- listen to the audio
- share your interpretation
- comment
- pay the licence
- contact the artist

Prohibited distribution on other website.

Prelude No 4 in E minor (op. 28) - Largo

Suffocation

F. Chopin (1839)

Transc. : Bernard Dewagtere

Largo *legato*

Trombone
or Tuba
or Euphonium

mf *espress.*

A m/C D m/B B dim 9fr.

Piano

mp *legato*

3

D^bm/B^b 4fr. G m/B^b 3fr. A 7/B^b A7 A m7 D 7/A F/A B dim/A 9fr.

Pno

6

G[#]dim 6fr. G m7 E dim/G 2fr.

Pno

9

FM7 D m/F F 8fr. D m7/E E7 D m7/E E7 D m7/E

Pno

12

E7 A m/C D m/B D b m/B b 4fr.

Pno

15

G m/B b 3fr. A7 D7/A D # m/F # D m/F E9 E/C A m/C 7fr.

Pno

Red.



18

dim. *mf*

D m/B E D m/F E D m/F A m/E E E7

3 *mp*

Pno

pp *

21

dim.

F/A A dim D m7/A B dim/E A/E A m/E A dim/E^b

8fr. 7fr. 9fr. 5fr. 7fr.

dim.

Pno

24

p *smorz.*

A m/E E A m

7fr.

pp *smorz.*

Pno