



Bernard Dewagtere

France, SIN LE NOBLE

L'Arlésienne (Suite n°1) – 4. Carillon Bizet, Georges

About the artist

Doctor in musicology, conductor and composer.

Compositions and arrangements from all eras, in all styles or musical genres and for any instrument or vocal training.

Qualification: PhD Musicology

Associate: SACEM - IPI code of the artist : 342990

Artist page : <https://www.free-scores.com/Download-PDF-Sheet-Music-bernard-dewagtere.htm>

About the piece



Title: L'Arlésienne (Suite n°1) – 4. Carillon

Composer: Bizet, Georges

Arranger: Dewagtere, Bernard

Copyright: Public Domain

Publisher: Dewagtere, Bernard

Instrumentation: Cello solo

Style: Romantic

Bernard Dewagtere on [free-scores.com](https://www.free-scores.com)

LICENSE

This sheet music requires an authorization
- for public performances
- for use by teachers

Buy this license at :

<https://www.free-scores.com//license?p=aUyopB7be0>



- listen to the audio
- share your interpretation
- comment
- pay the licence
- contact the artist

Prohibited distribution on other website.

L'Arlésienne (Suite n°1)

4. Carillon

Georges Bizet (1872)

Transc. : Bernard Dewagtere

Allegro moderato

Violoncelle

Measures 1-7: Bass clef, key signature of three sharps (F#, C#, G#), 3/4 time signature. Measure 1 starts with a forte (*f*) dynamic and a triplet of eighth notes. The piece features a mix of eighth and sixteenth notes with various triplet markings.

Measures 8-14: Continuation of the piece with triplet markings and eighth notes. Measure 8 begins with a repeat sign.

Measures 15-22: Continuation of the piece with triplet markings and eighth notes.

Measures 23-30: Continuation of the piece with triplet markings and eighth notes.

Measures 31-38: Continuation of the piece with triplet markings and eighth notes.

Measures 39-46: Continuation of the piece with triplet markings and eighth notes. Measure 46 ends with a piano (*pp*) dynamic marking.

Andantino

Measures 47-53: Change to 6/8 time signature. Measure 47 starts with a piano (*p*) dynamic. The tempo is slower, featuring eighth notes with slurs.

Measures 54-60: Continuation of the Andantino section with eighth notes and slurs.

Measures 61-66: Continuation of the Andantino section with eighth notes and slurs.

L'Arlésienne (Suite n°1)

2
68



75



83

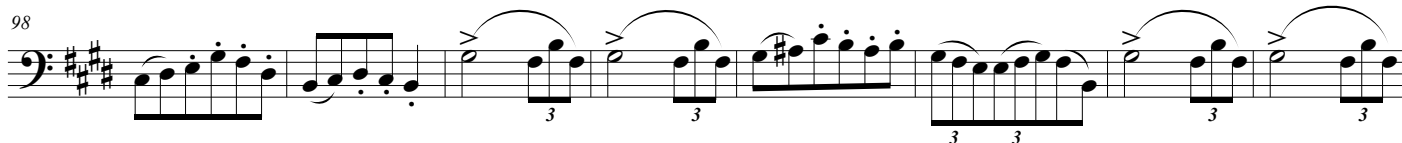


1° Tempo

90



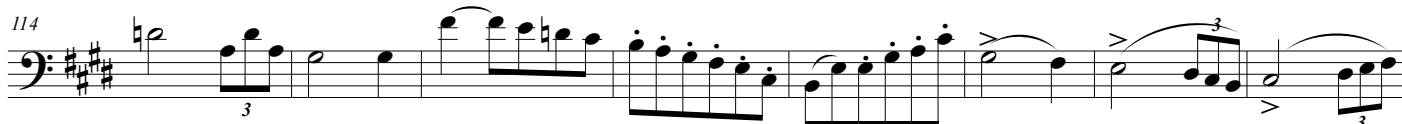
98



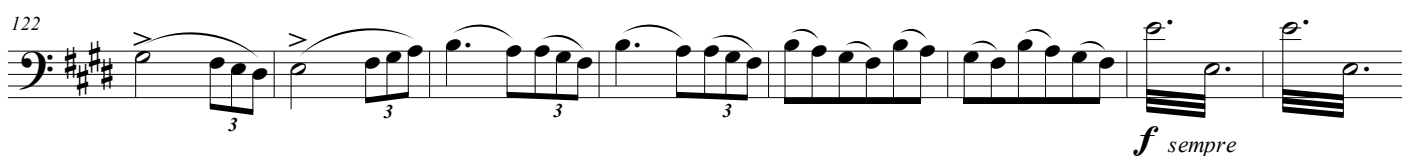
106



114



122



130



cre - - scen - - do

ff

ff