



Bernard Dewagtere

France, SIN LE NOBLE

German dance in C, No 1 (N°1) Beethoven, Ludwig van

About the artist

Doctor in musicology, conductor and composer.

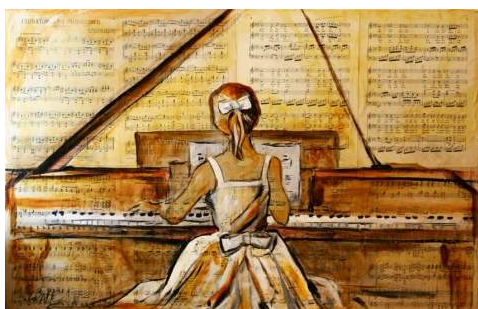
Compositions and arrangements from all eras, in all styles or musical genres and for any instrument or vocal training.

Qualification: PhD Musicology

Associate: SACEM - IPI code of the artist : 342990

Artist page : <https://www.free-scores.com/Download-PDF-Sheet-Music-bernard-dewagtere.htm>

About the piece



Title: German dance in C, No 1 [N°1]
Composer: Beethoven, Ludwig van
Arranger: Dewagtere, Bernard
Copyright: Copyright © Bernard Dewagtere
Publisher: Dewagtere, Bernard
Instrumentation: Harp
Style: Romantic

Bernard Dewagtere on [free-scores.com](https://www.free-scores.com)

LICENSE

This sheet music requires an authorization
- for public performances
- for use by teachers

Buy this license at :

<https://www.free-scores.com//license?p=aN7HgK7Vbl>



- listen to the audio
- share your interpretation
- comment
- pay the licence
- contact the artist

Prohibited distribution on other website.

Deutscher Tanz in C-Dur

No 1

L. van Beethoven (1770 – 1827)

Transc. : Bernard Dewagtere

Allegro ♩ = 120

Harp

Measures 1-4 of the piece. The music is in 3/4 time and C major. The first measure starts with a forte (*f*) dynamic. The melody in the right hand features eighth-note patterns and slurs, while the left hand provides a steady accompaniment of eighth notes. Accents are placed over the first and third notes of the first measure.

5

Measures 5-8. Measure 5 continues the melodic line. Measures 6-7 show a first ending (1.) leading to a second ending (2.). The second ending concludes with a piano (*p*) dynamic. The left hand accompaniment remains consistent.

10

Measures 9-14. Measure 9 begins with a repeat sign. Measure 10 includes a *cresc.* (crescendo) marking. Measure 11 features a mezzo-forte (*mf*) dynamic. The right hand continues with eighth-note patterns, and the left hand has some rests.

15

Measures 15-18. Measure 15 starts with a forte (*f*) dynamic. Measure 16 continues with a piano (*p*) dynamic. The piece concludes with a first ending (1.) and a second ending (2.) in the final measure.