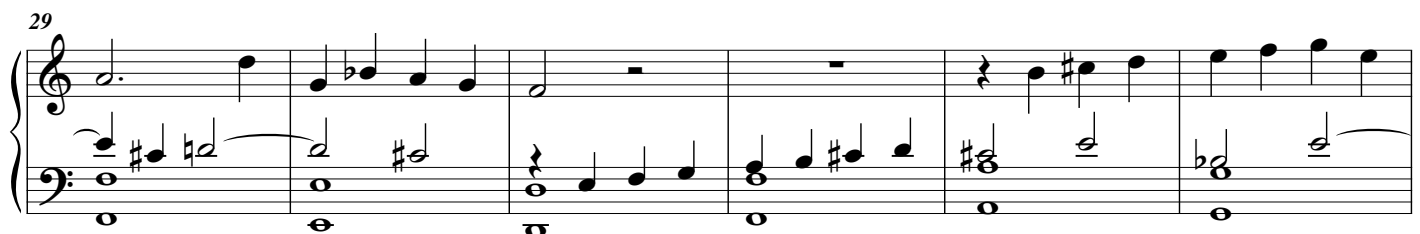
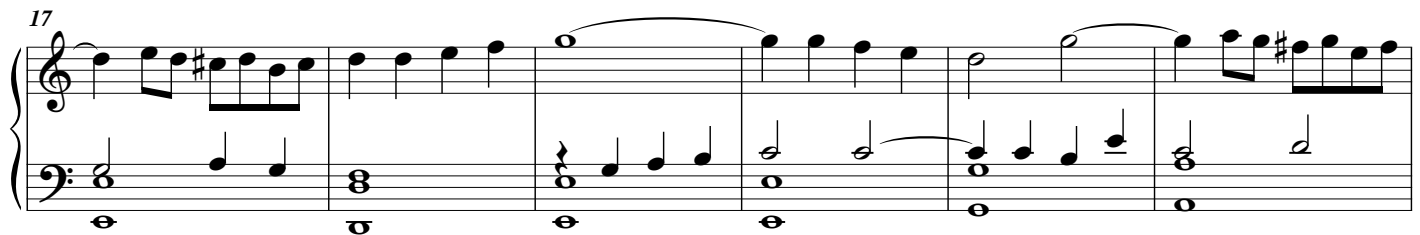
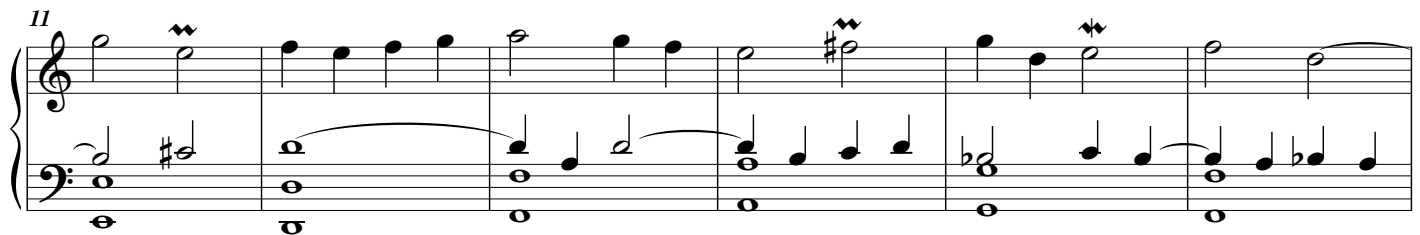
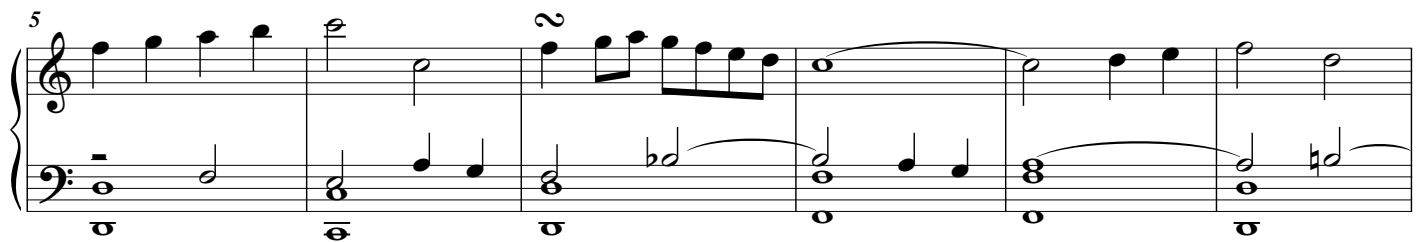
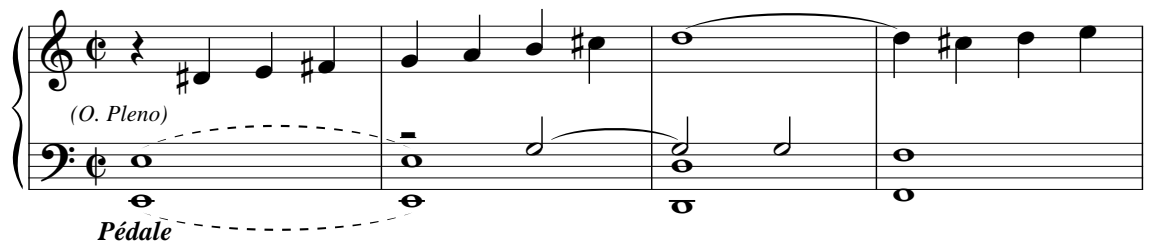
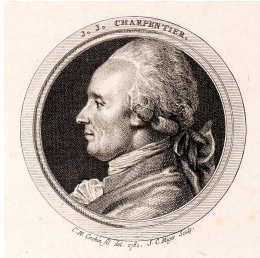


Himne pour la Dédicace de l'Église

À 4 parties pour les 1. et 2. Vespres

edited by
Maurizio Machella

Jean-Jacques
Beauvarlet-Charpentier
(1734-1794)



35

35

41

41

46

46

51

51

57

57

Fugue 1 Vivace

1 Vivace

9

9

15

15

21

System 1 (Measures 21-26): Treble clef contains eighth and quarter notes with some accidentals. Bass clef contains half notes and quarter notes, including a sharp sign.

27

System 2 (Measures 27-32): Treble clef features a half note with a sharp, followed by quarter notes. Bass clef contains eighth notes and quarter notes.

33

System 3 (Measures 33-38): Treble clef has half notes and quarter notes. Bass clef contains half notes and quarter notes, including a sharp sign.

39

System 4 (Measures 39-44): Treble clef contains eighth and quarter notes. Bass clef features half notes and quarter notes, including a sharp sign.

45

System 5 (Measures 45-50): Treble clef has half notes and quarter notes. Bass clef contains half notes and quarter notes, including a sharp sign.

51

System 6 (Measures 51-56): Treble clef contains eighth and quarter notes. Bass clef has half notes and quarter notes, including a sharp sign.

57

System 7 (Measures 57-62): Treble clef features eighth and quarter notes. Bass clef contains half notes and quarter notes, including a sharp sign.

63

System 8 (Measures 63-68): Treble clef has half notes and quarter notes. Bass clef contains half notes and quarter notes, including a sharp sign.

69

76

83

Péd.

(sic!)

Péd.

1

Petit plein jeu

5

tr

(sic!)

