



avelan ntsiete

France, Fleury les Aubrais

HOLY Anonymous

About the artist

Born of parents practising music, Avelan grow up in this bath and made it is profession. Through this, he shares some of is arrangements hoping that they will be helpful.

Artist page : <https://www.free-scores.com/Download-PDF-Sheet-Music-avents.htm>

About the piece



Title: HOLY
Composer: Anonymous
Arranger: ntsiete, avelan
Copyright: Copyright © avelan ntsiete
Publisher: ntsiete, avelan
Instrumentation: Choir
Style: Religious - Sacred

avelan ntsiete on [free-scores.com](https://www.free-scores.com)

Prohibited distribution on other website.



- listen to the audio
- share your interpretation
- comment
- contact the artist

MOSANTU

Trsc.& Harm : Avelan NTSIETE

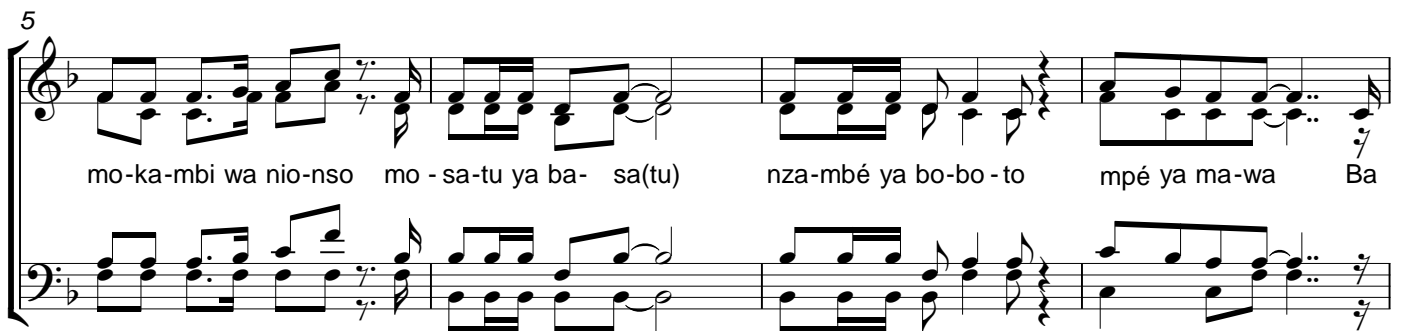
SOPRANO
ALTO



1. E - ja - li na mo - sa - tu na ka - ti ya ba - sa - tu Nza - mbé mo - ko - nji ya ma - pi - nga yé ndé

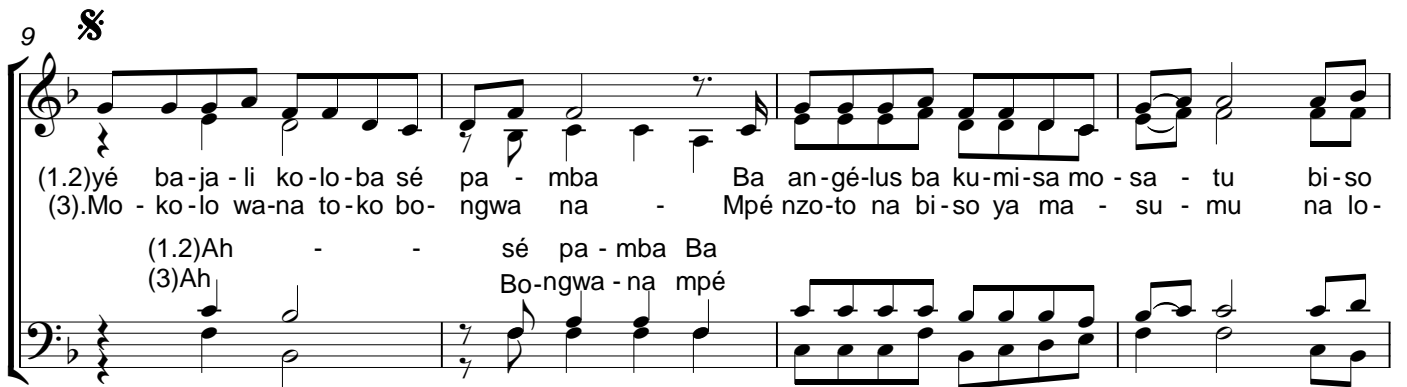
TENOR
BASS

5



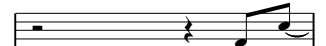
mo - ka - mbi wa nio - nso mo - sa - tu ya ba - sa (tu) nza - mbé ya bo - bo - to mpé ya ma - wa Ba

9



(1.2) yé ba - ja - li ko - lo - ba sé pa - mba Ba an - gé - lus ba ku - mi - sa mo - sa - tu bi - so
(3) Mo - ko - lo wa - na to - ko bo - ngwa na - Mpé nzo - to na bi - so ya ma - su - mu na lo -
(1.2) Ah - - sé pa - mba Ba
(3) Ah Bo - ngwa - na mpé

(One)



Mo - sa -



mpé a - wa - na nsé A - yo - ké - la - ki bi - so ma wa' e - lo - ngo bo - ngo bo - ya to - sa - njo - la yé
lé - ngé na - ya - ngo e - ko za - la li - su - su té toko sa - nga - na - ba an gé - lu na nza - mbé

CHORUS

17

ntu — mo - sa - ntu

Mo - ko-nji ya ba-ko-nji yo — ndé mo-bi - ki-si Nja-mbé yo mo - né-né mo-ko-lo bwa

B: Mo - ko - nji ya ba-ko - nji mo - bi - ki - si

20

Ku - mi — sa - ma — Sa - njo - la - ma

mpi - nga — mo - ko-nji na ba ko-nji Sa- njo-la- ma li - bé-la mo-

23 Na mpi-nga mo - ko - nji Sa - njo-la - ma li - bé - la

23

Fine

ko té ak - ko-ka-ni na yo — Li - ko-lo na Nsé

2. Na ma-ko-ki na-yé ma - ka-mbo nio-nso E-
3. Na ma-pa-ngo na yé Yeho-va mo-sa-ntu A-

27

ko - mi ma - ka - si éza na ngu - ya bi - ké - la - mu nio-nso'e-wu - mé-la - ka mpo
bongi-sé - li bi - so bilo ko'ya ti - na na yé - bi é - té mo - ko - lo mo - ko to -

30

D.S. al Fine

na ngo - lu na(yé) A - za na ma - ka - si yé ndé nza-mbé Ba -
ko fa - nda mpé to - ko ka - bo - la élo - ngo na yé Na