



Alexandre Pappas

Greece, athenes

MEDIEVAL AMUSMENT

About the artist

Alexandros Pappas is a classically trained composer based in Athens, Greece. He holds a Bachelor degree of arts in music composition; he studied Composition and harmony with Prof. Nestor Taylor and many other respected teachers. He has composed several orchestral pieces for audiovisual productions and music to accompany poetic collections. In 2007 he received the 2nd prize in the UNESCO composition challenge (Greece) and in 2008, 2009, 2010, & 2011, he was awarded with several prizes in the international Fundulis Composition Contest in Bolos-Greece. His collaborations include a world premiere performance by the Sphere Ensemble, in Brazil, as well as performances by the Nigun Quartet in Calabria, Italy. He has released several CD s with his works on AMAZON, and selections of his music may be heard also on SOUNDCLLOUD.(mymusicworld)

Qualification: AUTODIDACTE
BACHELOR OF ARTS IN MUSIC-COMPOSITION/IAA/

Artist page : <https://www.free-scores.com/Download-PDF-Sheet-Music-alexandre-pappas.htm>

About the piece



Title: MEDIEVAL AMUSMENT
Composer: Pappas, Alexandre
Arranger: Pappas, Alexandre
Copyright: Alexandre Pappas © All rights reserved
Instrumentation: Oboe and Cello
Style: Renaissance
Comment: smal compo.for oboe and cello,vivace tempo,easy also for students duo.

Alexandre Pappas on [free-scores.com](https://www.free-scores.com)



- listen to the audio
- share your interpretation
- comment
- contact the artist

MEDIEVAL AMUSMENT

Score

oboe-cello/VIVACE/160

ALEX PAPPAS/OPUS103-8/3/12

[Arranger]

$\text{♩} = 160$

Oboe

Solo Cello

Detailed description: This system contains the first five measures of the score. The Oboe part is written in a treble clef with a common time signature (C). The Solo Cello part is written in a bass clef with a common time signature (C). The music begins with a whole note G4 in the Oboe and a whole note G2 in the Cello. The melody in the Oboe consists of eighth and quarter notes, while the Cello provides a harmonic accompaniment with chords and single notes.

Ob.

S.Vlc.

Detailed description: This system contains measures 6 through 10. The Oboe part continues with a melodic line, including a trill (tr) in measure 8. The Solo Cello part provides a steady accompaniment with chords and single notes.

Ob.

S.Vlc.

Detailed description: This system contains measures 11 through 15. The Oboe part features a trill (tr) in measure 14. The Solo Cello part continues with its accompaniment.

Ob.

S.Vlc.

Detailed description: This system contains measures 16 through 20. The Oboe part concludes with a melodic phrase. The Solo Cello part provides a final accompaniment.

MEDIEVAL AMUSMENT

2

Ob. ²¹ *tr*

S.Vlc. ²¹ *tr*

Ob. ²⁶

S.Vlc. ²⁶

Ob. ³¹

S.Vlc. ³¹

Ob. ³⁶ *tr*

S.Vlc. ³⁶

Ob. ⁴¹ *tr*

S.Vlc. ⁴¹

MEDIEVAL AMUSMENT

46

Ob.

S.Vlc.

51

Ob.

S.Vlc.

56

Ob.

S.Vlc.

61

Ob.

S.Vlc.

66

Ob.

S.Vlc.

MEDIEVAL AMUSMENT

4

72

Ob.

S.Vlc.

77

Ob.

S.Vlc.

82

Ob.

S.Vlc.

87

Ob.

S.Vlc.

$\text{♩} = 160$

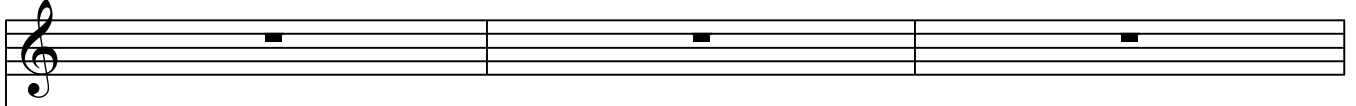
93

Ob.


S.Vlc.

MEDIEVAL AMUSMENT

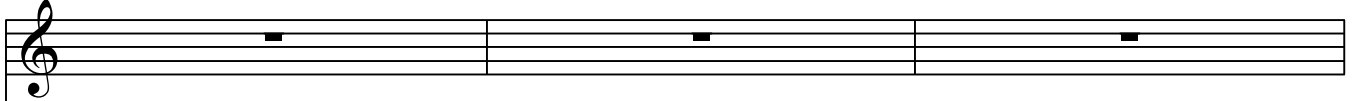
97

Ob. 


97

S.Vlc. 

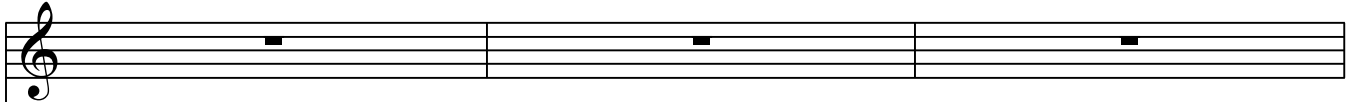
100

Ob. 


100

S.Vlc. 

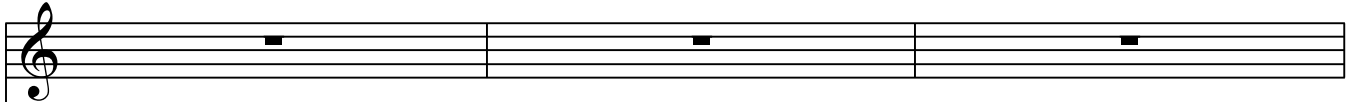
103

Ob. 


103

S.Vlc. 

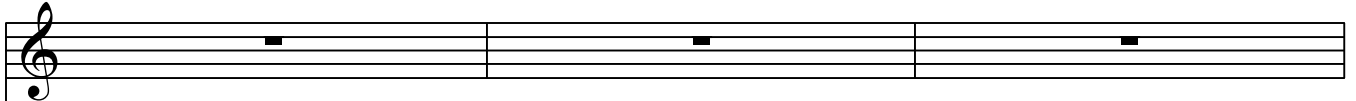
106

Ob. 


106

S.Vlc. 

109

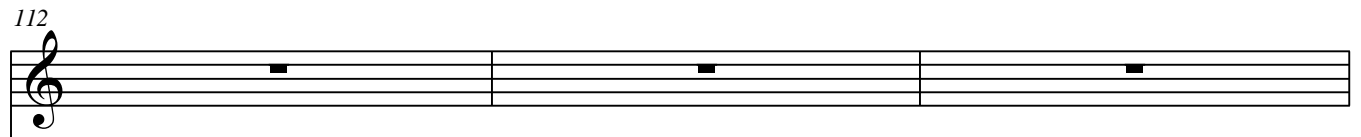
Ob. 

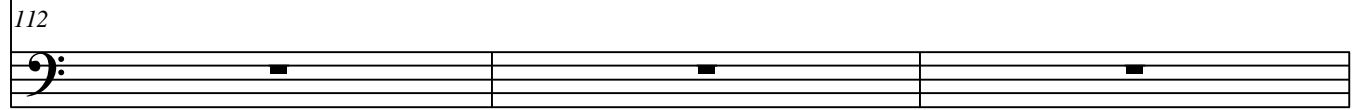
109

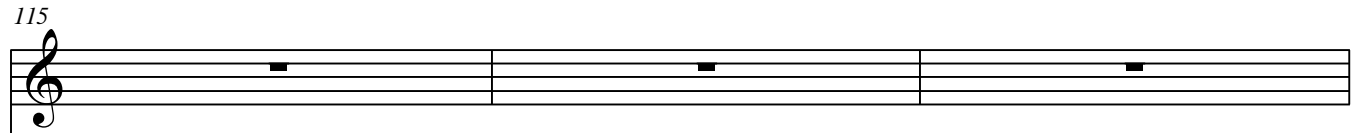
S.Vlc. 

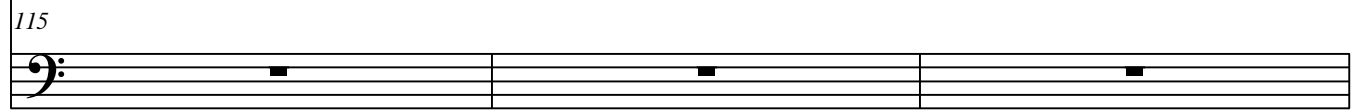
MEDIEVAL AMUSMENT

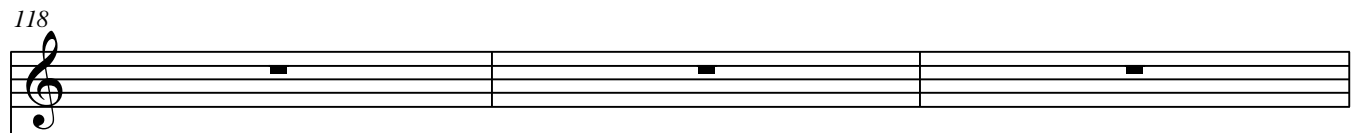
6

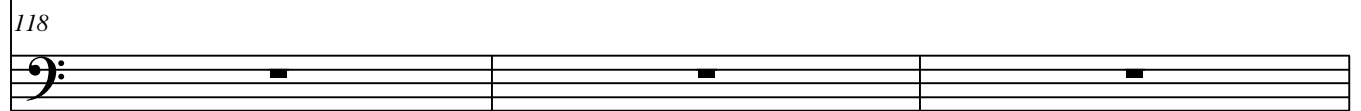
112
Ob. 

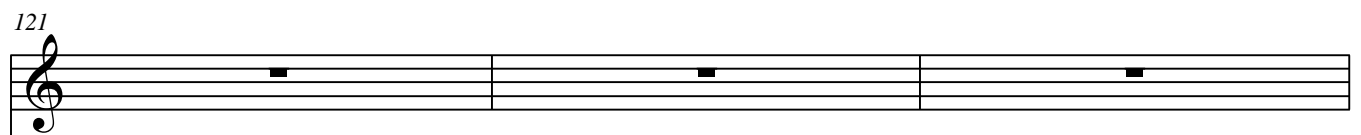
112
S.Vlc. 


115
Ob. 

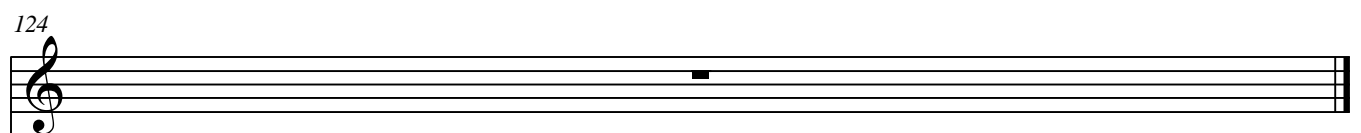
115
S.Vlc. 

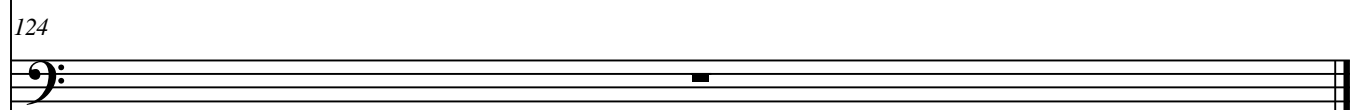
118
Ob. 

118
S.Vlc. 

121
Ob. 

121
S.Vlc. 

124
Ob. 

124
S.Vlc. 

MEDIEVAL AMUSMENT

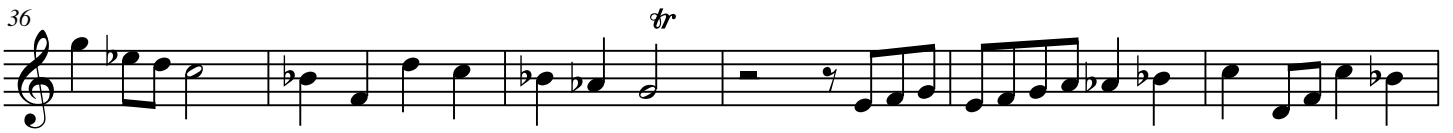
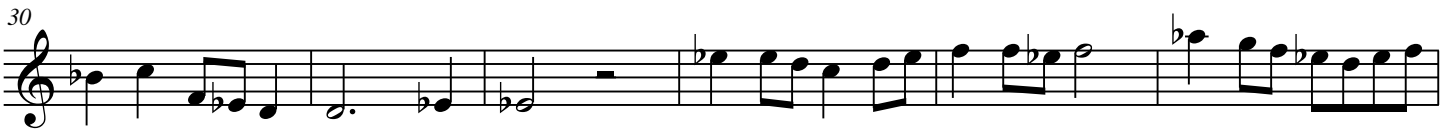
Oboe

oboe-cello/VIVACE/160

ALEX PAPPAS/OPUS103-8/3/12

[Arranger]

♩ = 160



MEDIEVAL AMUSMENT

2

48



53



59



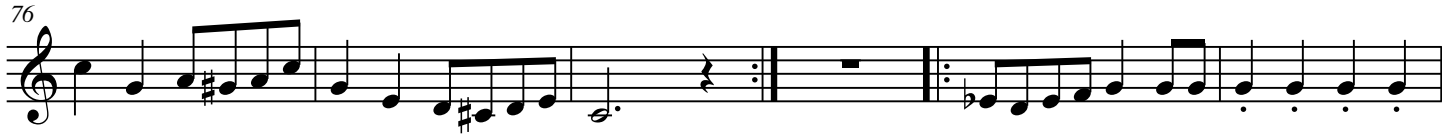
64



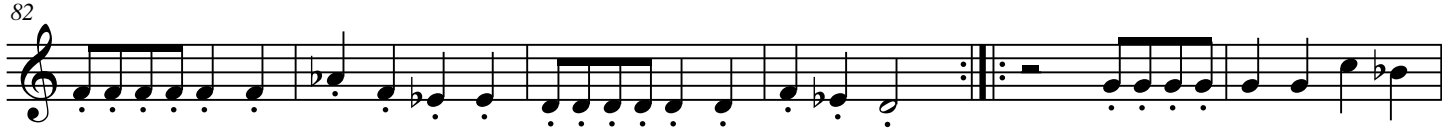
70



76



82



88



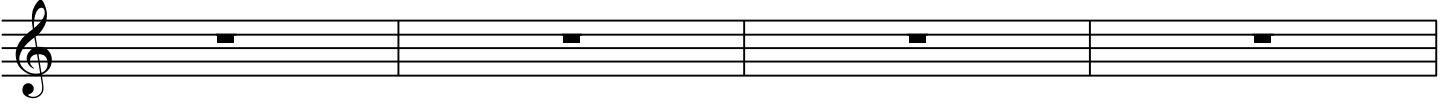
MEDIEVAL AMUSMENT

$\text{♩} = 160$

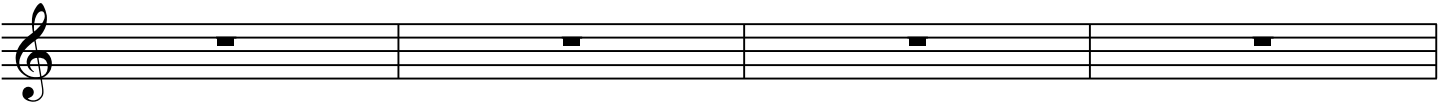
94



98



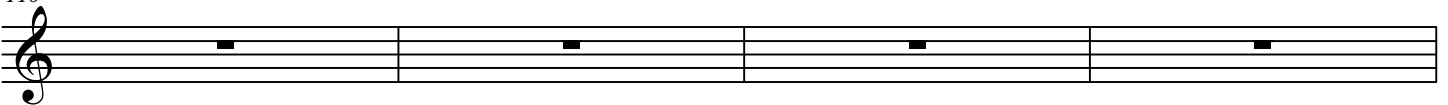
102



106



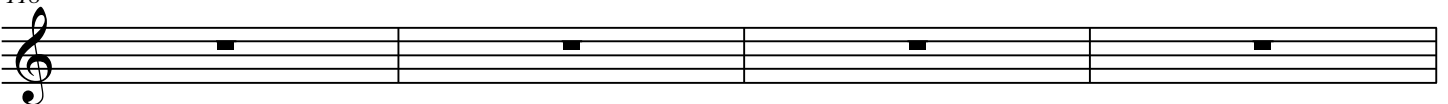
110



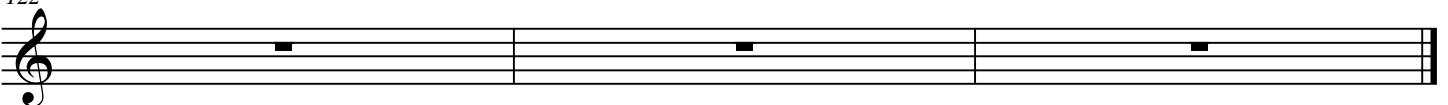
114



118



122



MEDIEVAL AMUSMENT

2

55

62

69

75

81

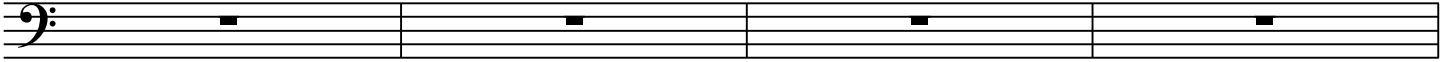
87

♩ = 160

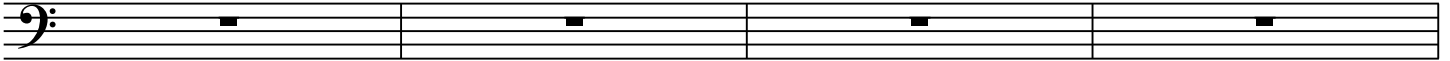
94

98

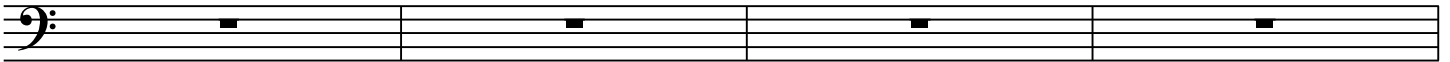
102



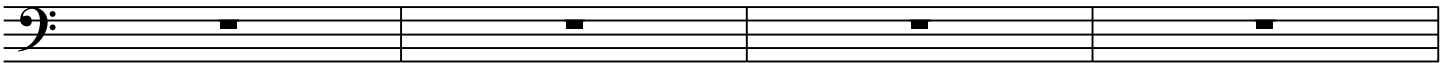
106



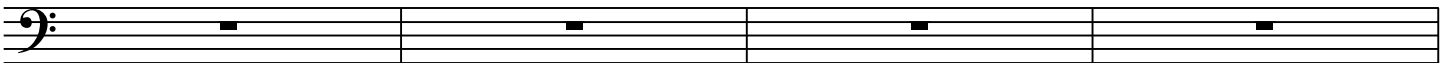
110



114



118



122

