

Euphonium

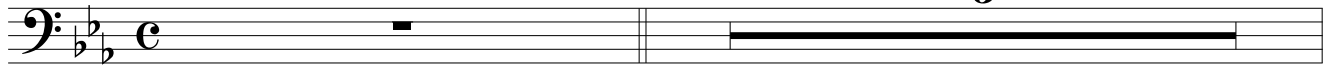
YET ANOTHER VISION

For Euphonium & Piano

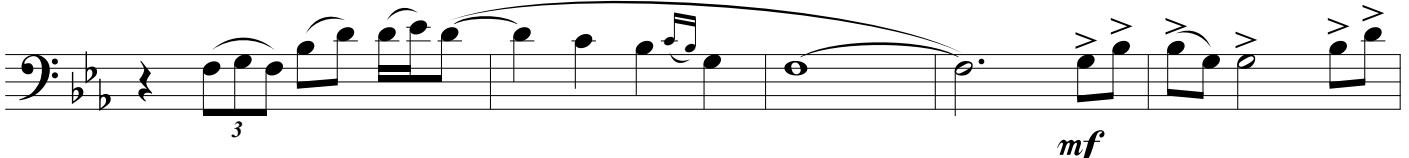
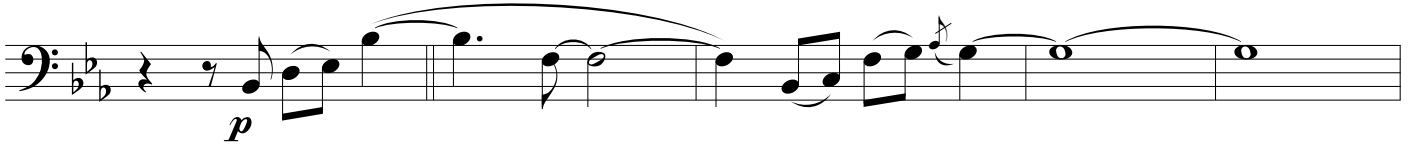
by ILIO VOLANTE

$\text{♩} = 80$

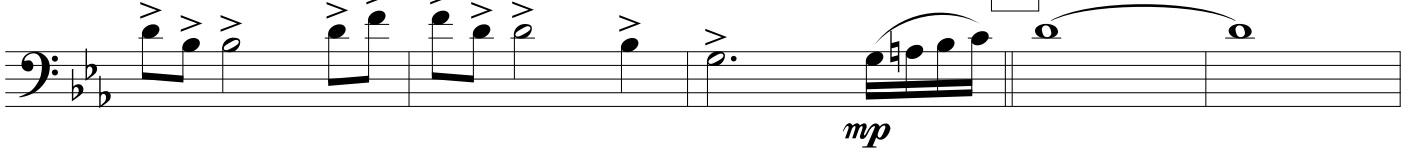
3



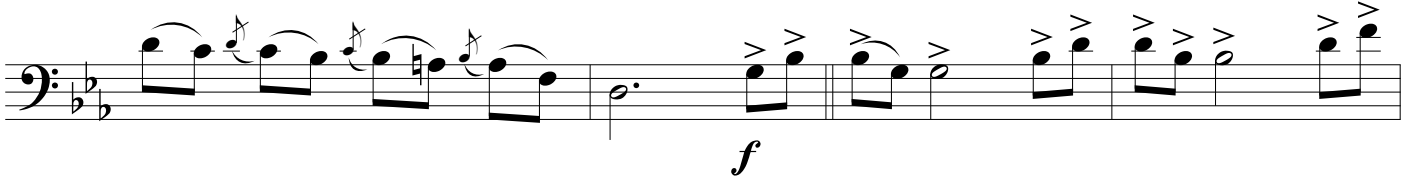
A



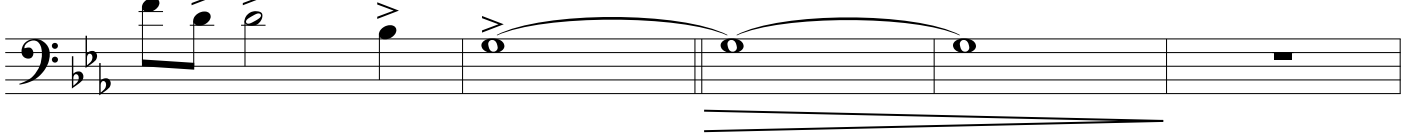
B



C



D



YET ANOTHER VISION - Ilio Volante - EUPHONIUM

First musical staff in bass clef, key signature of two flats, starting with a piano (*p*) dynamic. It features a melodic line with a long slur and a repeat sign.

Second musical staff in bass clef, continuing the melodic line with a triplet of eighth notes.

Third musical staff in bass clef, featuring a triplet of eighth notes and a *rall.* (rallentando) marking.

Fourth musical staff in bass clef, starting with a tempo marking of ♩ = 140 and a dynamic of *mf*. It includes a triplet of eighth notes and a boxed letter 'E' above the staff.

Fifth musical staff in bass clef, featuring a triplet of eighth notes and a triplet of sixteenth notes.

Sixth musical staff in bass clef, featuring a triplet of sixteenth notes and a triplet of eighth notes.

Seventh musical staff in bass clef, featuring a triplet of eighth notes and a triplet of sixteenth notes.

Eighth musical staff in bass clef, featuring a dynamic of *mp* and a triplet of eighth notes.

Ninth musical staff in bass clef, featuring a triplet of eighth notes and a triplet of sixteenth notes.

YET ANOTHER VISION - Ilio Volante - EUPHONIUM

p

3

3

3

3

F

f

pV

G

3

mf

H

pp

ff

sfz

Copyright © 2015 by Ilio Volante - All Rights Reserved