

# WALTZ OF THE LEAVES

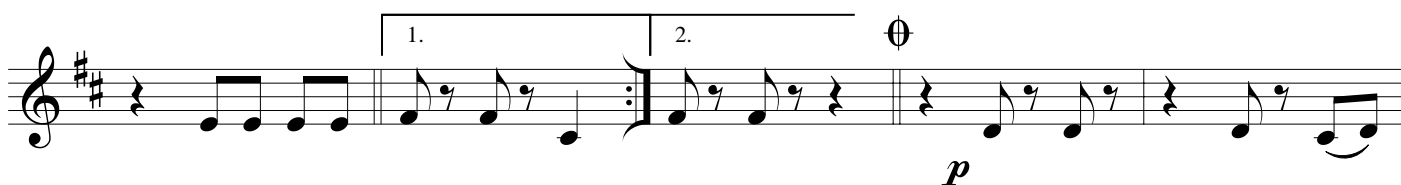
- VALZER DELLE FOGLIE -

Horn in Eb 3

♩ = 130

A

by ILIO VOLANTE



C



D



E



WALTZ OF THE LEAVES - Ilio Volante - HORN in Eb 3

F

Musical notation for section F, measures 1-4. The first staff shows a melodic line starting with a half note G4, followed by quarter notes A4, B4, C5, and D5. The second staff shows a rhythmic accompaniment of eighth notes. Dynamics include *f* and *mp*.

G

Musical notation for section G, measures 5-8. The first staff continues the melodic line with quarter notes E5, F5, G5, and A5. The second staff continues the rhythmic accompaniment.

H

Musical notation for section H, measures 9-12. The first staff shows a repeat sign followed by a key signature change to two sharps (F# and C#). The second staff continues the rhythmic accompaniment.

Musical notation for section H, measures 13-16. The first staff continues the melodic line with quarter notes B4, C5, D5, and E5. The second staff continues the rhythmic accompaniment.

Musical notation for section H, measures 17-20. The first staff continues the melodic line with quarter notes F5, G5, A5, and B5. The second staff continues the rhythmic accompaniment.

I

Musical notation for section I, measures 21-24. The first staff continues the melodic line with quarter notes C6, B5, A5, and G5. The second staff continues the rhythmic accompaniment.

Musical notation for section I, measures 25-28. The first staff continues the melodic line with quarter notes F5, E5, D5, and C5. The second staff continues the rhythmic accompaniment.

J

Musical notation for section J, measures 29-32. The first staff continues the melodic line with quarter notes B4, A4, G4, and F4. The second staff continues the rhythmic accompaniment. The section concludes with a key signature change to one sharp (F#) and a Coda symbol.

D.S. al Coda Coda