

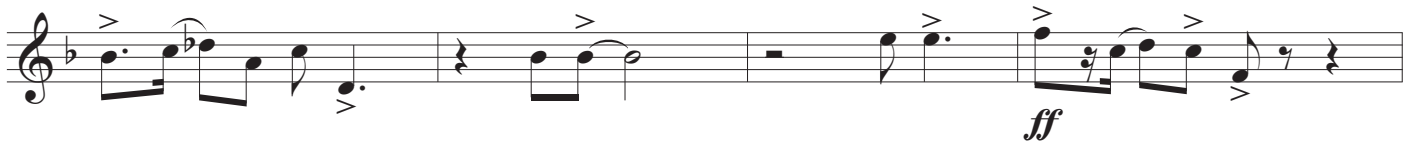
VIER VAN TWEE

Quartet for French Horn 1° & 2°, Tenor Sax & Baritone Sax

Tenor Sax

♩ = 140

by ILIO VOLANTE



A



B



C



VIER VAN TWEE - Ilio Volante - TENOR SAX

D

Musical notation for section D, measures 1-6. The key signature has one flat (B-flat). Measure 1 starts with a quarter note B-flat, followed by a quarter note A, and a triplet of eighth notes G, F, E. Measure 2 has a quarter note D, a quarter note C, and a quarter note B. Measure 3 has a quarter note A, a quarter note G, and a quarter note F. Measure 4 has a quarter note E, a quarter note D, and a quarter note C. Measure 5 has a quarter note B, a quarter note A, and a quarter note G. Measure 6 has a quarter note F, a quarter note E, and a quarter note D.

E

Musical notation for section E, measures 7-10. Measure 7 starts with a quarter note B-flat, followed by a quarter note A, and a triplet of eighth notes G, F, E. Measure 8 has a quarter note D, a quarter note C, and a quarter note B. Measure 9 has a quarter note A, a quarter note G, and a quarter note F. Measure 10 has a quarter note E, a quarter note D, and a quarter note C.

F

Musical notation for section F, measures 11-14. Measure 11 starts with a quarter note B-flat, followed by a quarter note A, and a triplet of eighth notes G, F, E. Measure 12 has a quarter note D, a quarter note C, and a quarter note B. Measure 13 has a quarter note A, a quarter note G, and a quarter note F. Measure 14 has a quarter note E, a quarter note D, and a quarter note C.

$\text{♩} = 140$

Musical notation for section F, measures 15-18. Measure 15 starts with a quarter note B-flat, followed by a quarter note A, and a triplet of eighth notes G, F, E. Measure 16 has a quarter note D, a quarter note C, and a quarter note B. Measure 17 has a quarter note A, a quarter note G, and a quarter note F. Measure 18 has a quarter note E, a quarter note D, and a quarter note C.

G

Musical notation for section G, measures 19-22. Measure 19 starts with a quarter note B-flat, followed by a quarter note A, and a triplet of eighth notes G, F, E. Measure 20 has a quarter note D, a quarter note C, and a quarter note B. Measure 21 has a quarter note A, a quarter note G, and a quarter note F. Measure 22 has a quarter note E, a quarter note D, and a quarter note C.

H

Musical notation for section H, measures 23-26. Measure 23 starts with a quarter note B-flat, followed by a quarter note A, and a triplet of eighth notes G, F, E. Measure 24 has a quarter note D, a quarter note C, and a quarter note B. Measure 25 has a quarter note A, a quarter note G, and a quarter note F. Measure 26 has a quarter note E, a quarter note D, and a quarter note C.