

Oboe

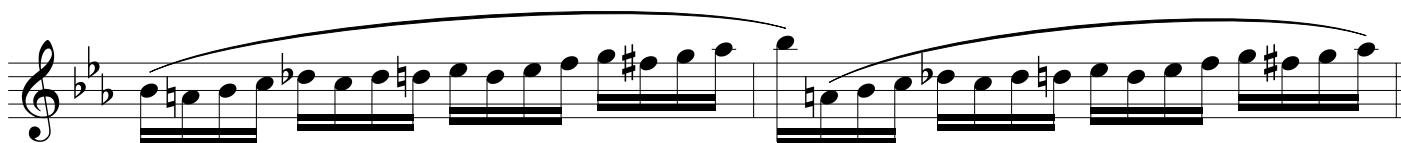
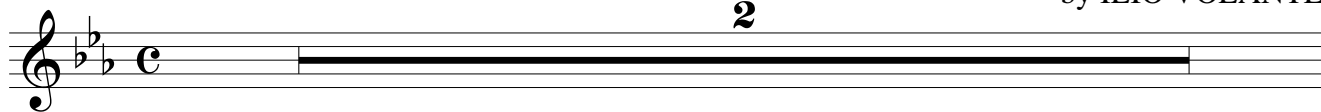
VALLIS ROTUNDAE

Italian Style Marcia Sinfonica

♩ = 100

by ILIO VOLANTE

2



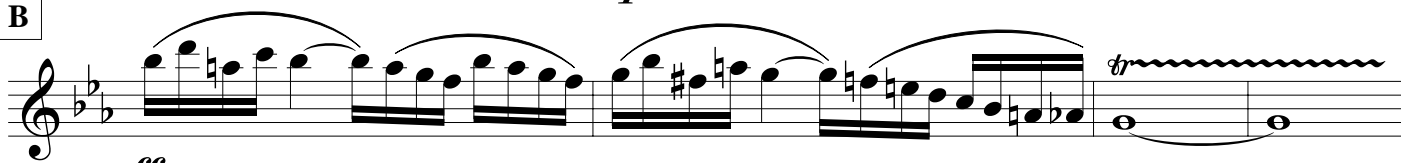
A

f



B

p



ff

C



mp

D

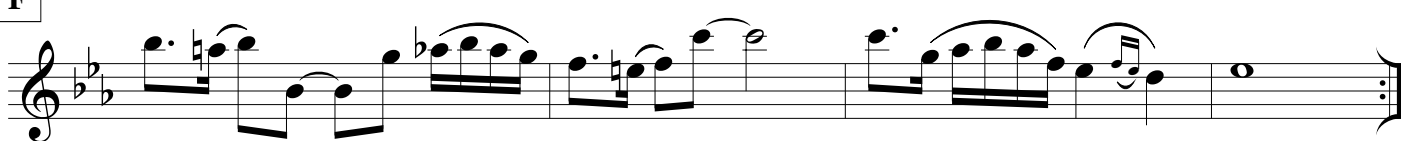


E

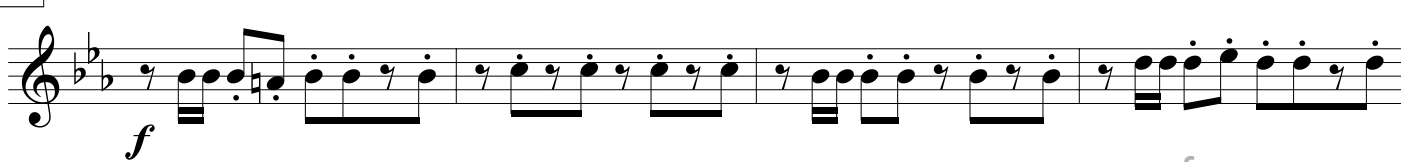


mf

F



G



f

VALLIS ROTUNDAE - Illo Volante - OBOE



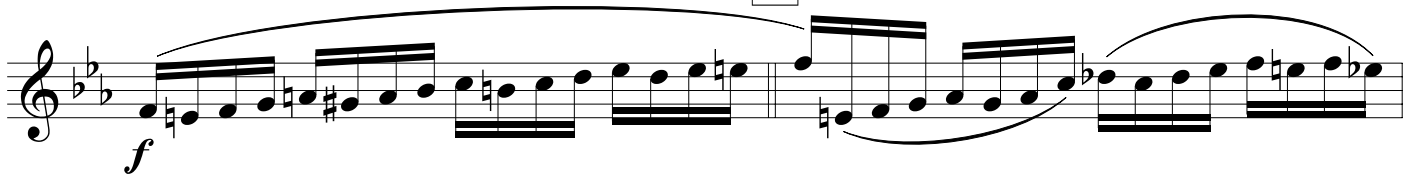
H



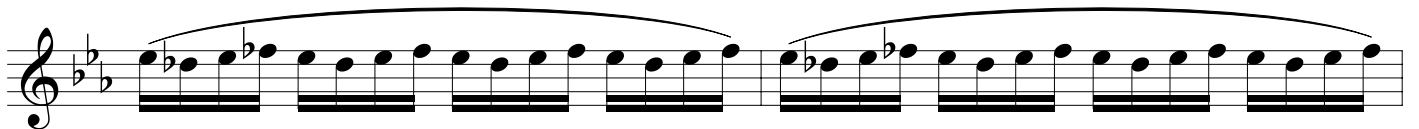
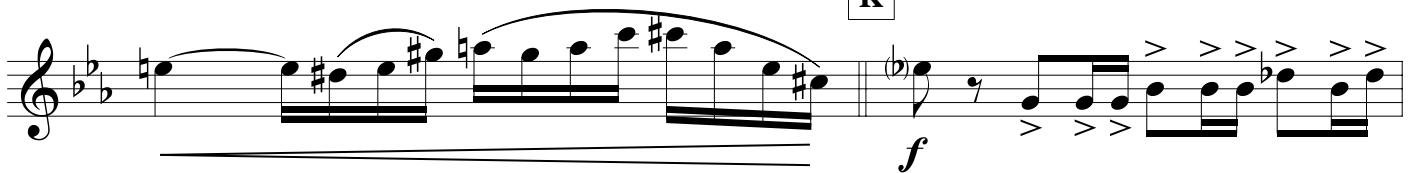
I



J



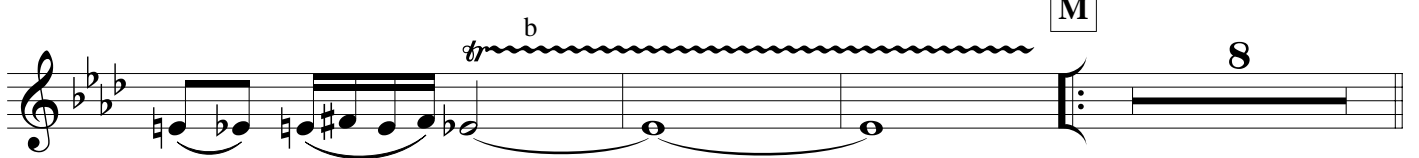
K



L



M



VALLIS ROTUNDAE - Ilio Volante - OBOE

N

First line of musical notation for section N, starting with a treble clef and a key signature of three flats. The music features a series of eighth notes with slurs and ties. A dynamic marking of *p* is placed below the first measure. The line ends with a fermata over a dotted quarter note.

Second line of musical notation for section N, continuing the eighth-note pattern with slurs and ties.

O

Third line of musical notation for section N, featuring a change in dynamics to *f* and a fermata over a dotted quarter note.

Fourth line of musical notation for section N, starting with a dynamic marking of *p*, moving to *f*, and ending with a triplet of eighth notes.

P

First line of musical notation for section P, starting with a dynamic marking of *mf*.

Second line of musical notation for section P, continuing the melodic line.

Third line of musical notation for section P, ending with a fermata over a dotted quarter note.

Q

First line of musical notation for section Q, featuring a dynamic marking of *ff*.

R *rall.*

Second line of musical notation for section Q, marked *rall.* and featuring a fermata over a dotted quarter note.

Third line of musical notation for section Q, ending with a triplet of eighth notes and a dynamic marking of *pp*.