

Horn in Eb 3

VALLIS ROTUNDAE

Italian Style Marcia Sinfonica

♩ = 100

by ILIO VOLANTE

Staff A: Treble clef, common time. Starts with a rest, then a series of eighth notes with accents. Dynamics: *f*. A box labeled 'A' is centered below the staff.

Staff B: Treble clef, common time. Continuation of eighth notes with accents. Dynamics: *f*. A box labeled 'B' is centered below the staff.

Staff C: Treble clef, common time. Continuation of eighth notes with accents. Dynamics: *p* then *ff*. A box labeled 'C' is centered below the staff.

Staff D: Treble clef, common time. Continuation of eighth notes with accents. Dynamics: *mp*. A box labeled 'D' is centered below the staff.

Staff E: Treble clef, common time. Continuation of eighth notes with accents. Dynamics: *mp*. A box labeled 'E' is centered below the staff.

Staff F: Treble clef, common time. Continuation of eighth notes with accents. Dynamics: *mf*. A box labeled 'F' is centered below the staff.

Staff G: Treble clef, common time. Continuation of eighth notes with accents. Dynamics: *mf*. A box labeled 'G' is centered below the staff.

Staff H: Treble clef, common time. Continuation of eighth notes with accents. Dynamics: *mf*. A box labeled 'H' is centered below the staff.

Staff I: Treble clef, common time. Continuation of eighth notes with accents. Dynamics: *mf*. A box labeled 'I' is centered below the staff.

VALLIS ROTUNDAE - Ilio Volante - HORN in Eb 3

G

Musical notation for section G, consisting of two staves of music. The first staff begins with a forte (*f*) dynamic marking. The music features eighth-note patterns and rests.

H

Musical notation for section H, consisting of two staves of music. The notation includes slurs and accents.

I

J

Musical notation for sections I and J, consisting of two staves of music. Section I includes a fortissimo (*ff*) dynamic marking and a triplet. Section J includes a forte (*f*) dynamic marking.

K

Musical notation for section K, consisting of two staves of music. The first staff begins with a mezzo-piano (*mp*) dynamic marking. The second staff begins with a forte (*f*) dynamic marking.

L

Musical notation for section L, consisting of two staves of music. The notation includes slurs and accents.

M

Musical notation for section M, consisting of two staves of music. The second staff begins with a mezzo-piano (*mp*) dynamic marking.

N

Musical notation for section N, consisting of two staves of music.

VALLIS ROTUNDAE - Ilio Volante - HORN in Eb 3



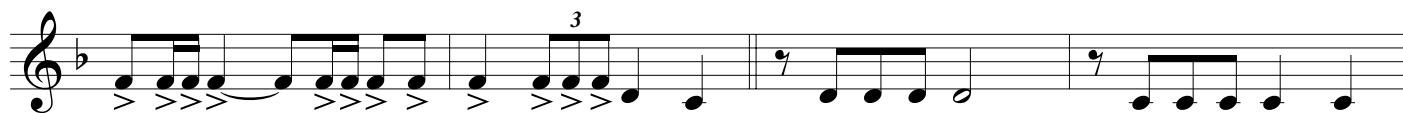
O



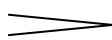
f

P

p



f



mf



o



ff

R *rall.*



pp