

Horn in F 2

VALLIS ROTUNDAE

Italian Style Marcia Sinfonica

♩ = 100

by ILIO VOLANTE

Staff A: Treble clef, key signature of two flats (B-flat and E-flat), common time (C). The staff begins with a whole rest. The first measure is marked with a dynamic of *f*. The music consists of a series of eighth notes with accents, starting on G4 and moving stepwise up to D5. A box labeled 'A' is positioned below the first measure.

Staff B: Treble clef, key signature of two flats. The music continues with eighth notes and accents, moving from D5 down to G4. A box labeled 'B' is positioned below the second measure.

Staff C: Treble clef, key signature of two flats. The music continues with eighth notes and accents, moving from G4 down to D4. A dynamic of *p* is marked at the beginning, and *ff* is marked at the end. A box labeled 'C' is positioned below the first measure.

Staff D: Treble clef, key signature of two flats. The music continues with eighth notes and accents, moving from D4 up to G4. A box labeled 'D' is positioned below the first measure.

Staff E: Treble clef, key signature of two flats. The music continues with eighth notes and accents, moving from G4 up to D5. A dynamic of *mp* is marked at the beginning. A box labeled 'E' is positioned below the first measure.

Staff F: Treble clef, key signature of two flats. The music continues with eighth notes and accents, moving from D5 down to G4. A box labeled 'F' is positioned below the first measure.

Staff G: Treble clef, key signature of two flats. The music continues with eighth notes and accents, moving from G4 down to D4. A dynamic of *mf* is marked at the end. A box labeled 'G' is positioned below the first measure.

Staff H: Treble clef, key signature of two flats. The music continues with eighth notes and accents, moving from D4 up to G4. A box labeled 'H' is positioned below the first measure.

Staff I: Treble clef, key signature of two flats. The music continues with eighth notes and accents, moving from G4 up to D5. The piece ends with a double bar line and repeat dots. A box labeled 'I' is positioned below the first measure.

VALLIS ROTUNDAE - Illo Volante - HORN in F 2

G

Two staves of musical notation for section G. The first staff begins with a dynamic marking of *f*. The music consists of eighth and sixteenth notes, with some triplets and slurs. The second staff continues the melodic line with similar rhythmic patterns and some accents.

H

Two staves of musical notation for section H. The first staff features a melodic line with slurs and accents. The second staff continues with similar phrasing, including some rests and dynamic changes.

I

J

Two staves of musical notation for sections I and J. Section I starts with a dynamic marking of *ff* and includes a triplet of eighth notes. Section J continues with a melodic line featuring slurs and accents.

K

Two staves of musical notation for section K. The first staff begins with a dynamic marking of *mp*. The second staff features a melodic line with a dynamic marking of *f* and includes slurs and accents.

L

Two staves of musical notation for section L. The first staff includes slurs and accents. The second staff continues with a melodic line featuring slurs and accents.

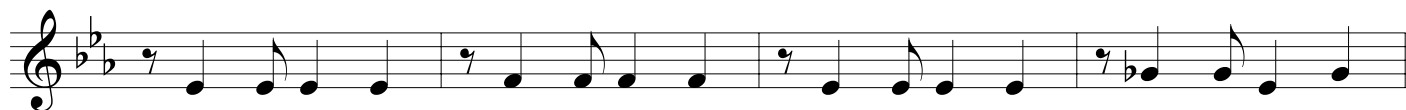
M

Two staves of musical notation for section M. The first staff includes a dynamic marking of *mp* and a slur. The second staff continues with a melodic line featuring slurs and accents.

N

Two staves of musical notation for section N. The first staff includes a dynamic marking of *mp* and a slur. The second staff continues with a melodic line featuring slurs and accents.

VALLIS ROTUNDAE - Ilio Volante - HORN in F 2



O



f

p

P



f

mf



Q



ff

R *rall.*



pp