

Flute

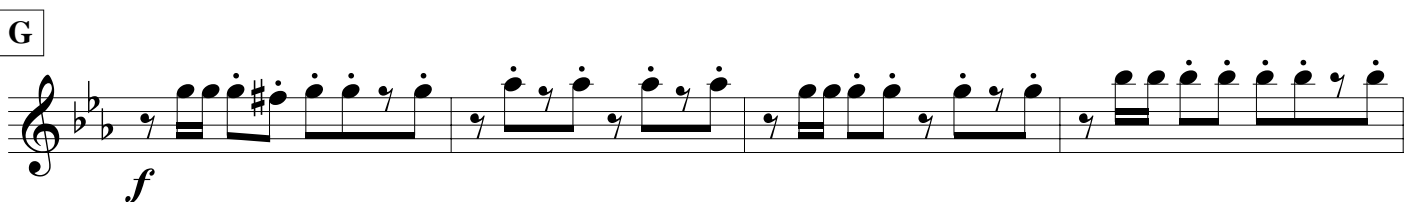
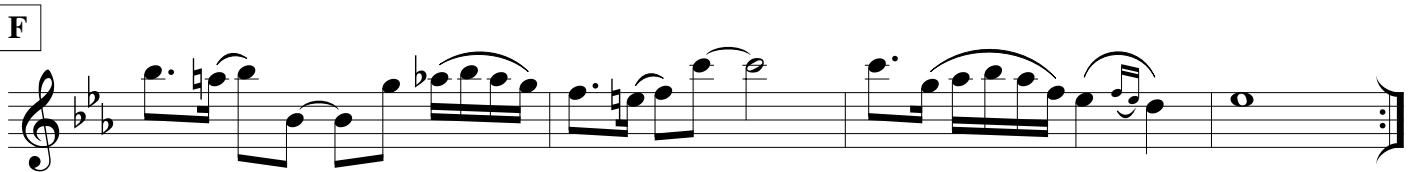
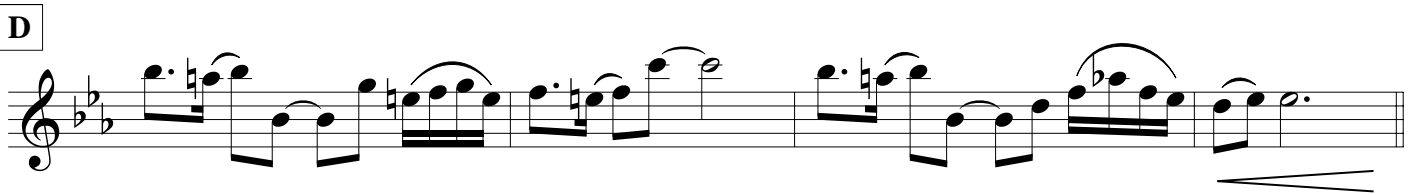
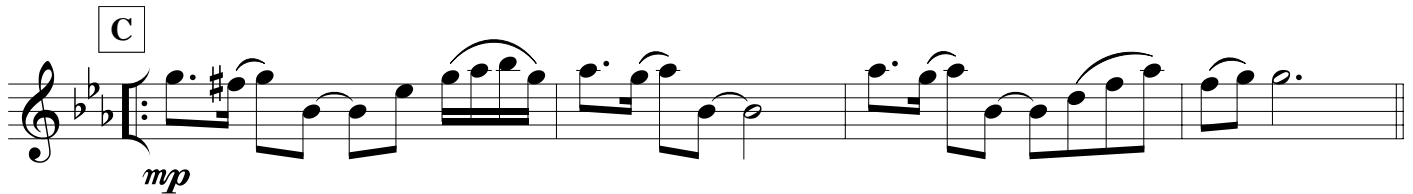
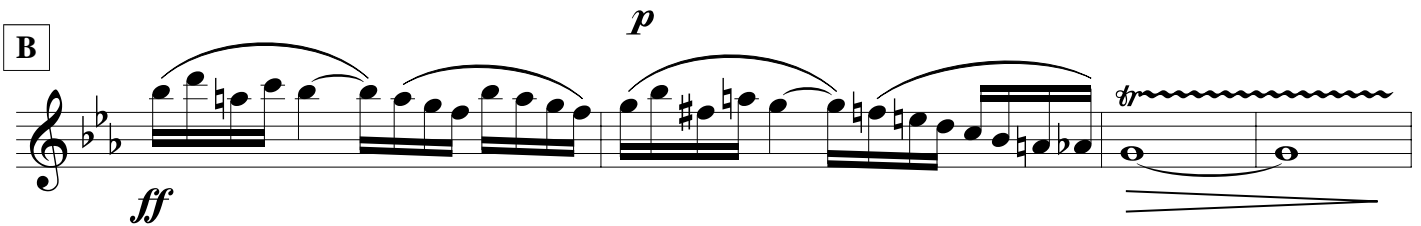
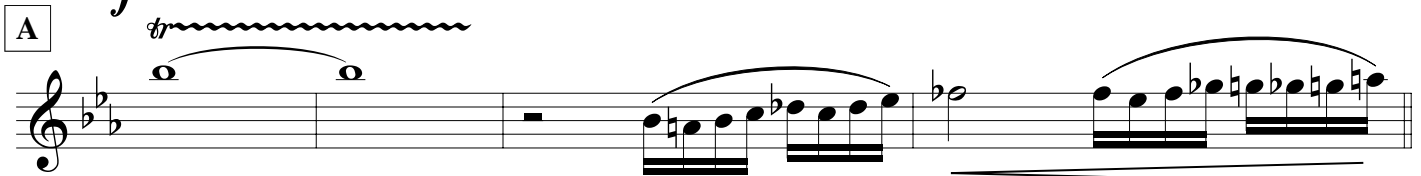
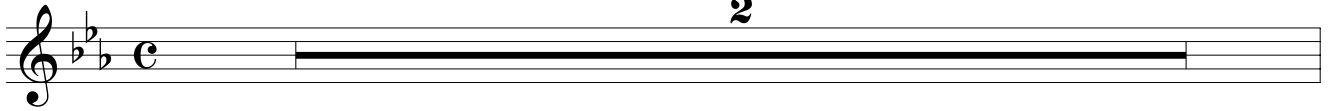
VALLIS ROTUNDAE

Italian Style Marcia Sinfonica

♩ = 100

by ILIO VOLANTE

2



VALLIS ROTUNDAE - Ilio Volante - FLUTE

H

I

J

f

mp

K

f

L

M

b

8

VALLIS ROTUNDAE - Ilio Volante - FLUTE

N

First line of musical staff N, starting with a treble clef and a key signature of three flats. The music begins with a piano (*p*) dynamic and features a series of eighth-note patterns with slurs and ties. A fermata is placed over the final note of the line.

Second line of musical staff N, continuing the eighth-note patterns from the first line.

Third line of musical staff N, featuring a dynamic shift to forte (*f*) and a fermata over the final note.

Fourth line of musical staff N, starting with a piano (*p*) dynamic, moving to forte (*f*), and ending with a triplet of eighth notes.

P

First line of musical staff P, starting with a mezzo-forte (*mf*) dynamic and featuring a half note followed by eighth-note patterns.

Second line of musical staff P, continuing the eighth-note patterns.

Third line of musical staff P, continuing the eighth-note patterns.

Q

First line of musical staff Q, featuring a fortissimo (*ff*) dynamic and eighth-note patterns.

Second line of musical staff Q, starting with a *rall.* (rallentando) marking and ending with a fermata.

Third line of musical staff Q, featuring a piano (*pp*) dynamic and ending with a fermata.