

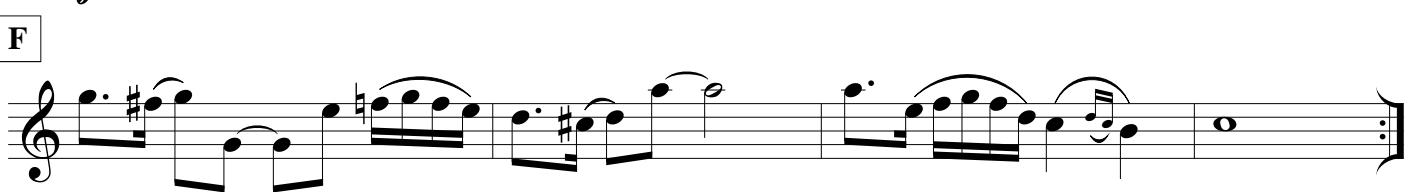
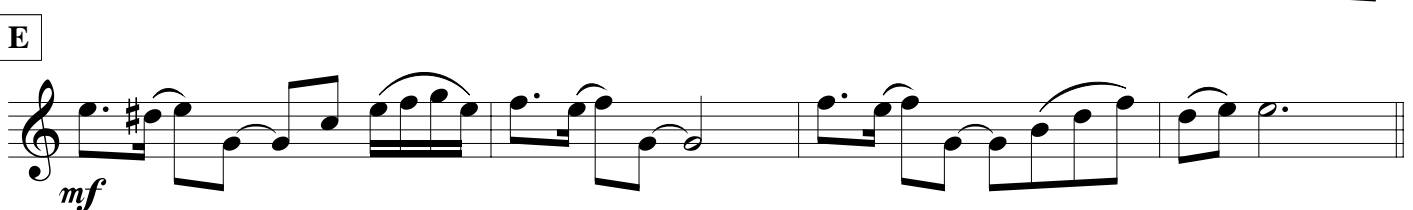
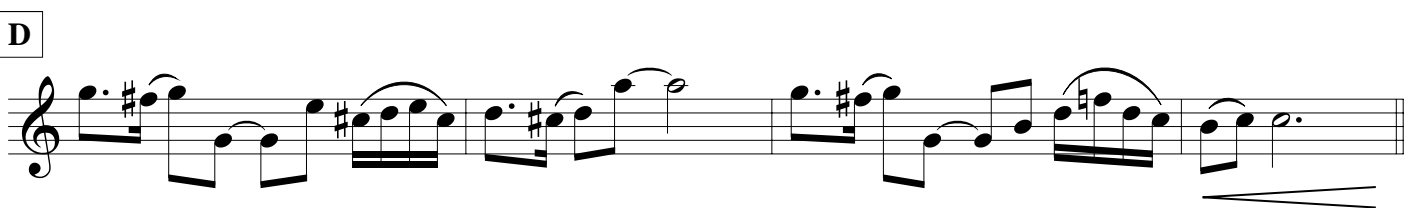
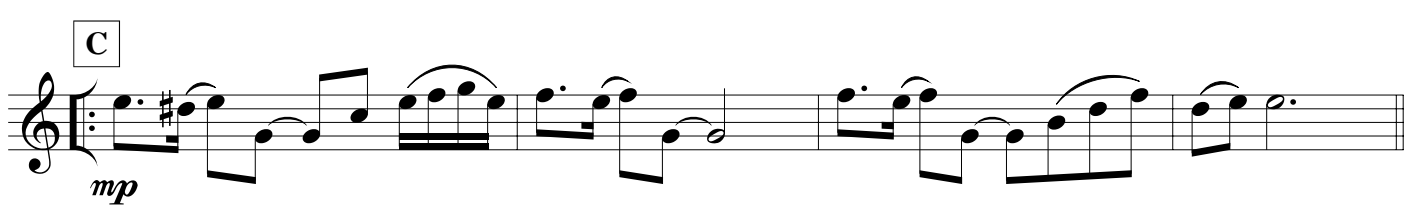
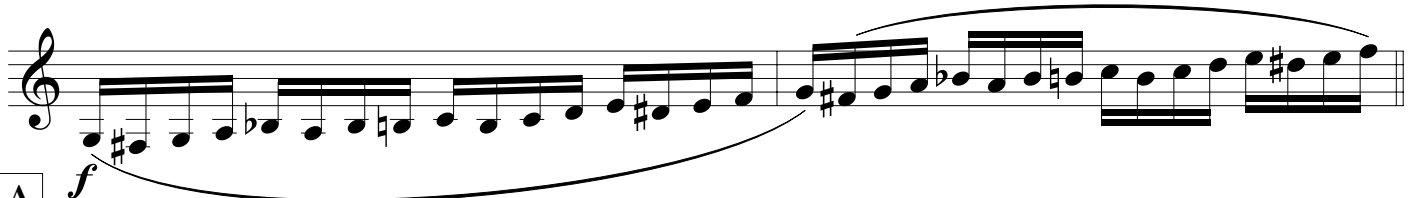
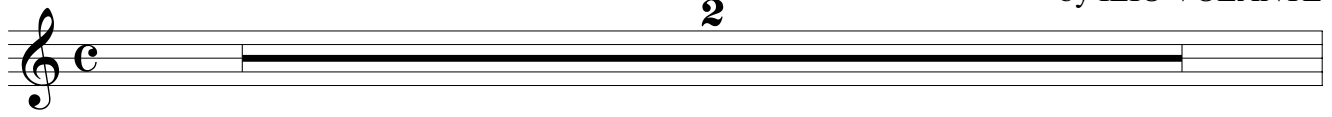
Clarinet in E \flat

VALLIS ROTUNDAE

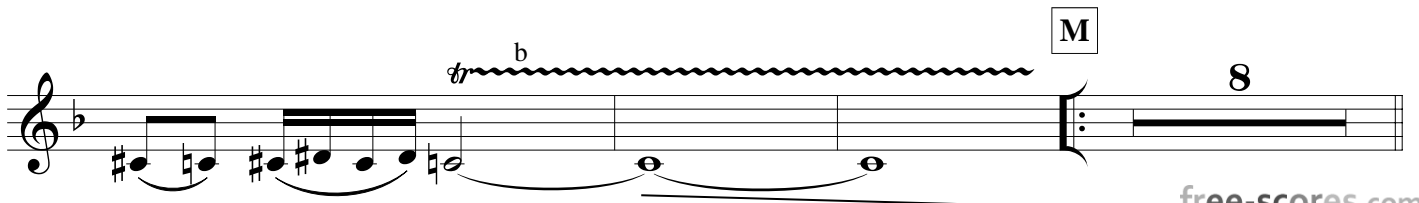
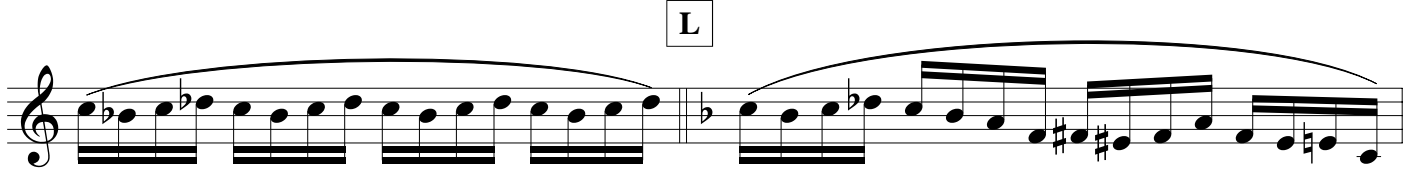
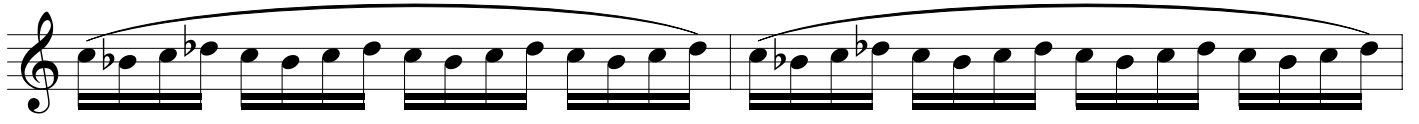
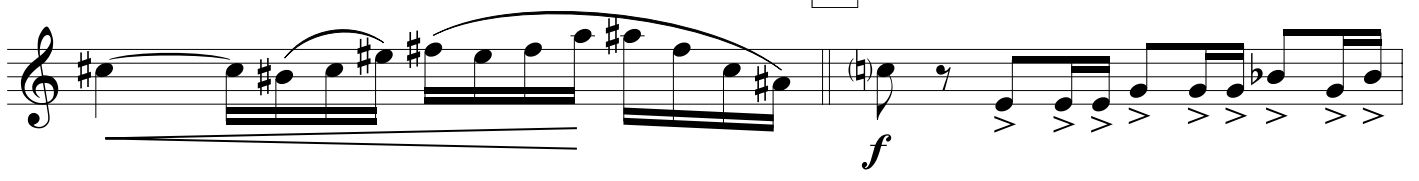
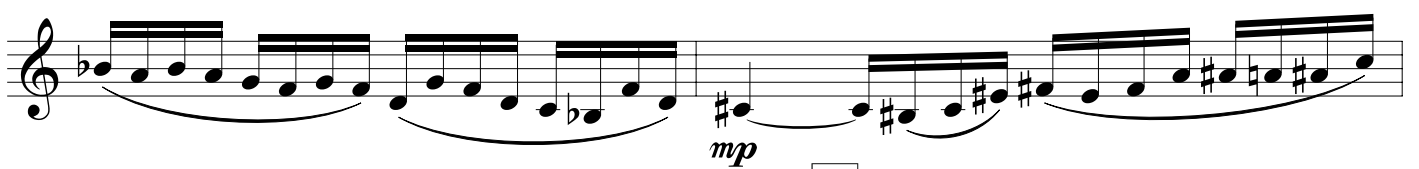
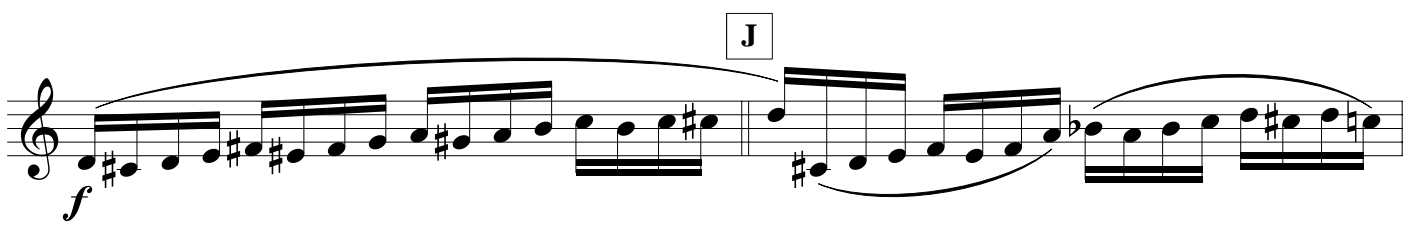
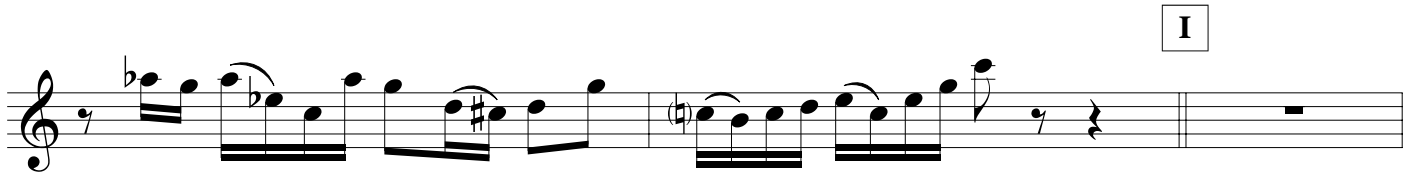
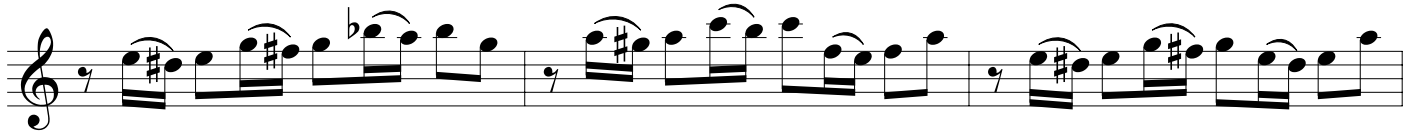
Italian Style Marcia Sinfonica

$\text{♩} = 100$

by ILIO VOLANTE



VALLIS ROTUNDAE - Illo Volante - CLERINET in Eb



VALLIS ROTUNDAE - Ilio Volante - CLERINET in Eb

N

First line of musical staff N, starting with a treble clef and a key signature of one flat. The music begins with a piano (*p*) dynamic and features a series of eighth notes with slurs and ties. A fermata is placed over the final note of the line.

Second line of musical staff N, continuing the melodic line with eighth notes and slurs.

O

Third line of musical staff N, featuring a dynamic shift to forte (*f*) and a fermata over the final note.

Fourth line of musical staff N, starting with a piano (*p*) dynamic, moving to forte (*f*), and ending with a triplet of eighth notes.

P

First line of musical staff P, starting with a mezzo-forte (*mf*) dynamic and featuring a series of eighth notes with slurs.

Second line of musical staff P, continuing the melodic line with eighth notes and slurs.

Third line of musical staff P, continuing the melodic line with eighth notes and slurs.

Q

First line of musical staff Q, featuring a forte (*ff*) dynamic and a series of eighth notes with slurs.

R *rall.*

First line of musical staff R, starting with a *rall.* (rallentando) marking and featuring a series of eighth notes with slurs. A fermata is placed over the final note.

Second line of musical staff R, starting with a piano (*pp*) dynamic and featuring a series of eighth notes with slurs. A fermata is placed over the final note.