

Clarinet in B $\flat$  2

# VALLIS ROTUNDAE

Italian Style Marcia Sinfonica

$\text{♩} = 100$

by ILIO VOLANTE

2



A *f*



B



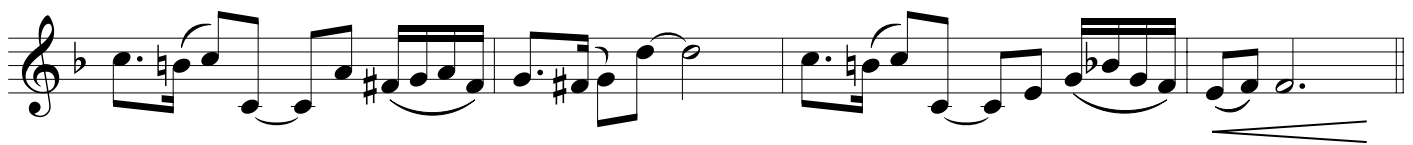
*ff*

C



*mp*

D

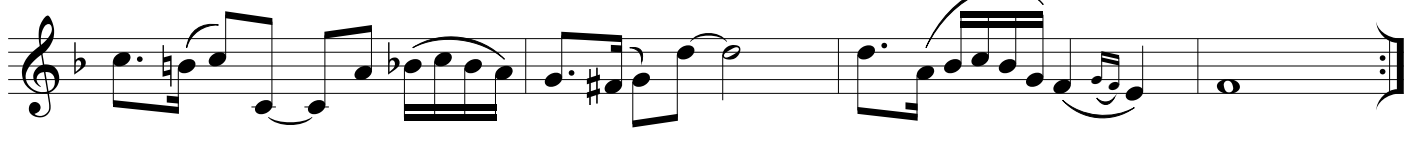


E

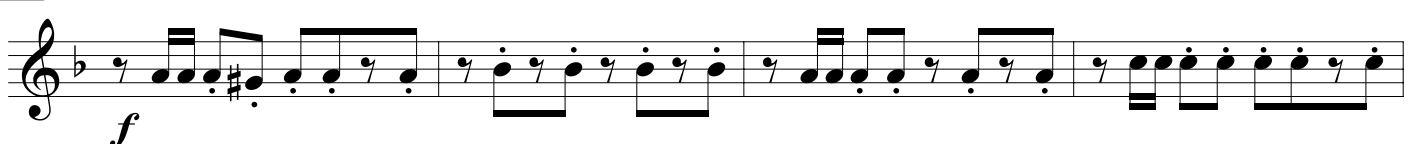


*mf*

F

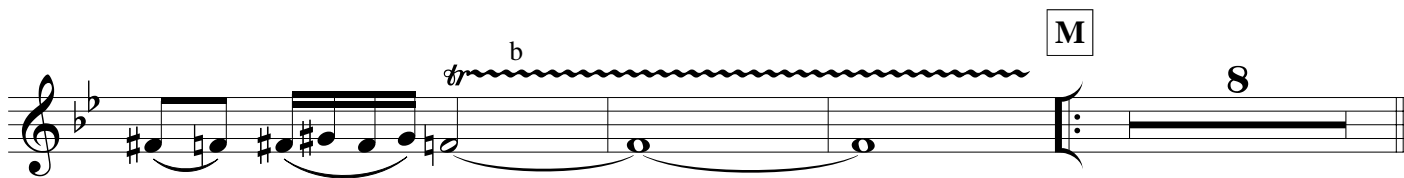
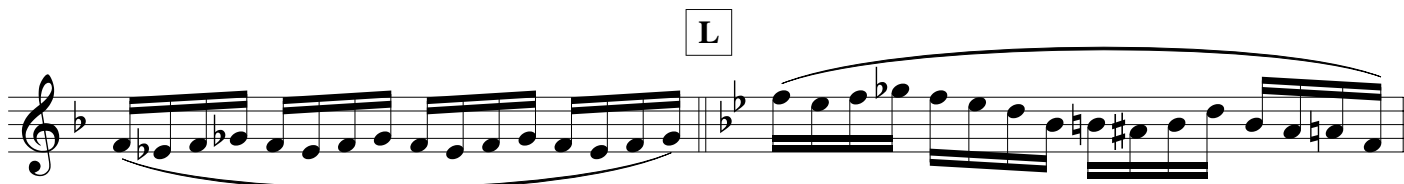
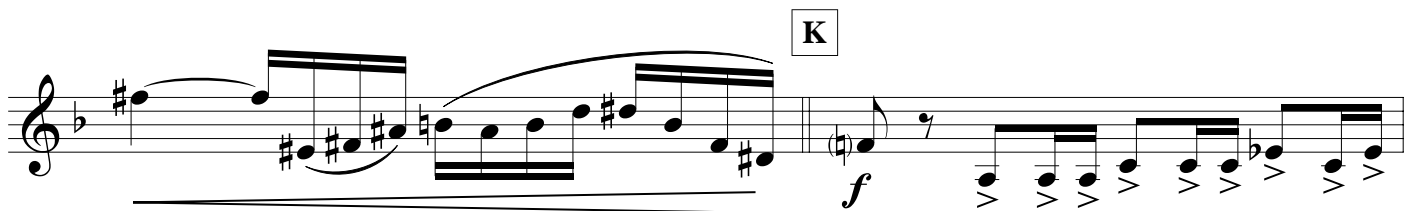
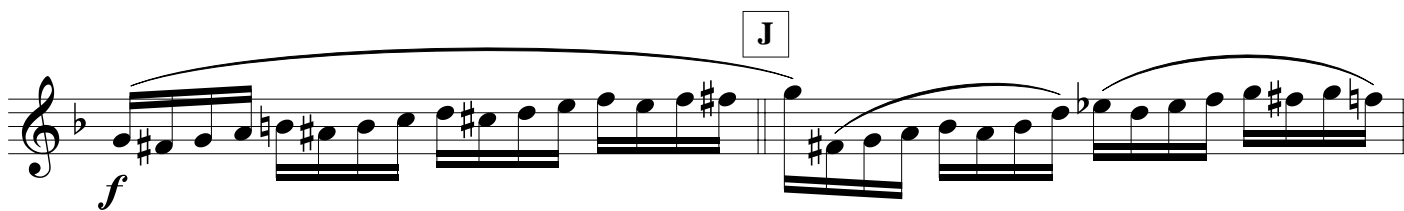


G



*f*

VALLIS ROTUNDAE - Illo Volante - CLARINET in Bb 2



VALLIS ROTUNDAE - Ilio Volante - CLARINET in Bb 2

N

First line of musical staff N, starting with a treble clef, a key signature of two flats (Bb and Eb), and a common time signature. The music begins with a piano (*p*) dynamic and features a series of eighth notes with slurs and ties. A fermata is placed over the final note of the line.

Second line of musical staff N, continuing the melodic line with eighth notes and slurs.

O

Third line of musical staff N, featuring a forte (*f*) dynamic and a fermata over the final note.

Fourth line of musical staff N, starting with a piano (*p*) dynamic, moving to a forte (*f*) dynamic, and ending with a triplet of eighth notes.

P

First line of musical staff P, starting with a mezzo-forte (*mf*) dynamic and featuring a series of eighth notes with slurs.

Second line of musical staff P, continuing the melodic line with eighth notes and slurs.

Third line of musical staff P, concluding the section with a fermata over the final note.

Q

First line of musical staff Q, featuring a fortissimo (*ff*) dynamic and a series of eighth notes with slurs.

R *rall.*

Second line of musical staff Q, starting with a *rall.* (rallentando) marking and featuring a series of eighth notes with slurs. A fermata is placed over the final note.

Third line of musical staff Q, starting with a pianissimo (*pp*) dynamic and featuring a series of eighth notes with slurs. A fermata is placed over the final note, which is a triplet of eighth notes.