

Clarinet in Bb 3

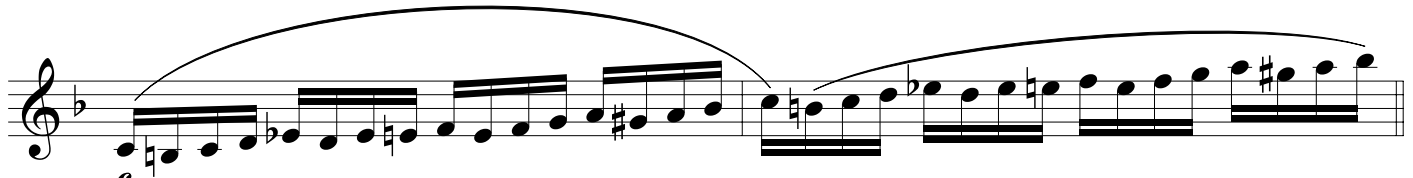
VALLIS ROTUNDAE

Italian Style Marcia Sinfonica

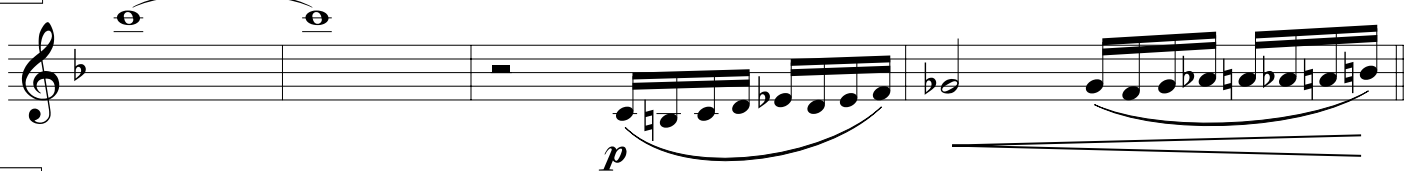
♩ = 100

by ILIO VOLANTE

2



A *f*



B



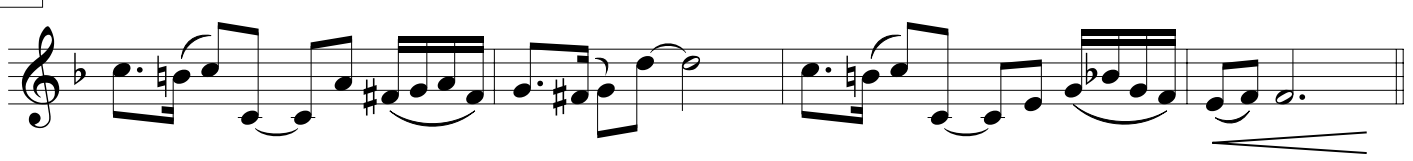
ff

C



mp

D



E

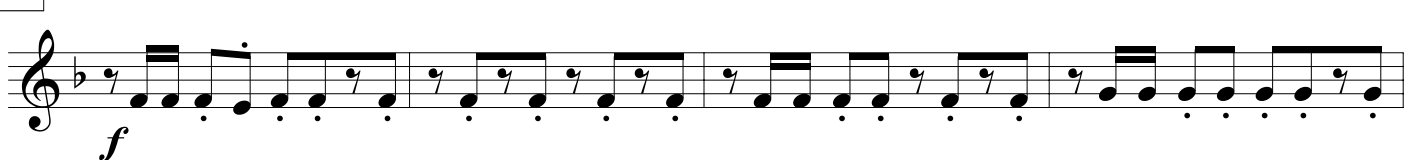


mf

F

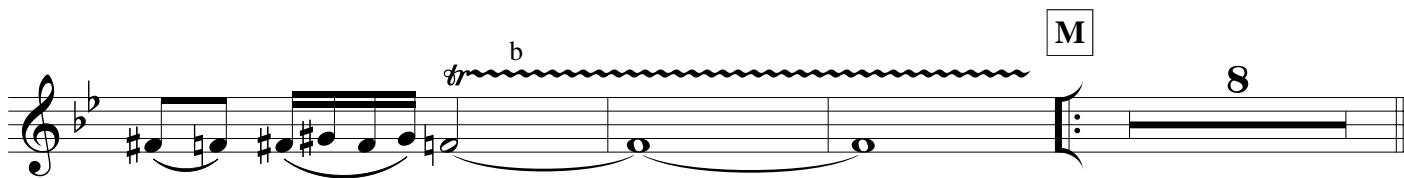
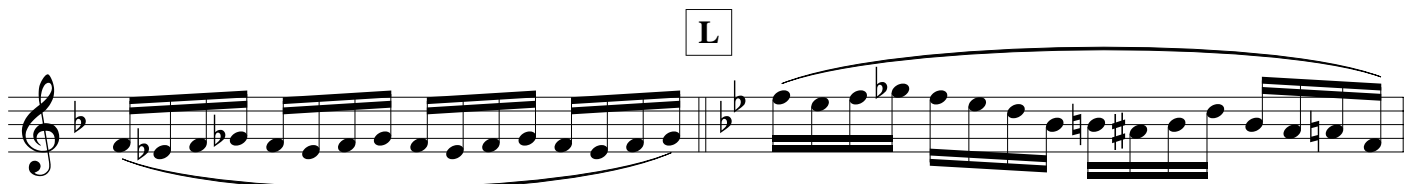
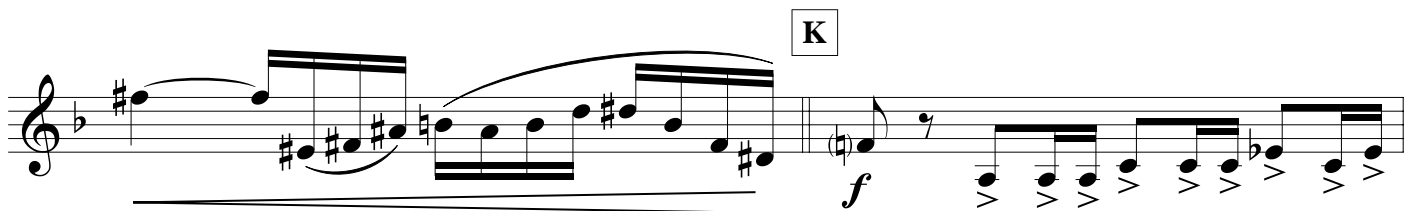
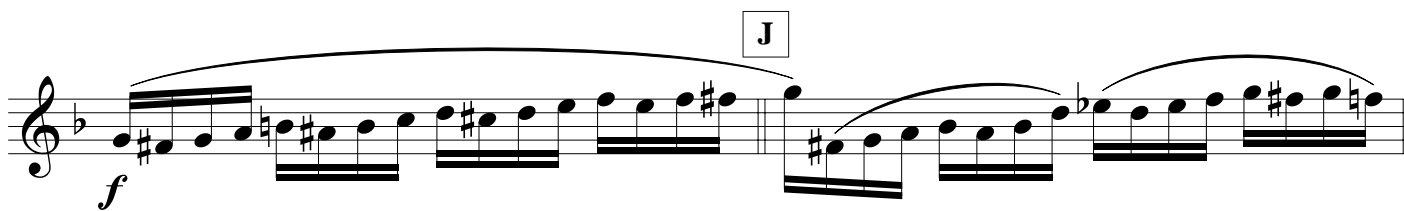


G



f

VALLIS ROTUNDAE - Illo Volante - CLARINET in Bb 3



VALLIS ROTUNDAE - Ilio Volante - CLARINET in Bb 3

N

First line of musical staff N, starting with a treble clef, a key signature of two flats (Bb and Eb), and a common time signature. The music begins with a piano (*p*) dynamic and features a series of eighth notes with slurs and ties. A fermata is placed over the final note of the line.

Second line of musical staff N, continuing the melodic line with eighth notes and slurs.

O

Third line of musical staff N, featuring a forte (*f*) dynamic and a crescendo hairpin. The music includes eighth notes and a triplet of eighth notes.

Fourth line of musical staff N, starting with a piano (*p*) dynamic, moving to a forte (*f*) dynamic, and ending with a triplet of eighth notes.

P

First line of musical staff P, starting with a mezzo-forte (*mf*) dynamic and featuring a melodic line with slurs and ties.

Second line of musical staff P, continuing the melodic line with slurs and ties.

Third line of musical staff P, concluding the section with a melodic line and a fermata over the final note.

Q

First line of musical staff Q, featuring a fortissimo (*ff*) dynamic and a melodic line with slurs and ties.

R *rall.*

Second line of musical staff Q, marked *rall.* (rallentando), featuring a melodic line with slurs and ties, and a fermata over the final note.

Third line of musical staff Q, starting with a pianissimo (*pp*) dynamic and a triplet of eighth notes. The music concludes with a fermata over the final note.