

F-Eb Bass

VALLIS ROTUNDAE

Italian Style Marcia Sinfonica

♩ = 100

by ILIO VOLANTE

2

f

A

p

B

ff

C

mp

D

E

mf

F

G

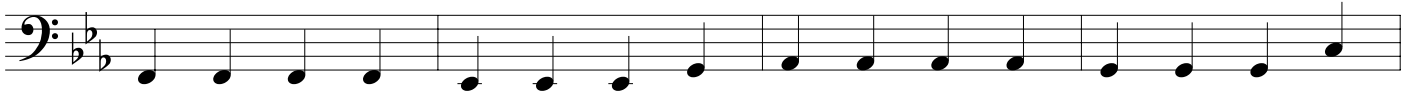
f

VALLIS ROTUNDAE - Ilio Volante - F-Eb BASS

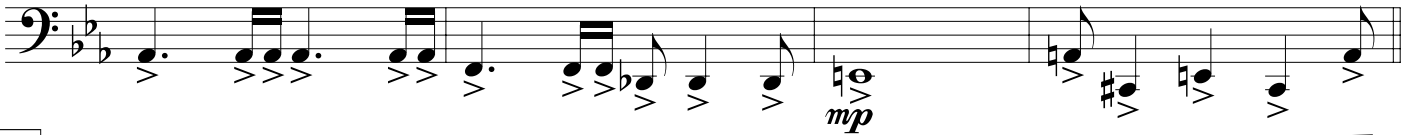
H



I



J



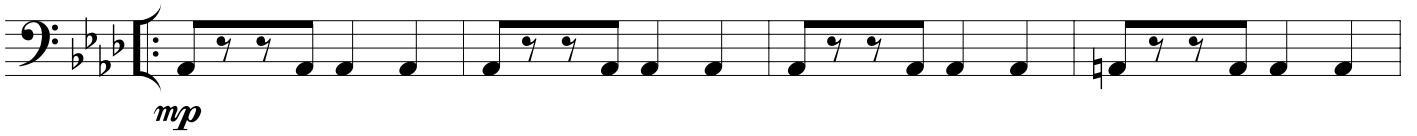
K



L



M



N



VALLIS ROTUNDAE - Ilio Volante - F-Eb BASS

O

Musical notation for section O, bass clef, key signature of three flats. The piece begins with a dynamic marking of *f*. The melody consists of eighth and sixteenth notes. A dynamic marking of *p* appears in the second measure, followed by another *f* in the fourth measure. A triplet of eighth notes is marked with a '3' above it in the eighth measure. The section concludes with a fermata.

P

Musical notation for section P, bass clef, key signature of three flats. The piece begins with a dynamic marking of *mf*. The notation includes rests, eighth notes, and sixteenth notes. The section concludes with a fermata.

Q

Musical notation for section Q, bass clef, key signature of three flats. The piece begins with a dynamic marking of *ff*. The notation includes accents (>) over many notes. The section concludes with a fermata.

R *rall.*

Musical notation for section R, bass clef, key signature of three flats. The piece begins with a dynamic marking of *pp*. The notation includes accents (>) over many notes. The section concludes with a fermata.