

SAFETY LINE

FROM MOSCOW TO ROME

Euphonium

by ILIO VOLANTE

♩ = 120

Two measures of music in bass clef, key signature of two flats, and common time. Each measure contains a whole note, with a '2' written above the note.

Section A: Two measures of music in bass clef, key signature of two flats, and common time. The first measure contains a whole note with a '2' above it. The second measure contains a half note with a 'B' above it. The dynamic *mp* is written below the first measure.

Two measures of music in bass clef, key signature of two flats, and common time, continuing from the previous staff.

Section C: Two measures of music in bass clef, key signature of two flats, and common time, starting with a 'C' above the first measure.

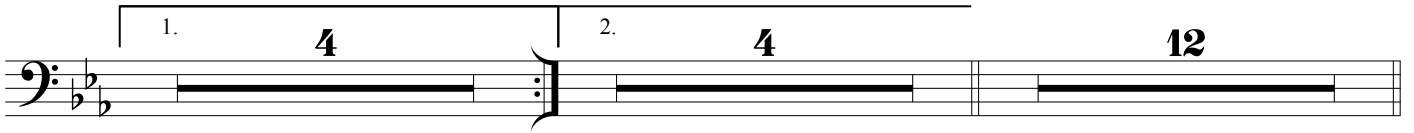
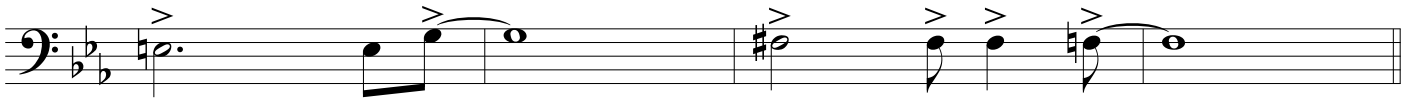
Two measures of music in bass clef, key signature of two flats, and common time, continuing from the previous staff.

Section D: Two measures of music in bass clef, key signature of two flats, and common time, starting with a 'D' above the first measure. The first measure contains a whole note with a '3' above it.

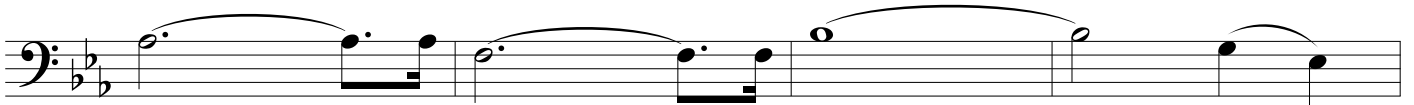
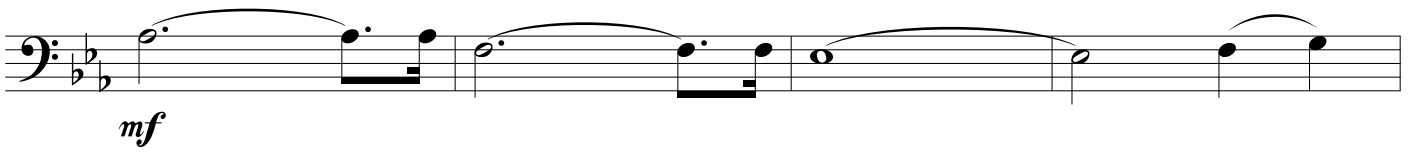
Two measures of music in bass clef, key signature of two flats, and common time, continuing from the previous staff.

Section E: Two measures of music in bass clef, key signature of two flats, and common time, starting with an 'E' above the first measure. The dynamic *f* is written below the first measure.

SAFETY LINE - Ilio Volante - EUPHONIUM



F



G

