

RAGGIO VERDE

Alto Sax

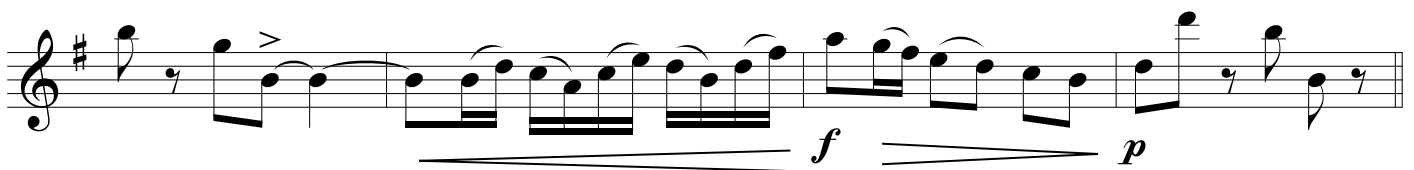
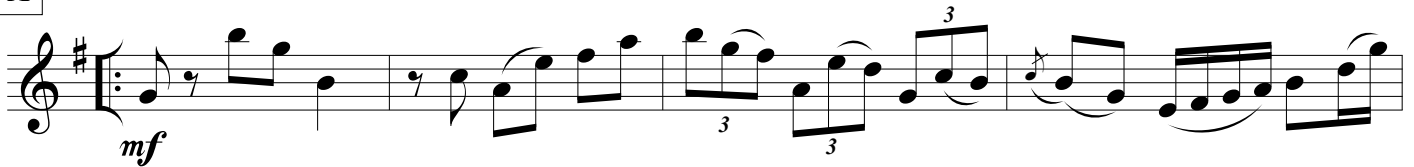
Version for Alto Sax & Trombone

♩ = 100

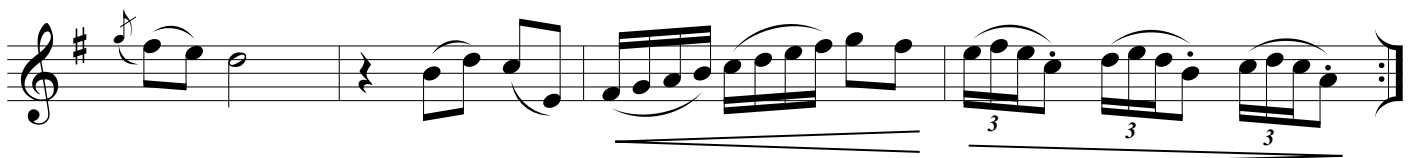
by ILIO VOLANTE



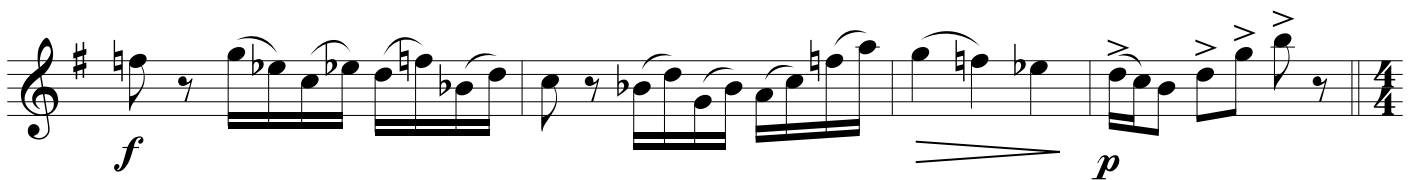
A



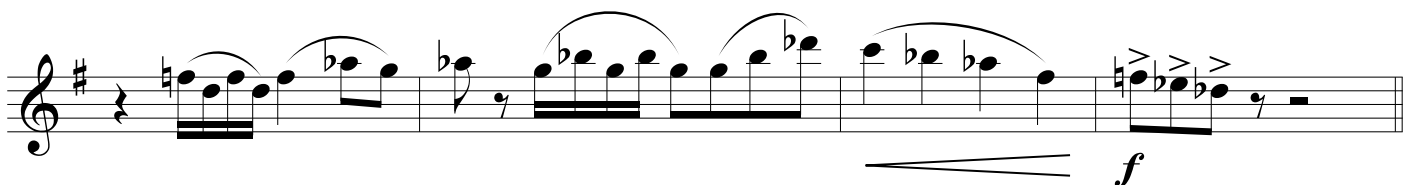
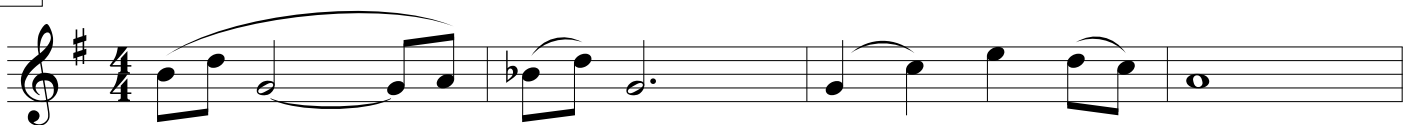
B



C



D



RAGGIO VERDE - Ilio Volante - ALTO SAX

E

Section E consists of two staves of music. The first staff begins with a treble clef, a key signature of one sharp (F#), and a 4/4 time signature. The music starts with a mezzo-piano (*mp*) dynamic. The second staff continues the melody, featuring several triplet markings (indicated by a '3' above the notes) and a fortissimo (*ff*) dynamic marking towards the end of the section.

F

Section F consists of two staves of music. The first staff begins with a treble clef, a key signature of one sharp (F#), and a 4/4 time signature. The music starts with a mezzo-piano (*mp*) dynamic. The second staff continues the melody, featuring a forte (*f*) dynamic marking and a 3/4 time signature at the end of the section.

G

Section G consists of two staves of music. The first staff begins with a treble clef, a key signature of one sharp (F#), and a 3/4 time signature. The music starts with a mezzo-forte (*mf*) dynamic. The second staff continues the melody, featuring a forte (*f*) dynamic marking and a piano (*p*) dynamic marking towards the end of the section.

H

Section H consists of two staves of music. The first staff begins with a treble clef, a key signature of one sharp (F#), and a 4/4 time signature. The music starts with a mezzo-forte (*mf*) dynamic. The second staff continues the melody, featuring a forte (*f*) dynamic marking and a piano (*p*) dynamic marking towards the end of the section.

I

Section I consists of two staves of music. The first staff begins with a treble clef, a key signature of one sharp (F#), and a 4/4 time signature. The music starts with a forte (*f*) dynamic. The second staff continues the melody, featuring a piano (*p*) dynamic marking and a *rall.* (rallentando) and *rit.* (ritardando) marking towards the end of the section.