

MUSIK OHNE GRENZEN

MUSICA OLTRE I CONFINI

Bb Tuba

by ILIO VOLANTE

♩ = 100

First musical staff in bass clef, 3/4 time signature, key of Bb. It begins with a dynamic marking of *f* and contains several notes with accents.

Second musical staff in bass clef, continuing the piece with a dynamic marking of *ff*.

A

Third musical staff, marked with a repeat sign and dynamic markings of *mf* and *f*.

B

Fourth musical staff, marked with a dynamic marking of *p*.

C

Fifth musical staff, continuing the melodic line.

D

Sixth musical staff, marked with a dynamic marking of *ff* and containing several notes with accents.

E

Seventh musical staff, marked with a dynamic marking of *p*.

F

G

Eighth musical staff, featuring a double bar line with a '2' above it, indicating a second ending.

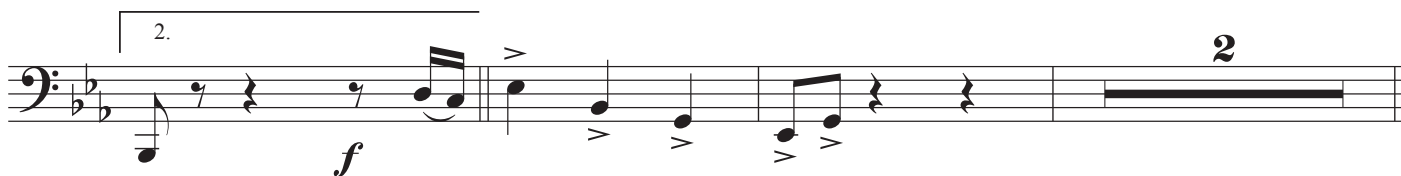
H



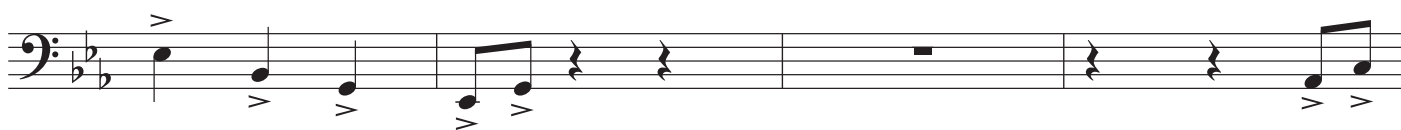
I



J



K



L

