

EXITUS ARTIS

Tromba in Si \flat

$\text{♩} = 100$

A

by ILIO VOLANTE

Musical notation for section A, starting with a dynamic marking of *f*. The notation includes a treble clef, a common time signature, and a series of notes with a triplet of eighth notes. There are accents and dynamic markings like *f* and *mp* throughout the section.

B

Musical notation for section B, starting with a dynamic marking of *p*. The notation includes a treble clef, a common time signature, and a series of notes with a triplet of eighth notes. There are accents and dynamic markings like *p* and *mf* throughout the section.

C

Musical notation for section C, starting with a dynamic marking of *mf*. The notation includes a treble clef, a common time signature, and a series of notes with a triplet of eighth notes. There are accents and dynamic markings like *mf*, *f*, and *mp* throughout the section.

Musical notation for section C continuation, starting with a dynamic marking of *mf*. The notation includes a treble clef, a common time signature, and a series of notes with a triplet of eighth notes. There are accents and dynamic markings like *mf*, *f*, and *mp* throughout the section.

Musical notation for section C continuation, starting with a dynamic marking of *mp*. The notation includes a treble clef, a common time signature, and a series of notes with a triplet of eighth notes. There are accents and dynamic markings like *mp* and *f* throughout the section.

D

Musical notation for section D, starting with a dynamic marking of *mf*. The notation includes a treble clef, a common time signature, and a series of notes with a triplet of eighth notes. There are accents and dynamic markings like *mf* and *mp* throughout the section.

Musical notation for section D continuation, starting with a dynamic marking of *f*. The notation includes a treble clef, a common time signature, and a series of notes with a triplet of eighth notes. There are accents and dynamic markings like *f* and *mp* throughout the section.

E

Musical notation for section E, starting with a dynamic marking of *mp*. The notation includes a treble clef, a common time signature, and a series of notes with a triplet of eighth notes. There are accents and dynamic markings like *mp* and *f* throughout the section.

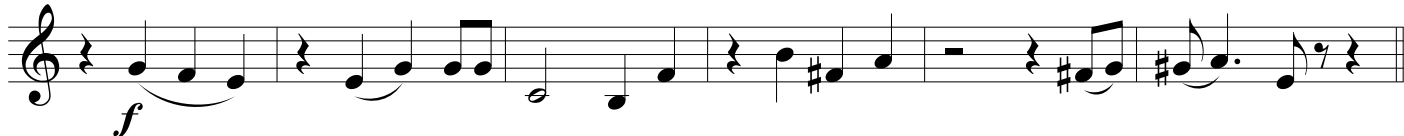
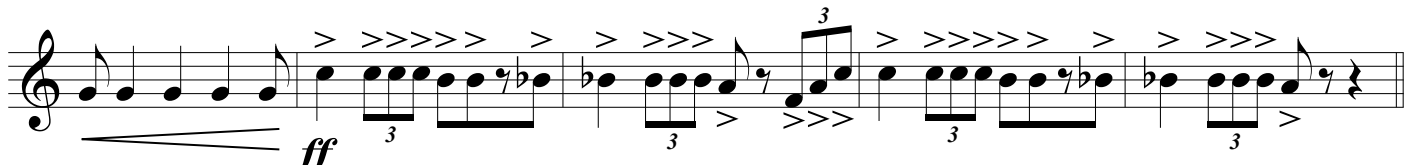
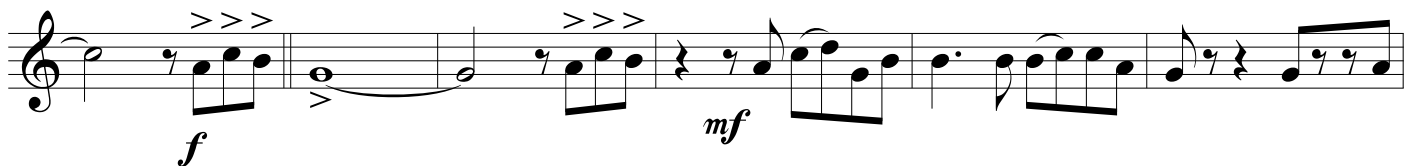
EXITUS ARTIS - Ilio Volante - TRUMPET in Bb



F



G



H

