

# DOGMA

For Wind Orchestra

Eufonio  
(Euphonium)

by ILIO VOLANTE

♩ = 110

A

B

4

4

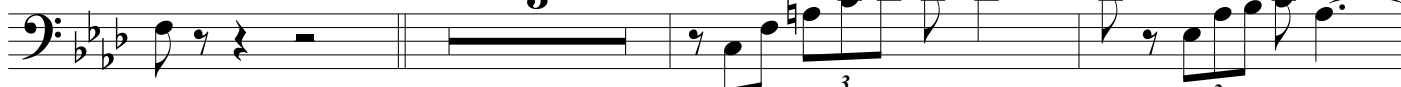


*mp*

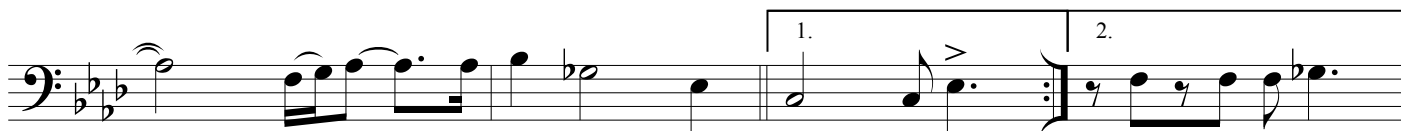


C

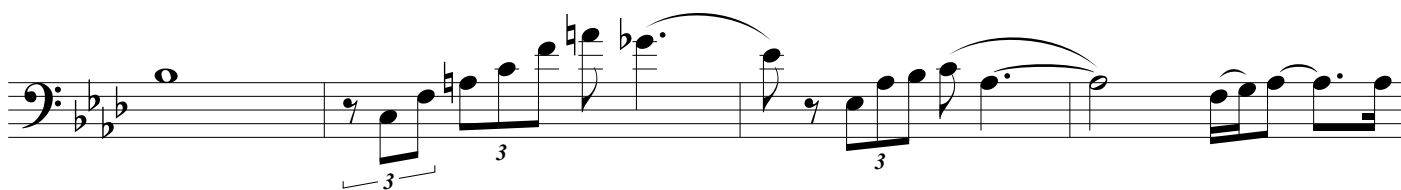
3



*mf*



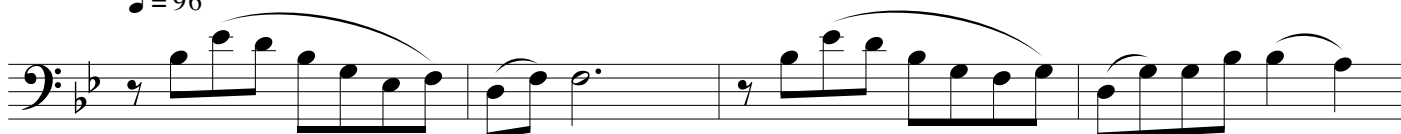
*f*



*rall.*



♩ = 96



*p*



3

DOGMA - Ilio Volante - EUPHONIUM

E

Section E consists of two staves of music. The first staff begins with a rest followed by a series of eighth notes and quarter notes, marked with a forte (*f*) dynamic. The second staff continues the melodic line with similar rhythmic patterns and phrasing.

F

Section F consists of two staves. The first staff features a melodic line with eighth notes and quarter notes, marked with a mezzo-forte (*mf*) dynamic. The second staff provides a harmonic accompaniment with sustained notes.

This block contains the continuation of section F, measures 7-10. It includes first and second endings. The first ending leads back to the beginning of the section, while the second ending concludes with a final cadence. A tempo marking of  $\text{♩} = 110$  is present.

Section G begins with a melodic line marked with a forte (*f*) dynamic. It features a change in key signature to a more complex mode, indicated by the presence of a natural sign over the second line of the bass clef.

This block continues section G, measures 13-14. It includes triplet markings over groups of three notes, adding rhythmic complexity to the melodic line.

H

Section H consists of two staves. The first staff shows a melodic line with a *rall.* (rallentando) marking. The second staff features a more active melodic line with accents and a *fp* (fortissimo) dynamic marking.

*fp*  $\leftarrow$  *sfz*