

Trombone 1

BEPPE IL BARONE

Aristocrazia Spicciola

♩ = 160

A

by ILIO VOLANTE

First musical staff (A) in bass clef, 3/4 time, key of B-flat. It begins with a forte (*f*) dynamic and features several accents (>) over the notes. The staff concludes with a mezzo-piano (*mp*) dynamic and a repeat sign.

B

C

Second musical staff (B and C) in bass clef, 3/4 time, key of B-flat. It continues the melodic line with various dynamics and articulations.

D

E

Third musical staff (D and E) in bass clef, 3/4 time, key of B-flat. It features a mezzo-forte (*mf*) dynamic, a crescendo leading to a forte (*f*) dynamic, and then a decrescendo to a mezzo-piano (*mp*) dynamic.

F

Fourth musical staff (F) in bass clef, 3/4 time, key of B-flat. It continues with a forte (*f*) dynamic and includes accents (>) over the notes.

G

H

Fifth musical staff (G and H) in bass clef, 3/4 time, key of B-flat. It starts with a mezzo-piano (*mp*) dynamic, followed by a crescendo to a fortissimo (*ff*) dynamic, and then a decrescendo to a mezzo-forte (*mf*) dynamic.

I

Sixth musical staff (I) in bass clef, 3/4 time, key of B-flat. It continues the melodic line with various dynamics and articulations.

J

Seventh musical staff (J) in bass clef, 3/4 time, key of B-flat. It begins with a repeat sign and continues with various dynamics and articulations.

K

Eighth musical staff (K) in bass clef, 3/4 time, key of B-flat. It concludes the piece with various dynamics and articulations.

BEPPE IL BARONE - Ilio Volante - TROMBONE

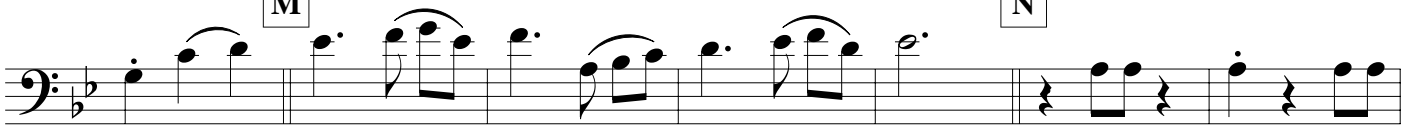
L



mp

M

N



p

mp

O



p

P

Q



f

R



ff

mp

S

T



mf

U

V

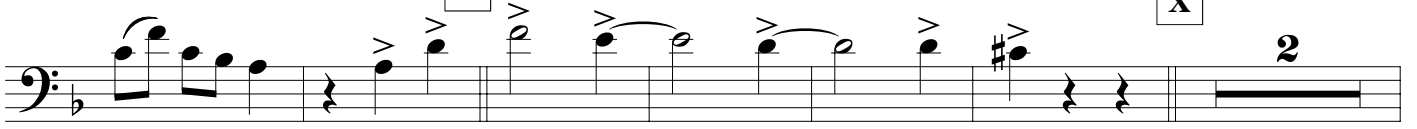


f

mp

W

X



f

Y



mp

ff