

Baritone Sax.

ATHMO SAX

Saxophone Quartet

by ILIO VOLANTE

♩ = 180

A

First musical staff (A) in treble clef, key signature of two sharps (F# and C#), 4/4 time signature. It begins with a dynamic marking of *f* and a tempo marking of ♩ = 180. The staff contains several measures of music, including a triplet of eighth notes.

Second musical staff (B) in treble clef, key signature of two sharps, 4/4 time signature. It continues the melody from staff A.

Third musical staff (C) in treble clef, key signature of two sharps, 4/4 time signature. It begins with a dynamic marking of *mp*. The staff contains several measures of music, including a triplet of eighth notes.

Fourth musical staff (D and E) in treble clef, key signature of two sharps, 4/4 time signature. It features a triplet of eighth notes and a dynamic marking of *mf*.

Fifth musical staff (F and G) in treble clef, key signature of two sharps, 4/4 time signature. It begins with a dynamic marking of *p* and ends with a dynamic marking of *mf*.

Sixth musical staff (H) in treble clef, key signature of two sharps, 4/4 time signature. It begins with a dynamic marking of *mp*.

Seventh musical staff (I) in treble clef, key signature of two sharps, 4/4 time signature. It begins with a dynamic marking of *p* and a tempo marking of ♩ = 74. The staff contains several measures of music, including a triplet of eighth notes.

Eighth musical staff (J and K) in treble clef, key signature of two sharps, 4/4 time signature. It continues the melody from staff I.

Ninth musical staff (L) in treble clef, key signature of two sharps, 4/4 time signature. It begins with a dynamic marking of *mp*.

ATHMO SAX - Ilio Volante - BARITONE SAX

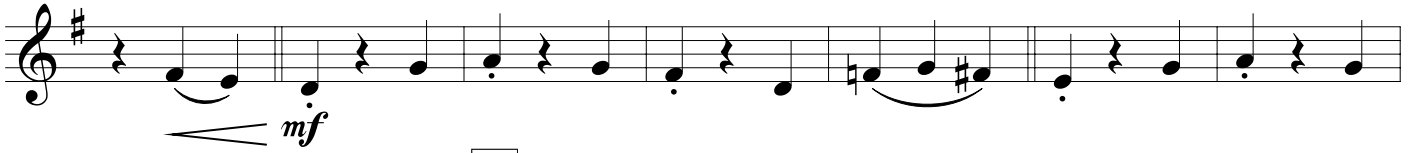
M

N



O

P



Q



♩ = 180

R

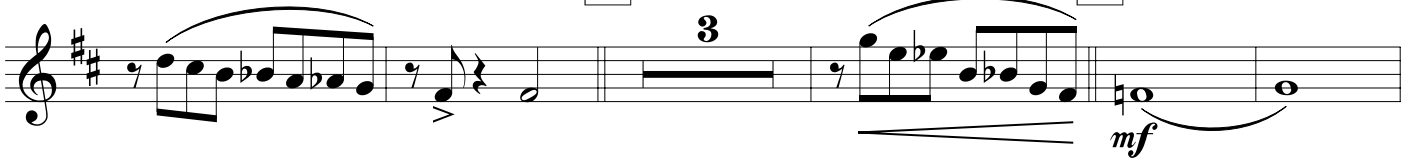


S

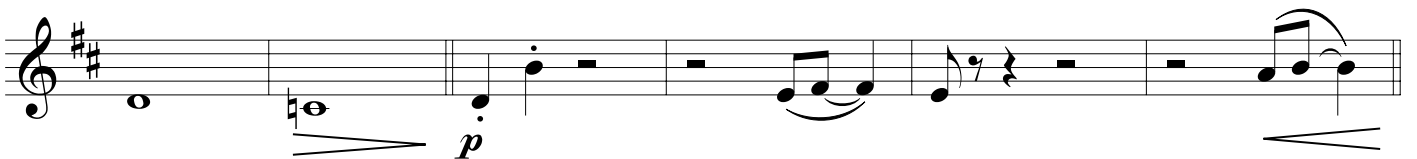


T

U



V



W

X



Y

