

Cbasse VI

Use Harmonic notes
as often as possible

CONCERTO N°1

(L'Estro Armonico Op. 3)

I

Allegro

Antonio VIVALDI

4

8

17

24

32

37

42

46

p

f

p

f

p

p

51

f

55

8

67

8

71

8

82

CONCERTO N°1

(L'Estro Armonico Op. 3)

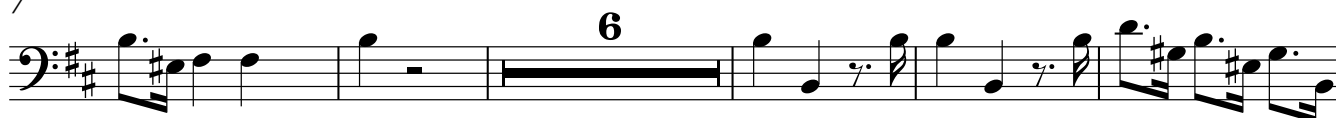
II

Largo e spiccato

Antonio VIVALDI



7



18



38



CONCERTO N°1

(L'Estro Armonico Op. 3)

III

Allegro

Antonio VIVALDI

3

8

13

24

29

41

46

51

56

p *f* *cresc.* *f* *p* *f*

61 24

Musical staff starting at measure 61. The key signature has two sharps (F# and C#). The staff contains four measures of music. The first measure has a half note G4, a quarter note A4, and a quarter note B4. The second measure has a quarter note B4, a quarter note A4, a quarter note G4, and a quarter rest. The third measure has a quarter rest, a quarter note F#4, a quarter note E4, and a quarter note D4. The fourth measure has a quarter rest, a quarter note C#4, a quarter note B3, and a quarter note A3. The staff ends with a double bar line and a repeat sign.

88 9

Musical staff starting at measure 88. The key signature has two sharps (F# and C#). The staff contains four measures of music. The first measure has a quarter note G4, a quarter rest, a quarter note A4, and a quarter note B4. The second measure has a quarter note B4, a quarter rest, a quarter note A4, and a quarter note G4. The third measure has a quarter note G4, a quarter rest, a quarter note F#4, and a quarter note E4. The fourth measure has a quarter note E4, a quarter rest, a quarter note D4, and a quarter note C#4. The staff ends with a double bar line and a repeat sign.

100

Musical staff starting at measure 100. The key signature has two sharps (F# and C#). The staff contains four measures of music. The first measure has a quarter note G4, a quarter rest, a quarter note A4, and a quarter note B4. The second measure has a quarter note B4, a quarter rest, a quarter note A4, and a quarter note G4. The third measure has a quarter note G4, a quarter rest, a quarter note F#4, and a quarter note E4. The fourth measure has a quarter note E4, a quarter rest, a quarter note D4, and a quarter note C#4. The staff ends with a double bar line and a repeat sign.

p *f*