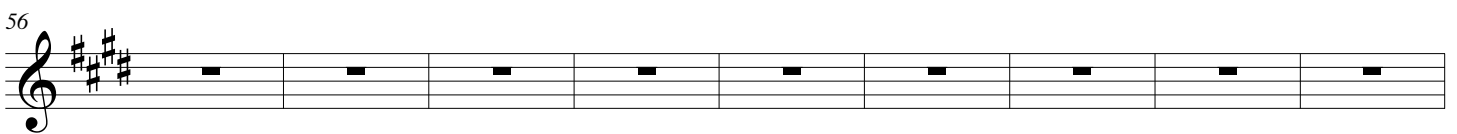
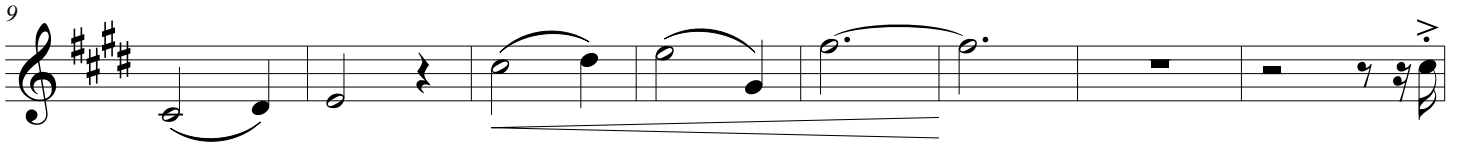
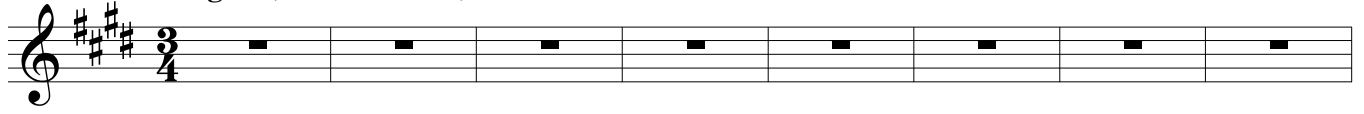


# Suite Symphonique "Regen"

Luigi Talarico

**Allegro** (M.M. ♩ = c. 120)





138

147

156

165

174

183

192

201

209

Suite Symphonique

4

218

227

235

244

252

261

270

279

*accel.*

$\text{♩} = 140$

286



342

348

357

365

372

379

387

$\text{♩} = 145$

395

401







544

*f*

551

557

564

572

580

588

*rit.*

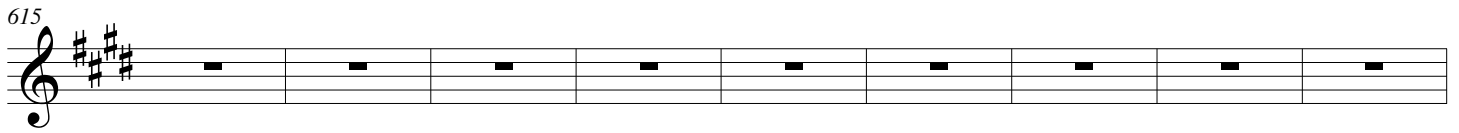
597

606

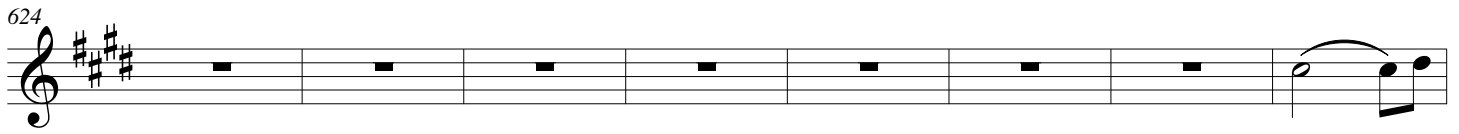
Suite Symphonique

10

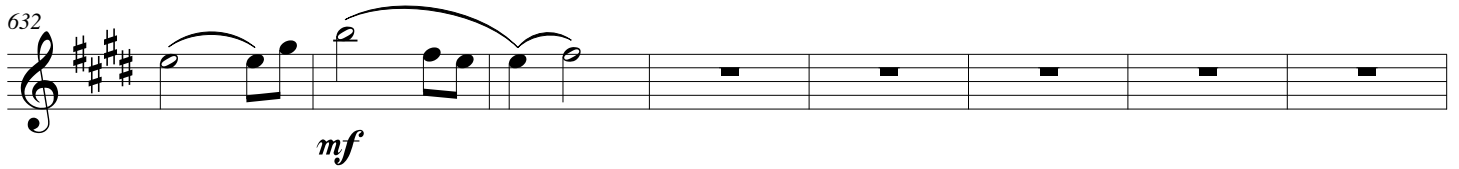
615



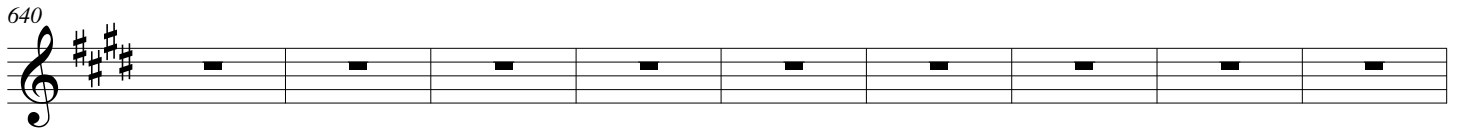
624



632



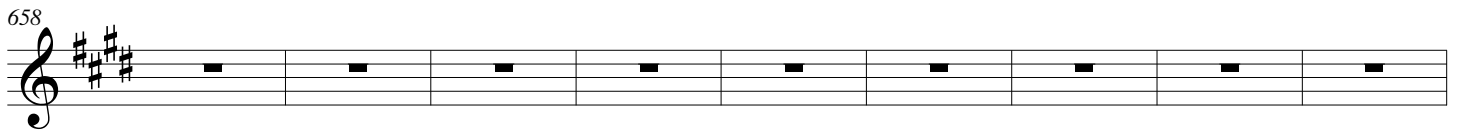
640



649



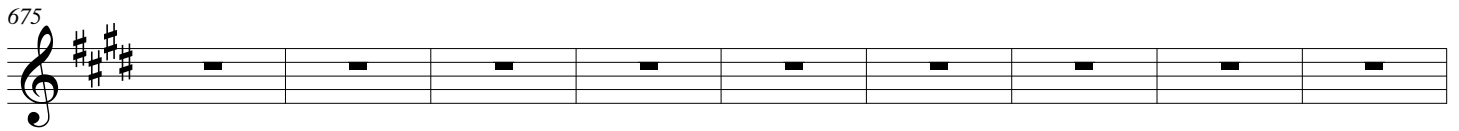
658



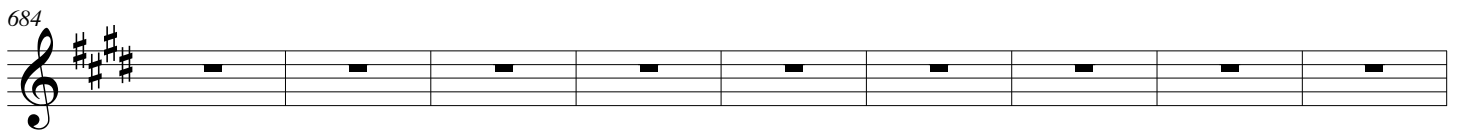
667



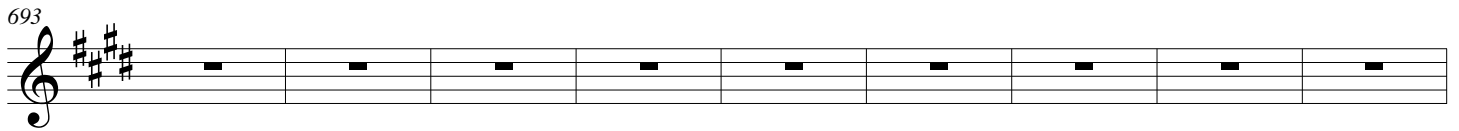
675



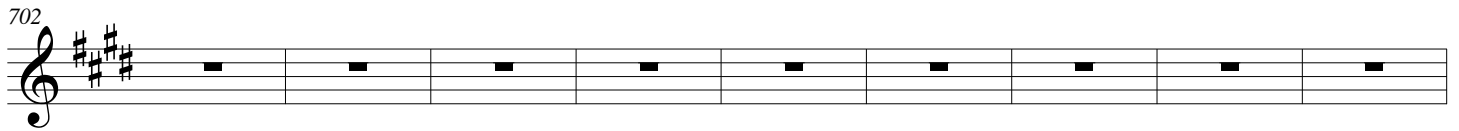
684



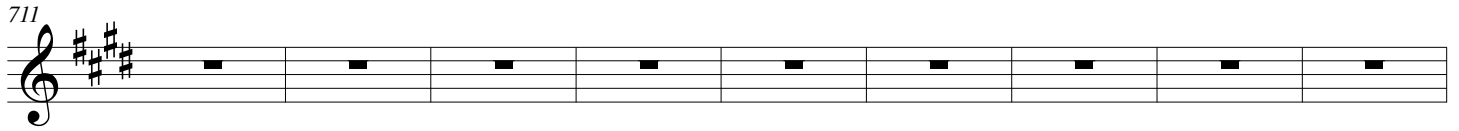
693



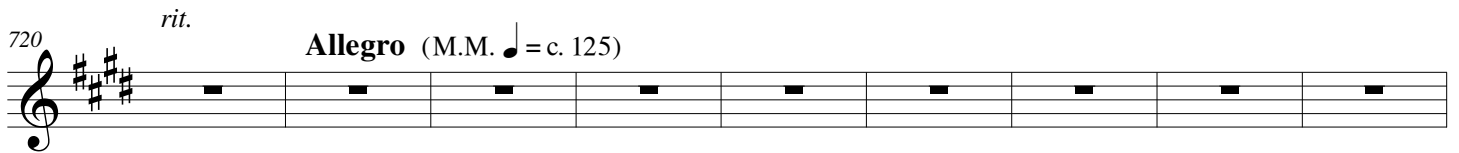
702



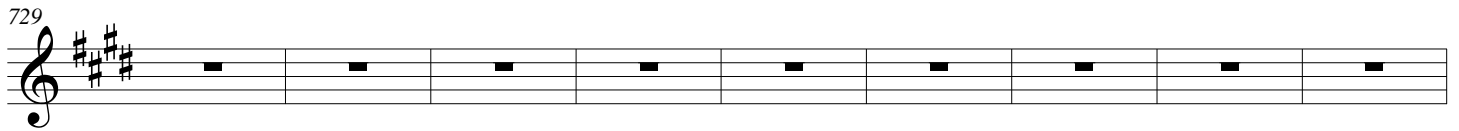
711



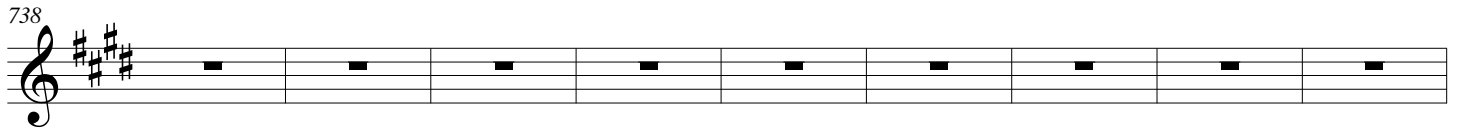
720 *rit.* **Allegro** (M.M. ♩ = c. 125)



729



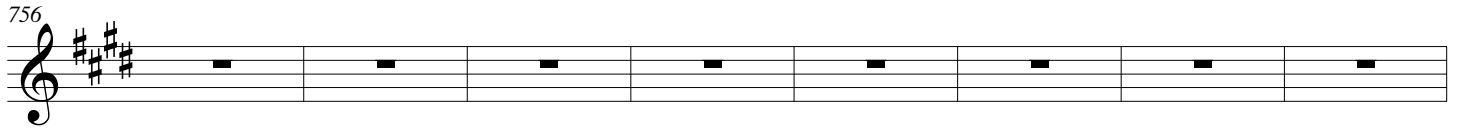
738



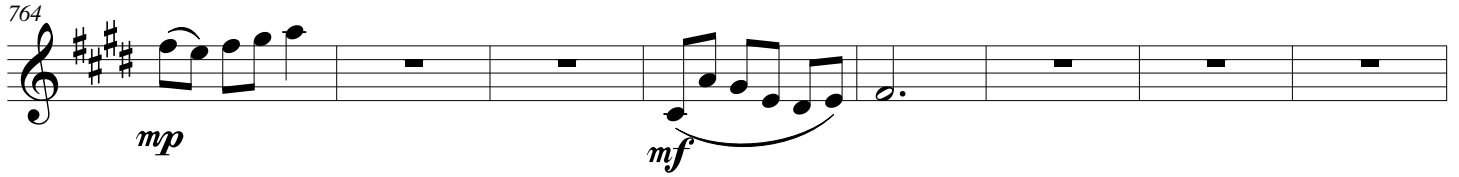
747



756



764





851

860

*mf*

868

876

885

894

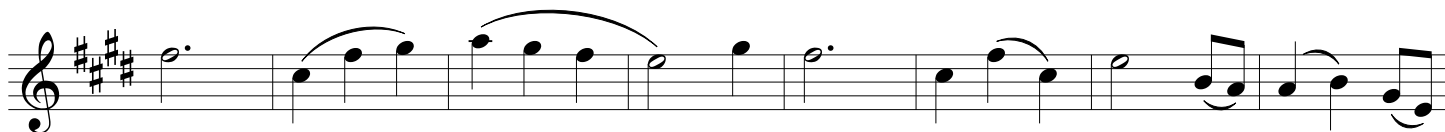
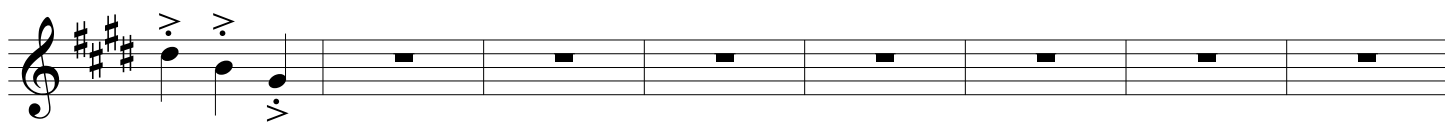
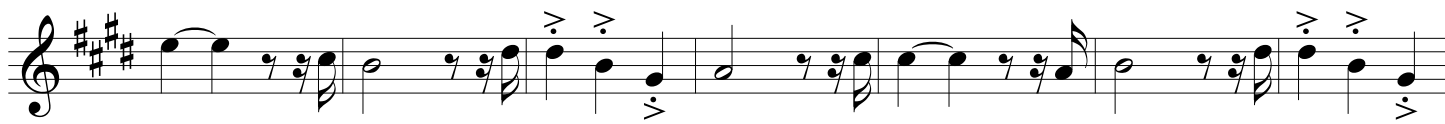
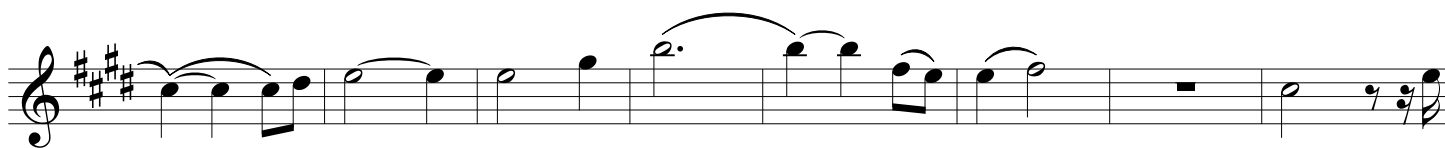
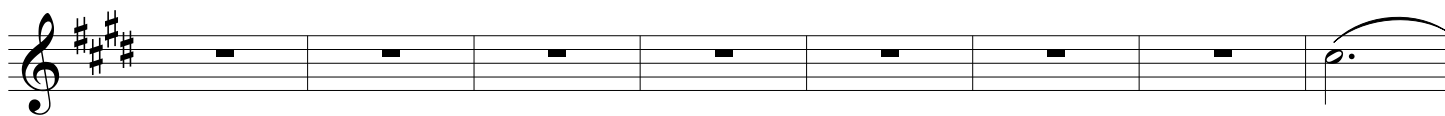
903

912

*mf* *f*

920













Musical notation for Suite Symphonique, page 19. The score is on a single staff in treble clef with a key signature of three sharps (F#, C#, G#). It consists of seven measures. The first measure has a quarter note G5 with an accent (>). The second measure has a quarter note G5 with an accent (>). The third measure has a half note G5. The fourth measure has a dotted quarter note G5 followed by an eighth rest. The fifth measure has a quarter note G5 with an accent (>), followed by a sixteenth note G5 with an accent (>), a sixteenth note F#5 with an accent (>), and a quarter rest. The sixth measure has a quarter rest. The seventh measure has a quarter rest. A dynamic marking of 'ff' (fortissimo) is placed below the notes in the fifth measure.