

Suite Symphonique "Regen"

Luigi Talarico

Allegro (M.M. ♩ = c. 120)

9

18

26

33

41

48

56

p

sfz

sfz

sfz

sfz

sfz

sfz

sfz

sfz

sfz

sfz

sfz

sfz

sffz

sffz

sffz

sffz

Suite Symphonique

2

65

74

82

90

99

107

115

123

131

139



147



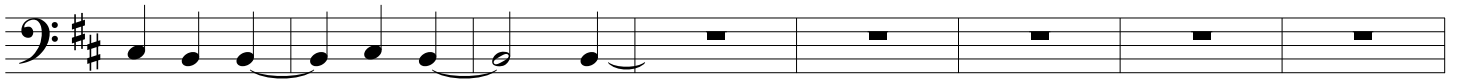
156



165



173



181



190



198



206



215

220

225

230

236

245

253

259

263

267

271

279

accel.

$\text{♩} = 140$

285

290

295

300

305

310

315

f

319

f

324

f *ff* *ff*

329

334

339

344

ff

348

351

mf 3/4

359

368

376

382

390

♩ = 145

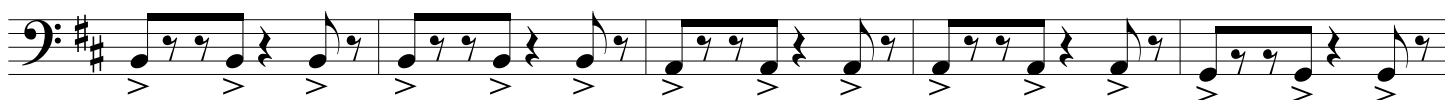
396

401

406

411

416



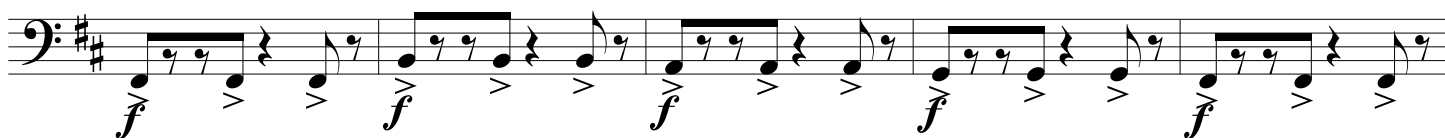
421



425



429



434



439



446

**Moderato** (♩ = c. 108)

453



458

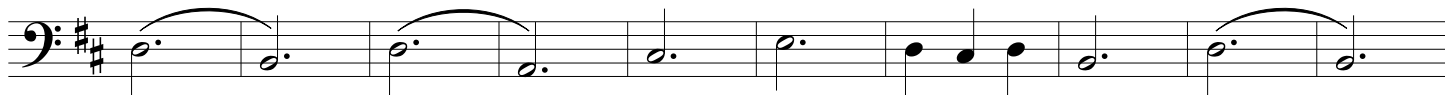


Suite Symphonique

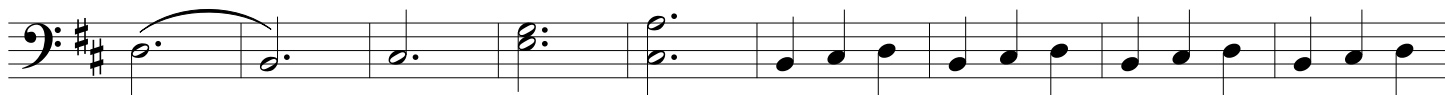
10

512

648



658



667



676



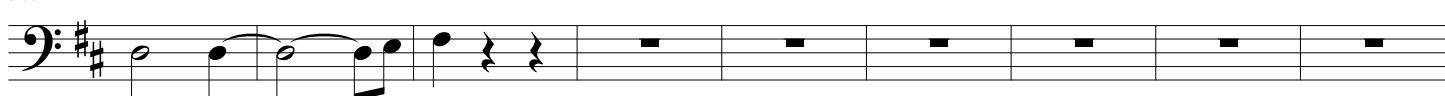
684



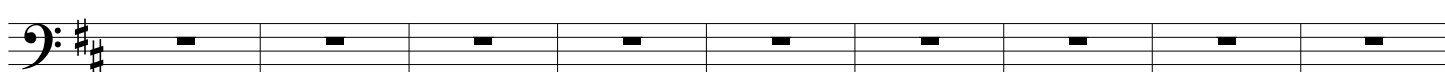
694



703

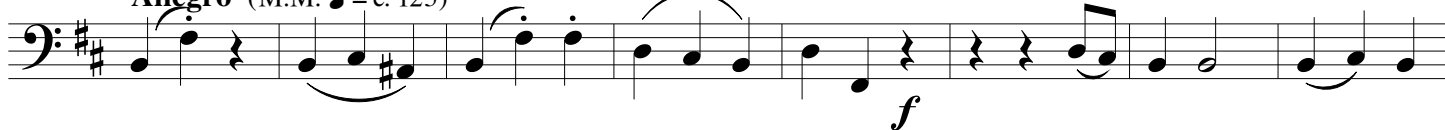


712



721

Allegro (M.M. ♩ = c. 125)



793

801

810

817

821

825

829

834

843

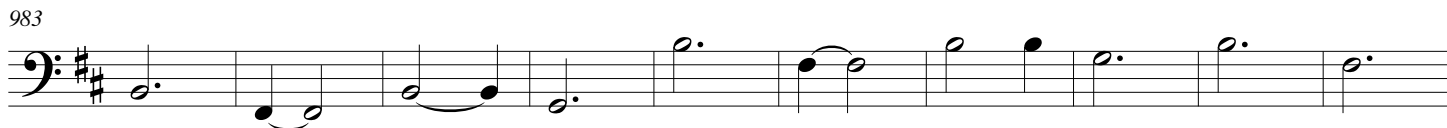
971



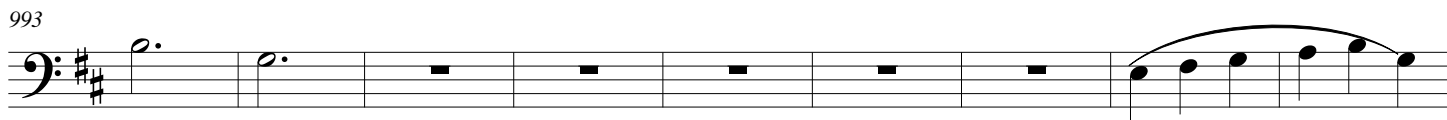
976

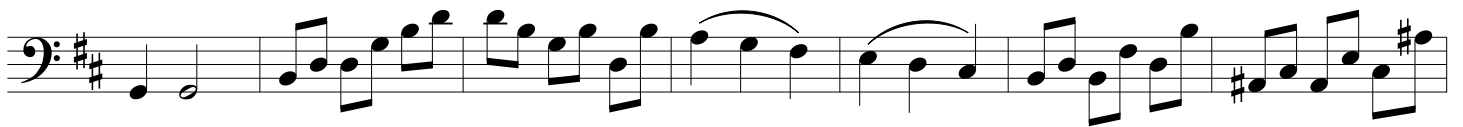


983



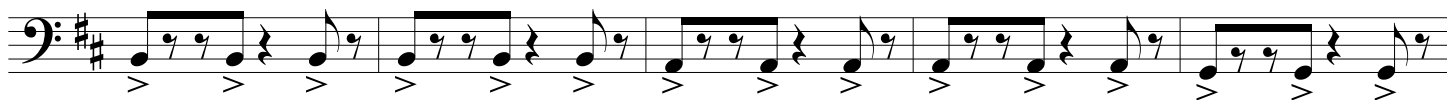
993





Allegro (M.M. ♩ = c. 145)





ff

mf

ff

accel.

$\text{♩} = 145$

Musical notation for Suite Symphonique, page 22. The notation is in bass clef with a key signature of one sharp (F#). It consists of four measures. The first measure contains a quarter note on G2, a quarter rest, a quarter note on G2, and a quarter note on F#2, with a forte (*f*) dynamic marking. The second measure contains a quarter note on G2, a quarter note on F#2, a quarter note on E2, and a quarter note on D2, with a fortissimo (*ff*) dynamic marking. The third measure contains a quarter note on G2, a quarter rest, and a quarter note on F#2. The fourth measure contains a whole rest. The piece ends with a double bar line.