

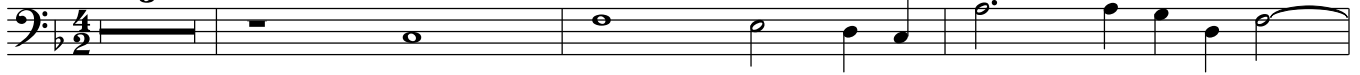
# Fugue No 6

arr. Hans Jorgen Messerschmidt

Josef Ferdinand Norbert Seger (1716-1782)

Allegro (♩=120)

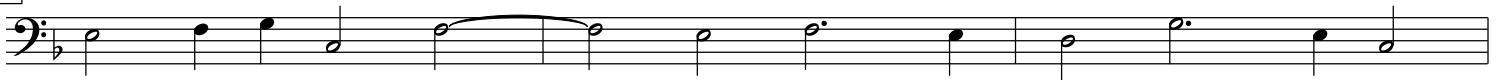
Euphonium



7



10



13



16



20



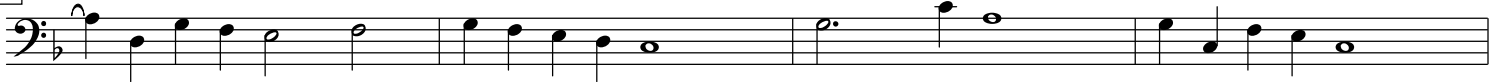
23



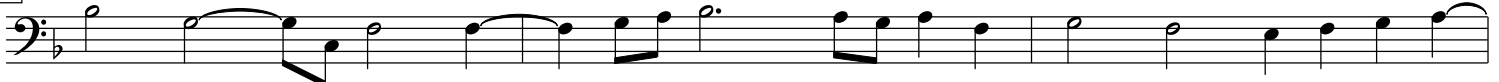
27



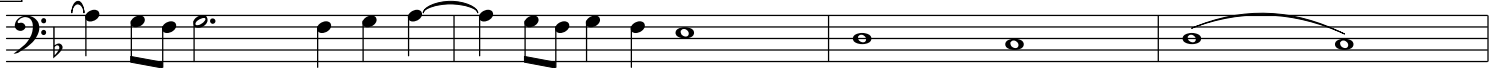
31



35



38



42

Euphonium

Musical notation for Euphonium, measure 42. The staff is in bass clef with a key signature of one flat. It contains two half notes: the first is on the second line (B-flat) and the second is on the second space (C), with a fermata over the second note.