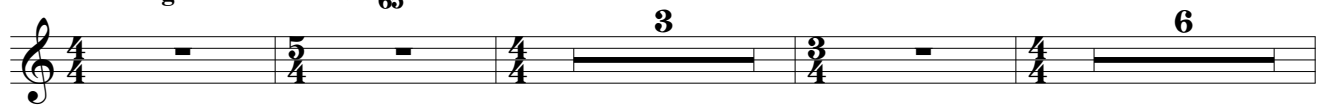
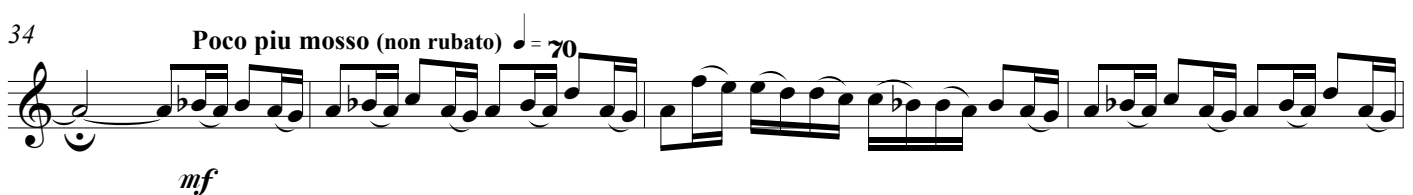


Larghetto e nobile $\text{♩} = 65$

Kees Schoonenbeek

13 *Rubato e espressivo*24 *Rubato e espressivo*

45

47

49

51

52

55

Poco ritenuto

58

Larghetto e nobile ♩ = 65

3

65

Ritenuo

mf Allegretto ♩ = 100

f

69

72

75

119

mf

122

125

128

f

131

f

136

139

142

145 **Espr**

mp

148

151

2

156

158 *f*

161

164 **Allargando** **Larghetto e nobile** ♩ = 65 **Rubato e espressivo**

168 *f*

171 **Allegretto**