

Violin 2

'Suite in d'

Kees Schoonenbeek

I Allegro $\text{♩} = 60$

6

11

16

21

26

31

36

41

46

51

p

mf

f

mf

p

mf

p

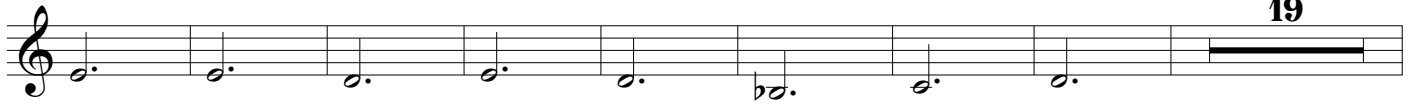
p

4

#

'Suite in d'

28



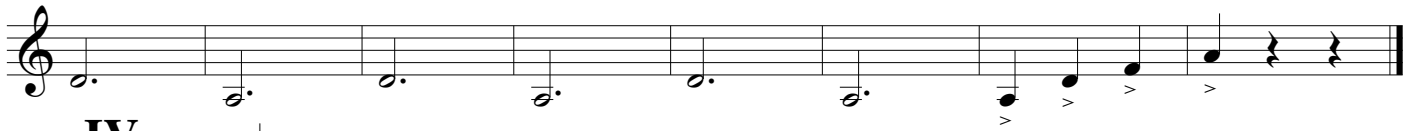
55



62



71



IV Andante $\text{♩} = 50$



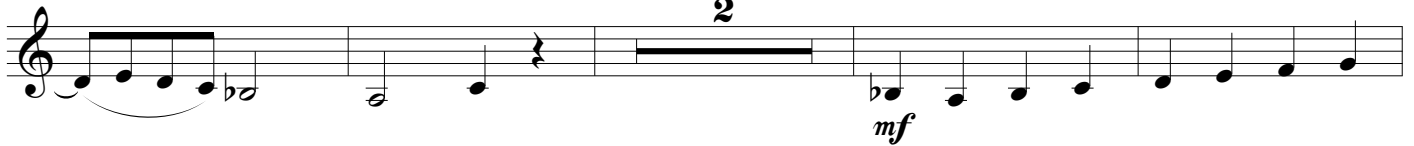
24



34



45



51



II

V Allegro ♩. = 110

7

mf *mp*

13

19

mf

25

31

mp

37

43

49

55

mp

61

mf

67

mp

