

DoubleBass

'Suite in d'

Kees Schoonenbeek

I Allegro ♩ = 60

Pizz

12 *mf* *mp*

18

24 *p*

II Andante ♩ = 70

Pizz

p 2 2 2

11 2 2 2

40 *Poco ritenuto* 2 3

III Giocoso ♩ = 160

Pizz

mp

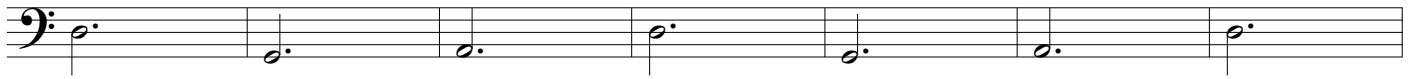
10 2

19

28

37 2

47



54



62

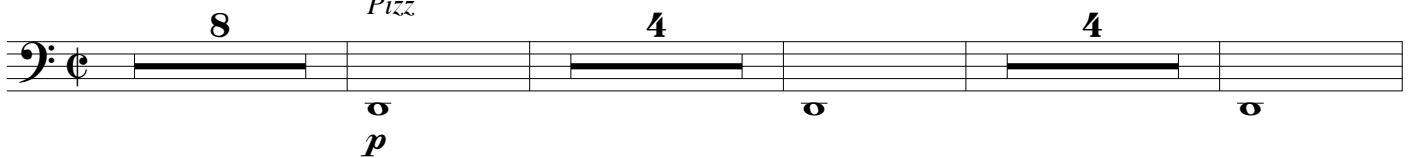


71

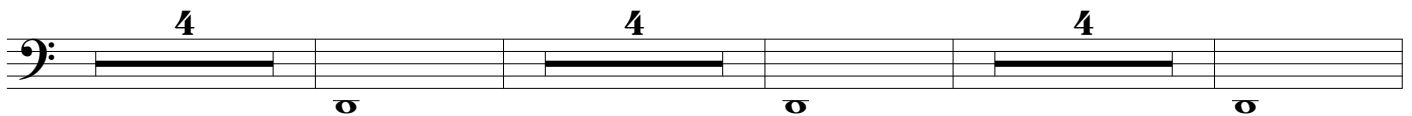


IV Andante ♩ = 50

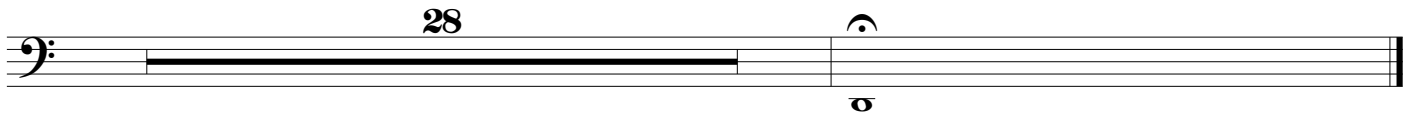
Pizz



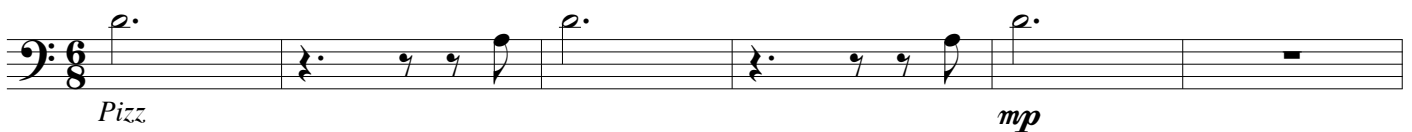
20



35



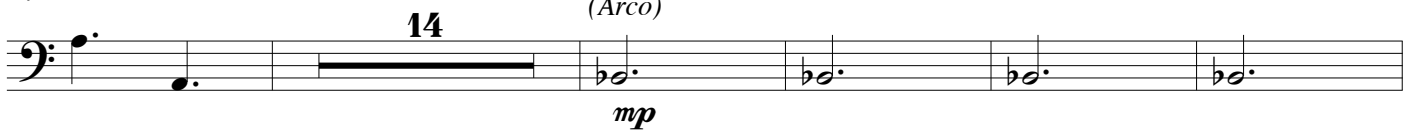
V Allegro ♩ = 110



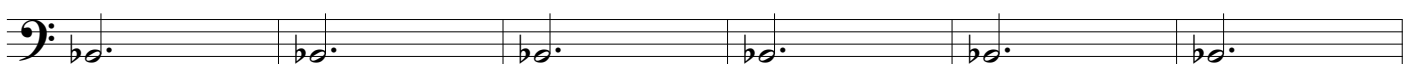
7



14



33



'Suite in d'

39



45



58



72



78



84



93 *Pizz*



99



106

