

B $\flat$  Bass

# 'Due organa'

Kees Schoonenbeek

Allegretto ♩ = 96

9 *mf*

15

25

Allegro ♩ = 110

*mf*

37

41 *mf*

47

51 *mf*

56 *mf*

63

69

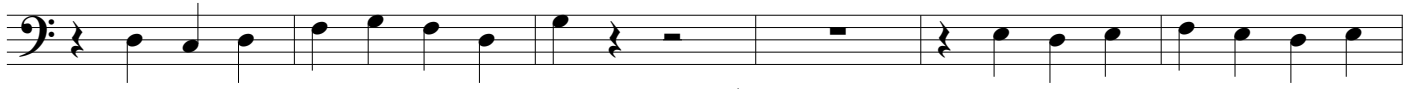
74 *mf*

84

83 **Tempo I**

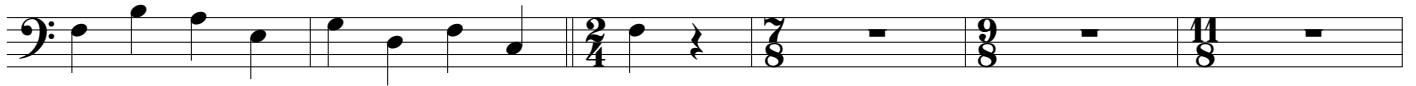


91 *mf*



97 *mf*

**Allegro** ♩ = 110



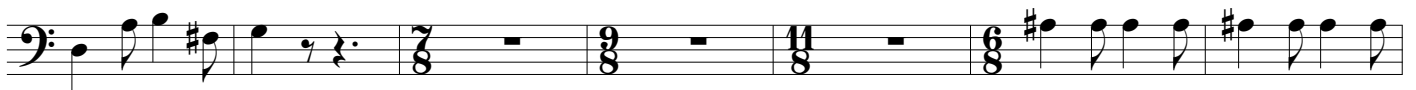
103



112



117



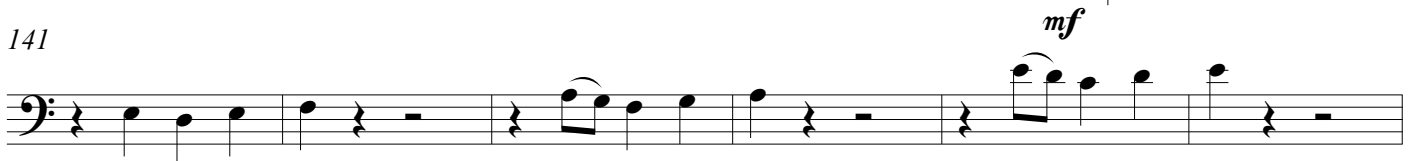
124



131



141



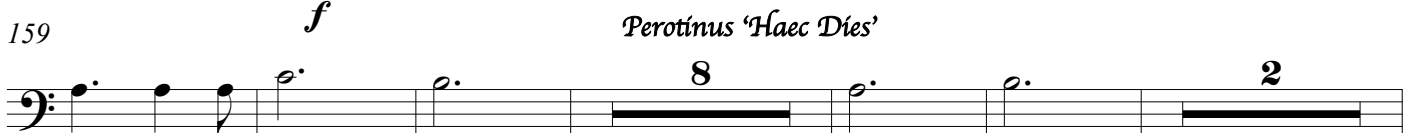
147



153



159



174

180

200

219 *f*

225

231

237

244

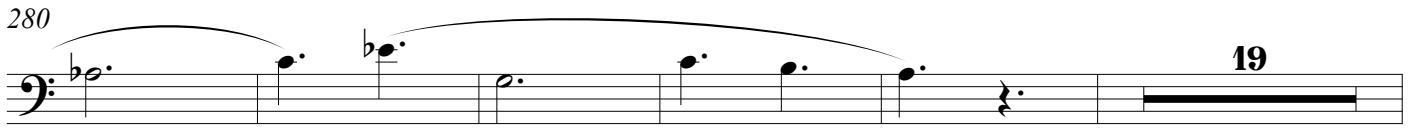
250

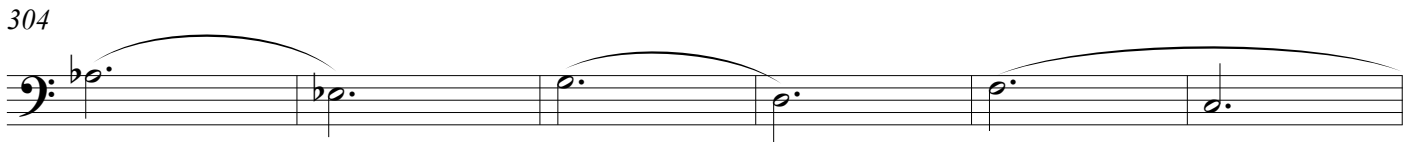
256 *f*

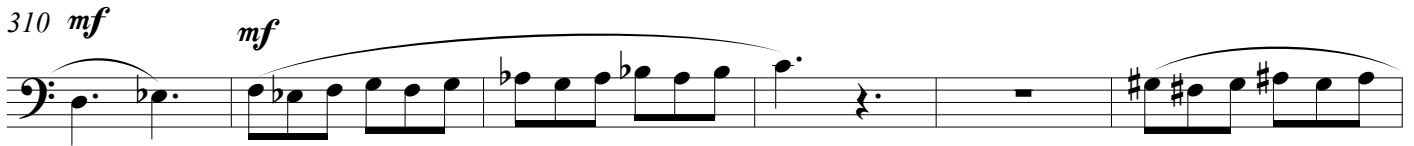
268 *mp*

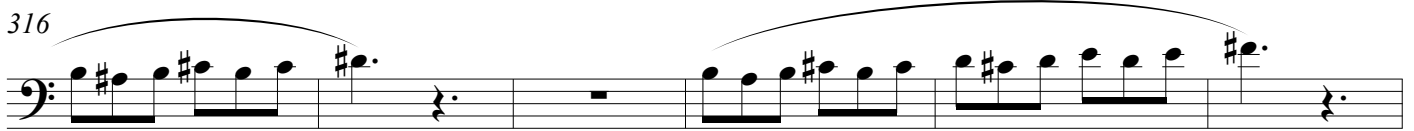
274

'Due organa'

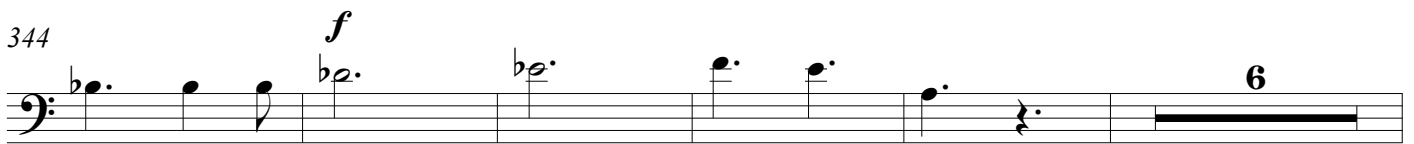
280  **19**

304 

310 *mf* *mf* 

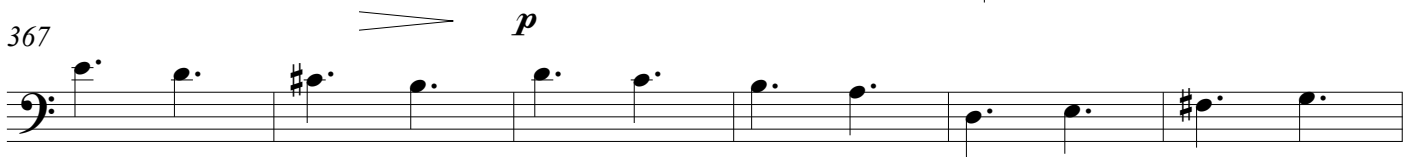
316 

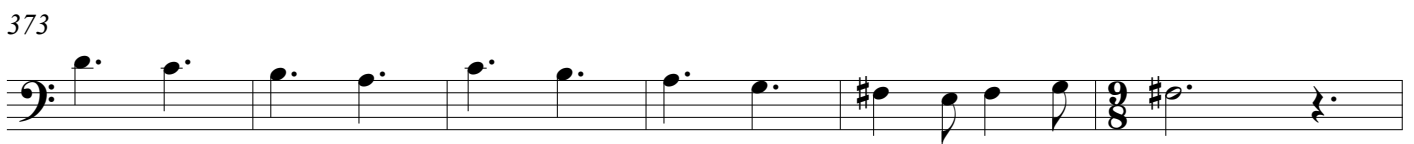
322  **17**

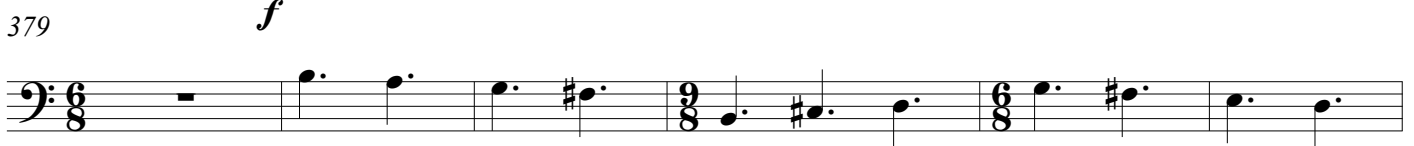
344 *f*  **6**

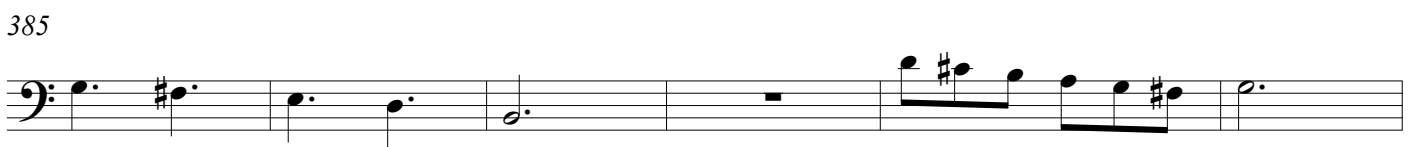
355 

361 *f* 

367  *p*

373 

379 *f* 

385 

391 *f*  **3**

'Due organa'

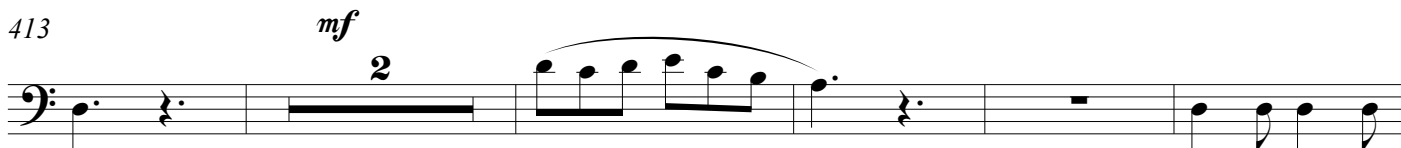
399



405 *mf*



413



420



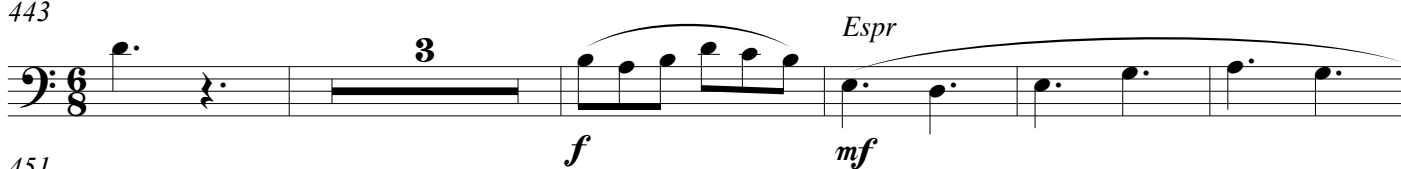
433 *mf*



443



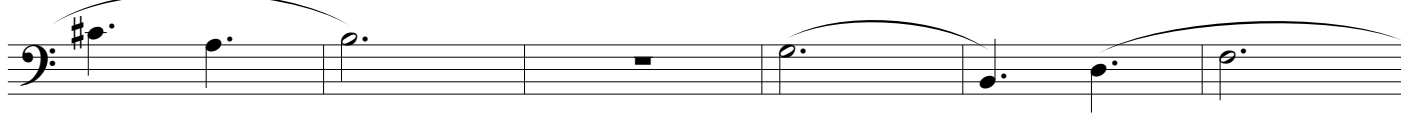
451



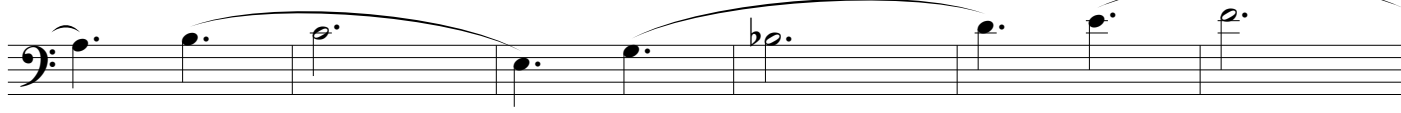
457



463



469



475



*f*

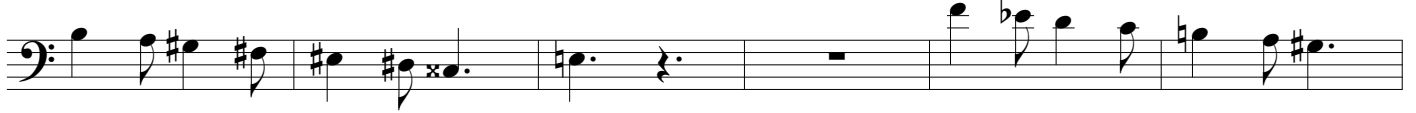


'Due organa'

481

A single staff of music in bass clef, starting with a key signature of one sharp (F#). It contains eight measures of music, primarily consisting of eighth and sixteenth notes with stems pointing downwards.

487

A single staff of music in bass clef. It contains eight measures, including a whole rest in the fourth measure and a key signature change to one flat (Bb) in the sixth measure.

493

A single staff of music in bass clef. It contains eight measures, starting with a whole rest in the first measure and a key signature change to one flat (Bb) in the second measure.

499

A single staff of music in bass clef, containing eight measures of music with eighth and sixteenth notes.

505

A single staff of music in bass clef, containing eight measures of music with eighth and sixteenth notes.


511

A single staff of music in bass clef, containing eight measures of music with eighth and sixteenth notes.

517

A single staff of music in bass clef, containing eight measures of music with eighth and sixteenth notes.

523

A single staff of music in bass clef. It contains eight measures, with a key signature change to two flats (Bb and Eb) in the second measure and a fermata over the final measure. The number '10' is written above the fermata.

538

Meno mosso  $\text{♩} = 96$

*f*

Ritenuito

A single staff of music in bass clef. It begins with a 2/4 time signature, changes to 4/4 in the second measure, and ends with a fermata. The tempo marking 'Meno mosso' with a quarter note equal to 96 is present. A dynamic marking of 'f' (forte) is shown below the first measure. The marking 'Ritenuito' is placed above the final measure, which contains a half note with a fermata.