

Viola

Concertino for alto-recorder and strings

Kees Schoonenbeek

I Allegro  $\text{♩} = 100$

8 *mp*

15

24 *mf*

31

38 *f*

45 *mf*

52 *f*

59 *mf*

66 *f*

73

80 *mf*

87



94



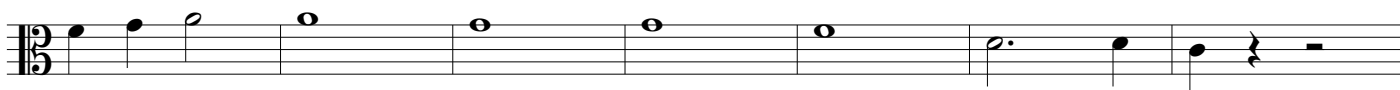
101



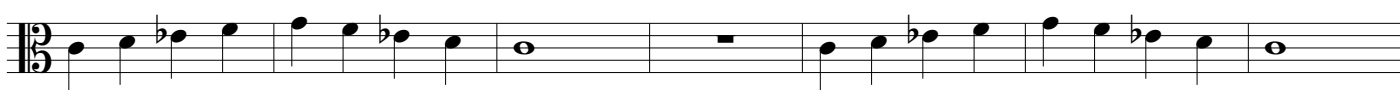
108



115



122



129 *f*



137



145



152



159



## II Andante ♩ = 70

Concertino for alto-recorder and strings

8 *p*

15 *mp*

24 *p*

31 *mp*

38 *p*

52 *p*

59 *p*

65 *mp*

71 *p*

## III Allegro ♩ = 110

18 *mf*

24

30 *f*

36



42



49



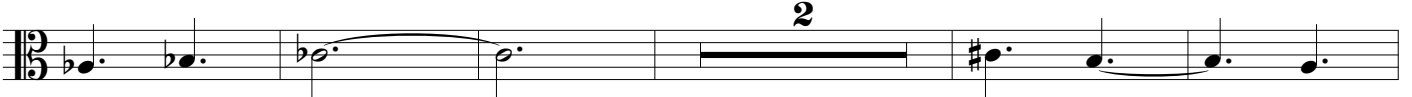
59 *f*



68



84



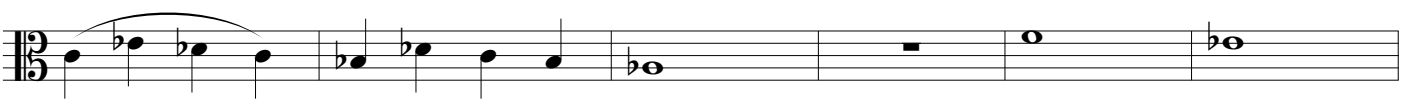
91



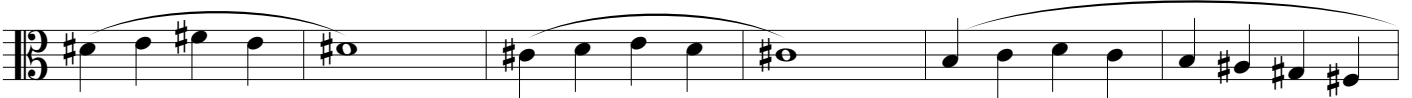
97



107



113 *mp*



119



126



132 Tempo I

18

Detailed description: This staff contains measures 132 to 154. It begins with a treble clef, a key signature of one flat (B-flat), and a 3/4 time signature. The music consists of a sequence of eighth and quarter notes. At the end of the staff, there is a double bar line followed by a 6/8 time signature and a fermata over the number 18.

155

Detailed description: This staff contains measures 155 to 160. It continues with the same key signature and time signature. The music features eighth notes with slurs and some quarter notes.

161 *mf*

Detailed description: This staff contains measures 161 to 166. It starts with a mezzo-forte (*mf*) dynamic. The music includes eighth notes with slurs and quarter notes.

167

2

Detailed description: This staff contains measures 167 to 173. It features a fermata over the number 2 in measure 173. The music consists of quarter and eighth notes.

174 *f*

Detailed description: This staff contains measures 174 to 179. It begins with a forte (*f*) dynamic. The music includes quarter notes and rests.

180

7 *mf*

Detailed description: This staff contains measures 180 to 191. It starts with a mezzo-forte (*mf*) dynamic. A fermata is placed over the number 7 in measure 180. The music includes quarter notes and eighth notes.

192

Detailed description: This staff contains measures 192 to 197. The music consists of quarter notes and rests.

198 *f*

Detailed description: This staff contains measures 198 to 203. It begins with a forte (*f*) dynamic. The music includes quarter notes and eighth notes.

204

3

Detailed description: This staff contains measures 204 to 211. It features a fermata over the number 3 in measure 211. The music includes quarter notes and eighth notes.

212

Detailed description: This staff contains measures 212 to 217. The music consists of quarter notes and eighth notes.

218

Detailed description: This staff contains measures 218 to 223. It features a long slur over measures 218 and 219, and a fermata over the final note in measure 223.