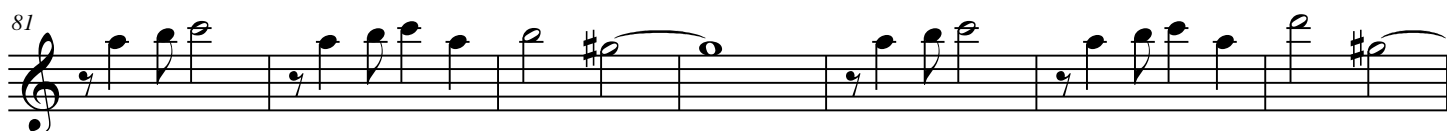
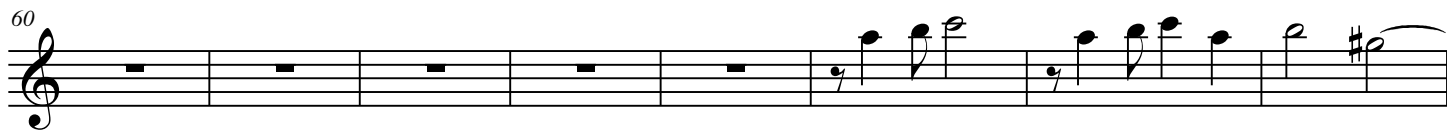
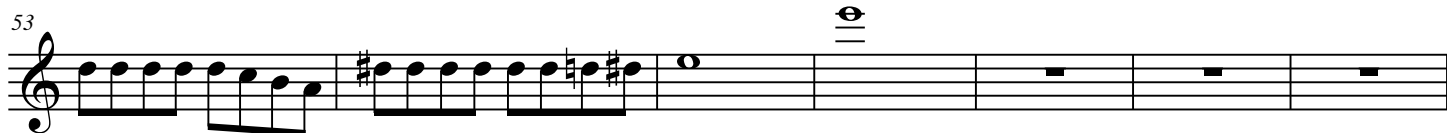


# Milonga

Gustavo O. Sbaco

The musical score for 'Milonga' is presented in seven staves of music, all in treble clef. The first staff (measures 1-8) consists of whole rests. The second staff (measures 9-15) begins with a treble clef and a common time signature. It features a melodic line with eighth and sixteenth notes, including slurs and accents. The third staff (measures 16-21) continues the melodic development with similar rhythmic patterns. The fourth staff (measures 22-28) includes a prominent slur over a pair of notes in measure 22. The fifth staff (measures 29-34) shows further melodic progression. The sixth staff (measures 35-40) features a slur over a pair of notes in measure 35. The seventh staff (measures 41-46) is characterized by a dense, rhythmic pattern of eighth notes. The eighth staff (measures 47-52) continues this rhythmic pattern with some melodic variation.

©2009 Gustavo O. Sbaco



106

112

121

129

137