

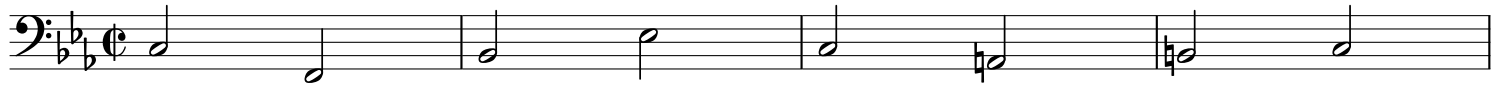
Cello

# "What Power art thou, who from below" *from "King Arthur"*

Henry Purcell (Z.628 Act III Scene 2 No. 22) 1691

Slow ( $\text{♩} = 22$ )

Interpretation for Oboe, Bassoon & Strings by Mike Magatagan 2023

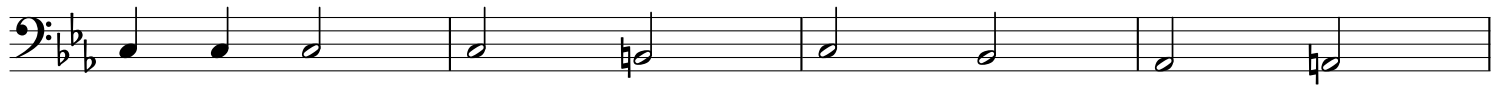


*mp*

5



9



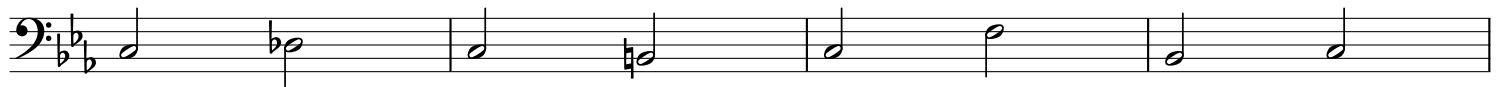
13



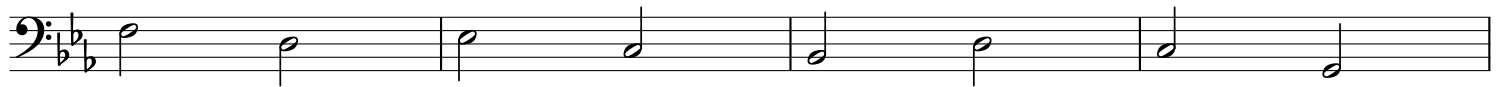
17



21



25



29



33

*rit.*

