

Territorios  
Cantata Nº 2

2005-2010  
Compositor: Oscar Eduardo Peña, Op. 12

Grave, ♩ = c.62

1.

Sord.

*mf* *fp* *sf* *p* *f*

5 *p* *mf* *pp* *f* *pp*

Allegro, ♩ = c.100

10 5 15 Senza Sord.

*p* *f*

20 Pizz. Arco 25

Pizz. Arco V 30

2 35 4 40 pizz.

*p* *mf*

45 Arco 3 50 2

*p* *mf* *pp* *ff*

Meno Mosso, ♩ = c.60

3 55 60

*f* *p* *pp* *ff*

V 3 65 5 70 Pizz.

*pp* *p* *f*

Arco 75

Pizz.

Arco

80

Sord.

85

90

(senza Sord.)

95

Pizz.

100

Arco V

2.

Andante,  $\text{♩}$  c. 60

Sord. V

10

15

(senza sord.) 20

25

30

35

mf

fp

**Allegro** (M.M. ♩ = c. 120)

40

45

50

55

60

65 5 70 2

75

80

85

Moderato,  $\text{♩}$  c. 100

3.

5

4

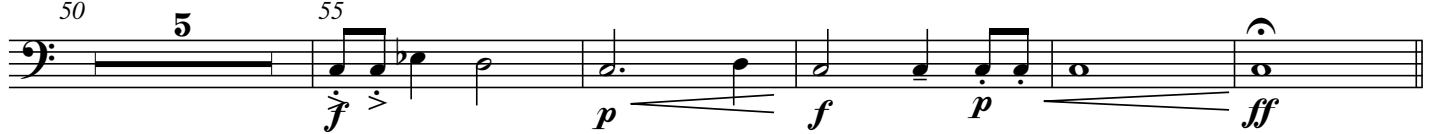
10

Meno mosso,  $\text{♩}$  c. 60

50

5

55



Tempo I, ♩ c. 100

60

*f*

65

70

*p* *f*

Pizz.

75

Arco

*mf*

80

3

V

85

*p* *f* *p*

*f*

Andante,  $\text{♩} = 62$

4.

Sord.

5

10

Senza Sord.

15

2

20

25

30

35

4

40

2

45

50

55

60

65

70

3

75

4

80

5

85

4

90

95

*pp* *mf* *p* *f* *ff* *fp* *p* *mf* *pp* *ff*

Moderato,  $\text{♩} \text{c. } 108$

100 *p* *f* *p* *f* *p* *f* *p* *f* *mf* Pizz. 105

Arco 110 *p* *fp* *sfz* *p* V

115 *f* *p* *f* *p* *f* 120

Tempo I,  $\text{♩} \text{c. } 62$

125 4 130 *p* *ff*