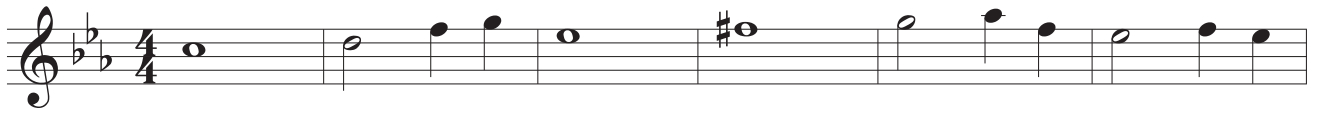


Il vecchio faro

di Alfredo Muzzi

♩ = 70



mp

7



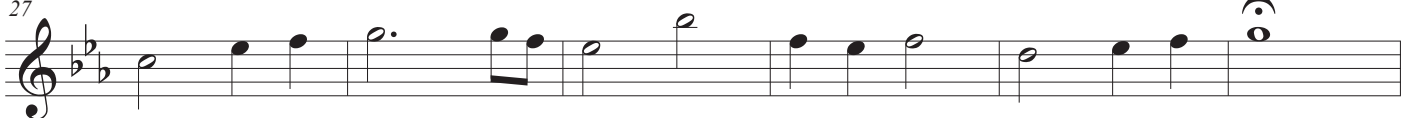
14



21

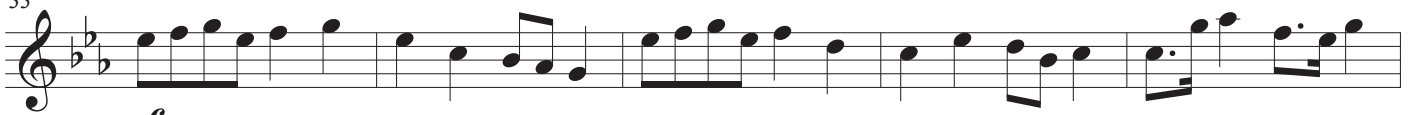


27



♩ = 90

33

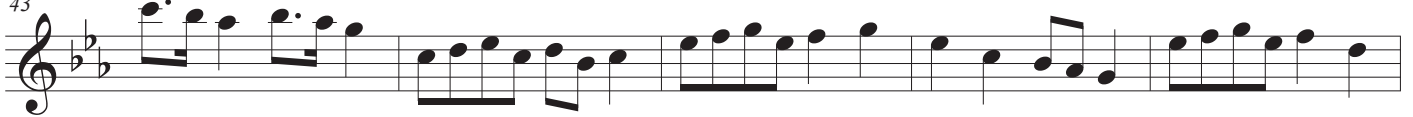


mf

38



43



48



Il vecchio faro

♩ = 70

53

mp

59

66

73

79

85

Harp

Il vecchio faro

di Alfredo Muzzi

♩ = 70

Harp

mp

Measures 1-4 of the piece. The music is in 4/4 time with a key signature of two flats (B-flat and E-flat). The tempo is marked as quarter note = 70. The first system shows the beginning of the piece with a mezzo-piano (*mp*) dynamic. The right hand plays a melody of quarter notes, and the left hand plays a bass line of quarter notes.

Hp.

Measures 5-9. The right hand continues the melody, and the left hand continues the bass line. The music remains in 4/4 time and two flats.

Hp.

Measures 10-14. The right hand melody includes a chromatic movement in measure 10. The left hand continues the bass line.

Hp.

Measures 15-19. The right hand melody continues with quarter notes. The left hand continues the bass line.

Hp.

Measures 20-24. The right hand melody continues. The left hand continues the bass line.

Hp.

Measures 25-29. The right hand melody continues. The left hand continues the bass line.

Il vecchio faro = 90

2
30

Hp.

mf

35

Hp.

39

Hp.

43

Hp.

47

Hp.

51

Hp.

Il vecchio faro ♩ = 70

55

Hp.

mp

59

Hp.

64

Hp.

69

Hp.

74

Hp.

79

Hp.

84

Hp.