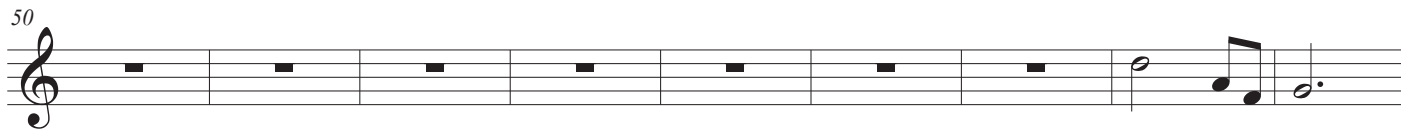
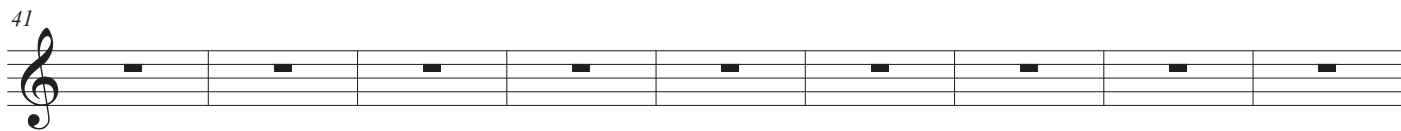
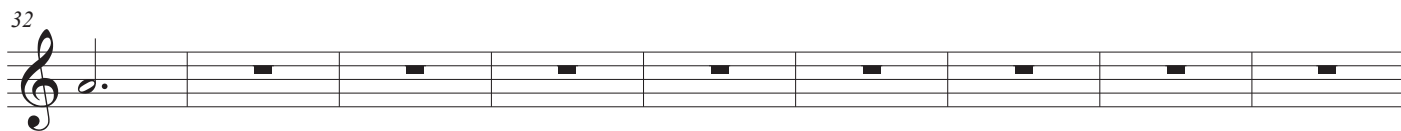
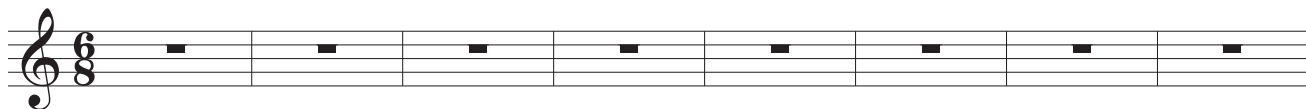


Passando per la città

di Alfredo Muzzi

♩. = 120



Harp

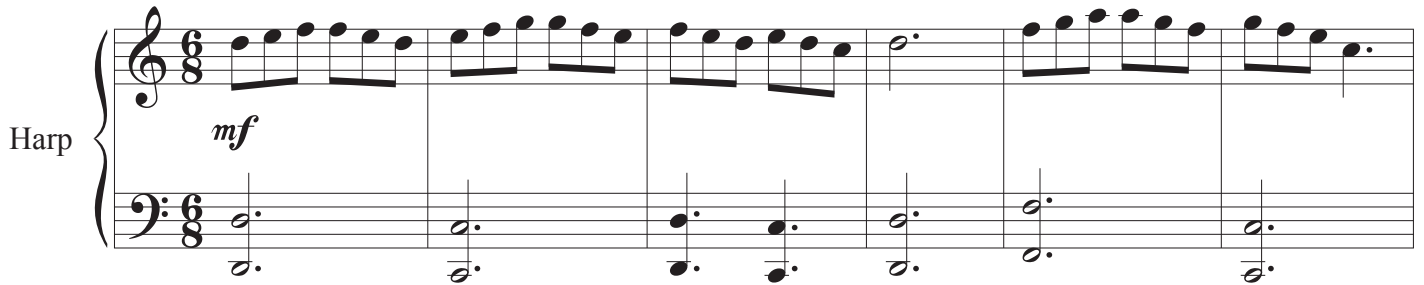
Passando per la città

di Alfredo Muzzi


♩. = 120

Harp

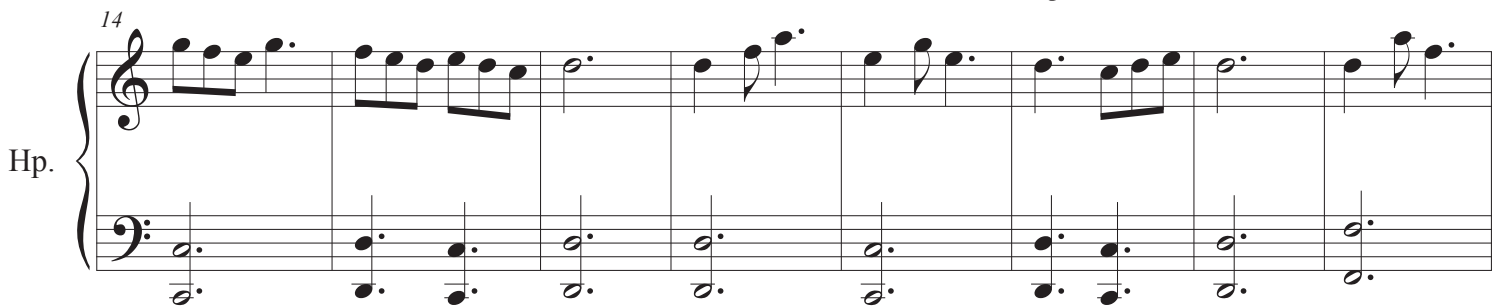
mf



Hp.



Hp.



Hp.



Hp.

mp



Hp.



Passando per la città

2
46

Hp.

mf

53

Hp.

60

Hp.

68

Hp.

76

Hp.

mp

84

Hp.

Passando per la città

92

mf

Hp.

This system contains measures 92 through 98. The right hand (treble clef) features a melodic line with eighth and sixteenth notes, including some grace notes. The left hand (bass clef) provides a harmonic accompaniment with chords and single notes. A dynamic marking of *mf* is present in the middle of the system.

99

Hp.

This system contains measures 99 through 105. The right hand continues with a melodic line of eighth and sixteenth notes. The left hand accompaniment consists of chords and single notes.

106

Hp.

This system contains measures 106 through 112. The right hand continues with a melodic line of eighth and sixteenth notes. The left hand accompaniment consists of chords and single notes.

113

Hp.

This system contains measures 113 through 120. The right hand continues with a melodic line of eighth and sixteenth notes. The left hand accompaniment consists of chords and single notes.

121

Hp.

This system contains measures 121 through 127. The right hand continues with a melodic line of eighth and sixteenth notes. The left hand accompaniment consists of chords and single notes. The system concludes with a double bar line.