

Incertezze

di Alfredo Muzzi

♩ = 120

mf

8

16

24

30

36

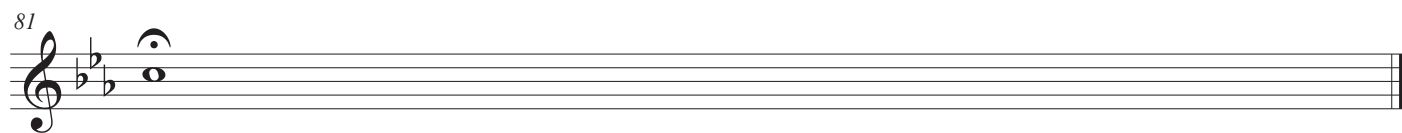
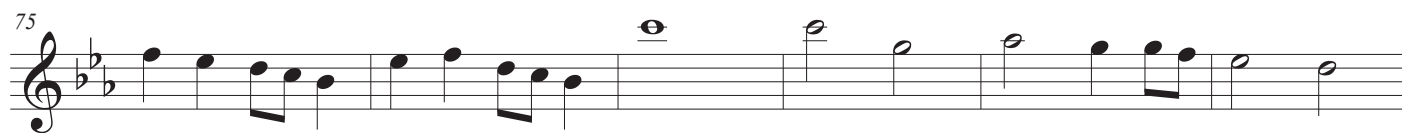
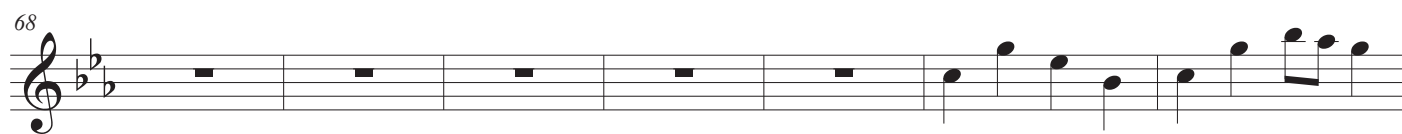
p

42

48

mf

54



Incertezze

di Alfredo Muzzi

$\text{♩} = 120$

mf

7

14

20

27

34

41

46

53

Piano

Incertezze

di Alfredo Muzzi

$\text{♩} = 120$

Piano

mf

Pno.

Pno.

Pno.

Pno.

Pno.

Incertezze

2
33

Pno.

38

Pno.

44

Pno.

49

Pno.

54

Pno.

60

Pno.

The image displays a piano score for a piece titled "Incertezze". The score is organized into six systems, each labeled "Pno." on the left. Each system consists of a grand staff with a treble clef on the upper staff and a bass clef on the lower staff. The key signature is three flats (B-flat, E-flat, A-flat), and the time signature is 2/3. The first system starts at measure 2 and ends at measure 33. The second system starts at measure 38. The third system starts at measure 44. The fourth system starts at measure 49. The fifth system starts at measure 54. The sixth system starts at measure 60. The music features a complex interplay between the two hands, with the right hand often playing more active, melodic lines and the left hand providing harmonic support with chords and bass lines. The notation includes various note values, rests, and dynamic markings.

Incertezze

65

Pno.

70

Pno.

75

Pno.

81

Pno.