

# Resurrection 1

**♩=60**

Violin

Bar 9

19 *mf*

24 *f*

27 *mp*

32 *f*

36 *mf* *Ad Libitum* *f*

39 *f*

46

51 poco a poco cresc..

53 *ff*

56 *mp*

60 *mf*

63 *mp* rit...

68 *p* *mp* *A Tempo*

76 *p* *f*

Detailed description: This musical score consists of five staves of music in G major. The first staff (measures 56-59) starts with a treble clef and a key signature of one sharp (F#). It features a melodic line with a dynamic marking of *mp* and a crescendo hairpin. The second staff (measures 60-62) continues the melody with a dynamic marking of *mf* and includes a 3/4 time signature change. The third staff (measures 63-67) shows a melodic line with a dynamic marking of *mp*, a 3/4 time signature change, and a *rit...* marking. The fourth staff (measures 68-75) is marked *A Tempo* and starts with a dynamic marking of *p*, followed by a crescendo to *mp*. The fifth staff (measures 76-79) begins with a dynamic marking of *p* and ends with a dynamic marking of *f*.

# Resurrection 2

Violin

$\text{♩} = 100$

4

7

10

12

14

16

18

20

1.

22 2.

*mf*

25

*f*

29

*mf*

32

*mf*

36

*f*

38

$\frac{2}{4}$   $\frac{3}{4}$

41

$\frac{3}{4}$   $\frac{2}{4}$

44

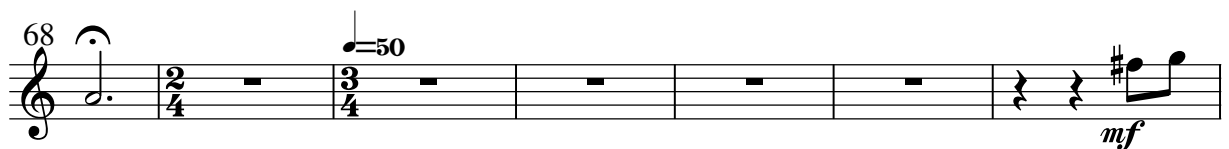
$\frac{2}{4}$   $\frac{3}{4}$

47

*mf*

50

*mf*



## Resurrection 3

Bar 20 = 160

Violin

23

27

33

38

42

48

52

56

59

61

66

*f*

*mf*

*f*

*mf*

Musical score for page 2, measures 71-128. The score is written in treble clef and includes various musical notations such as notes, rests, and dynamic markings.

Measures 71-75: Treble clef, starting with a quarter rest, followed by eighth notes and quarter notes. A slur covers measures 74-75.

Measures 76-80: Treble clef, starting with a quarter note, followed by eighth notes and quarter notes. A slur covers measures 77-78.

Measures 81-86: Treble clef, starting with a quarter rest, followed by quarter notes and eighth notes. A dynamic marking *f* is present at measure 81.

Measures 87-89: Treble clef, starting with a quarter note, followed by eighth notes and quarter notes. A slur covers measures 88-89.

Measures 90-91: Treble clef, starting with a quarter note, followed by eighth notes and quarter notes. A 9/8 time signature change is indicated.

Measures 92-96: Treble clef, starting with a quarter note, followed by eighth notes and quarter notes. A slur covers measures 95-96.

Measures 97-101: Treble clef, starting with a quarter rest, followed by quarter notes and eighth notes. A dynamic marking *mf* is present at measure 97.

Measures 102-106: Treble clef, starting with a quarter note, followed by eighth notes and quarter notes.

Measures 107-112: Treble clef, starting with a quarter rest, followed by quarter notes and eighth notes.

Measures 113-117: Treble clef, starting with a quarter note, followed by eighth notes and quarter notes.

Measures 118-122: Treble clef, starting with a quarter note, followed by eighth notes and quarter notes. A dynamic marking *f* is present at measure 118.

Measures 123-127: Treble clef, starting with a quarter note, followed by eighth notes and quarter notes.

Measures 128-132: Treble clef, starting with a quarter note, followed by eighth notes and quarter notes. A slur covers measures 131-132.

Musical score for six staves, measures 132-154. The notation is in treble clef. The first staff (132) begins with a *mf* dynamic. The second staff (135) contains a sharp sign (#) above a note. The third staff (139) features a *f* dynamic. The fourth staff (144) continues the melodic line. The fifth staff (150) shows a continuation of the melody. The sixth staff (154) includes a *mf* dynamic and a *Rit.....* marking above the staff.