

# Resurrection 1

Oboe

♩ = 60

5

9

*mp*

14

19

*mf*

24

*mf*

27

*mp*

32

36

*mp*

39

2/4

41

*f*

46

poco a poco cresc..

51

2/4

54

*ff* *f*

56

*mf* *mp*

60

*mp*

63

# Resurrection 2

Oboe

$\bullet = 100$

*f*

4

7

10

12

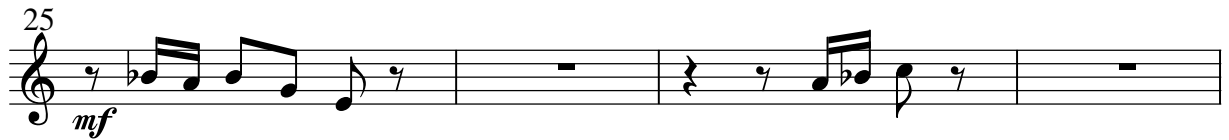
14

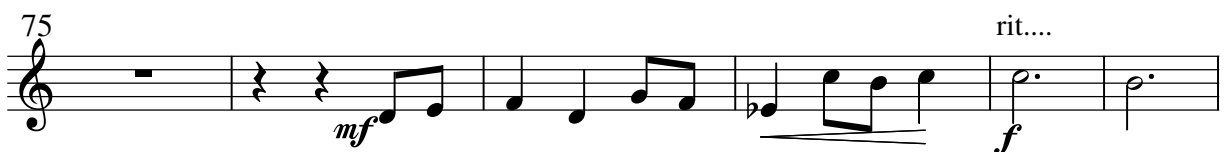
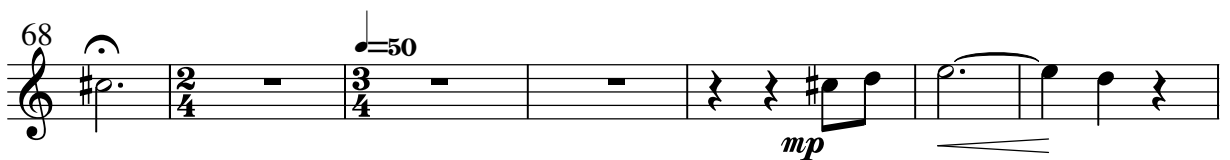
16

18

20

1.





## Resurrection 3

Bar 20  $\text{♩} = 160$

Oboe

mf

mf

f

f

mf

f

f

mf

f

mf

f

71

76

81

87

90

Fl. 92

97

102

107

113

118

123

128

The image shows a musical score for a Flute 1 part, spanning measures 71 to 128. The score is written in treble clef and 6/8 time. It consists of ten staves of music. The first staff (measures 71-75) begins with a treble clef and a key signature of one sharp (F#). The second staff (measures 76-80) continues the melody. The third staff (measures 81-86) features a dynamic marking of *f* (forte). The fourth staff (measures 87-91) includes a key signature change to one flat (Bb) and a time signature change to 9/8. The fifth staff (measures 92-96) is marked with 'Fl.' and shows a change in the melodic line. The sixth staff (measures 97-101) continues the piece. The seventh staff (measures 102-106) features a melodic line with a key signature change to two sharps (D major). The eighth staff (measures 107-112) continues the melody. The ninth staff (measures 113-117) continues the piece. The tenth staff (measures 118-122) continues the melody. The eleventh staff (measures 123-127) continues the piece. The twelfth staff (measures 128-132) continues the piece.

Musical score for six staves, measures 132-154. The notation is in treble clef with a key signature of one sharp (F#). The score includes dynamic markings (*mf*, *f*) and a *Rit.....* instruction. The music features various rhythmic patterns, including eighth and sixteenth notes, and rests.

132 *mf*

135

139 *f*

144

150

154 *mf* *Rit.....*