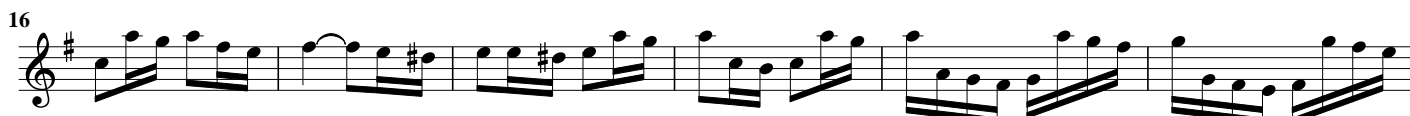


Sonata Da Chiesa in G Prelude

♩=70





II Fuga

Inst.inC $\text{♩} = 70$

10

17

22

28

36

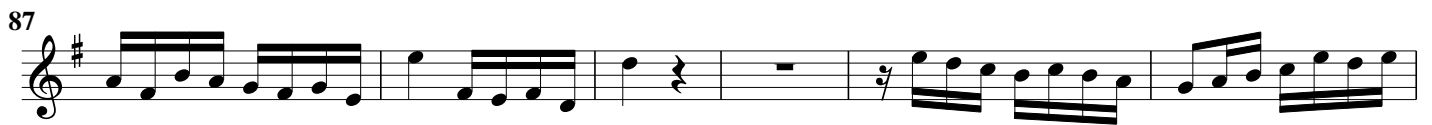
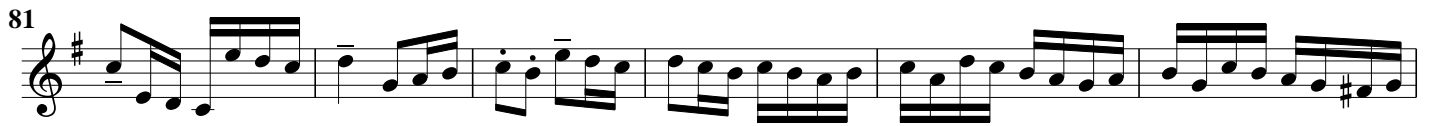
42

48

56

64

70



III Siciliano

espressivo
♩ = 55

Inst. in C

f *mf* *mp* *mf*

7 *mp* *f*

13 *mf* *mf* *molto espressione*
♩ = 50

20 *f*

26 *mf*

32 *f* *mf* *mp*

38 *mf* *f*

43

48

53 *mf* ♩ = 55

59 *mp* *mf*

