

B, Trumpet

# 'Jewish Folksongs'

Kol nidre ♩ = 80

Arr Kees Schoonenbeek

Musical score for 'Kol nidre' in 4/4 time, starting at measure 1. The piece begins with a piano (*p*) dynamic. The melody is written in treble clef. Measure 6 starts with a sixteenth-note triplet. Measure 14 features a triplet of eighth notes. Measure 19 includes a triplet of eighth notes and a triplet of sixteenth notes. The piece concludes with a triplet of eighth notes. The dynamic changes to *P.a.p. accelerando* at measure 19.

Heiveinu shalom alaychem ♩ = 130

Musical score for 'Heiveinu shalom alaychem' in 4/4 time, starting at measure 28. The piece begins with a forte (*f*) dynamic. The melody is written in treble clef. Measure 35 features a triplet of eighth notes. Measure 41 includes a triplet of eighth notes. Measure 47 features a triplet of eighth notes. Measure 55 features a triplet of eighth notes. The piece concludes with a triplet of eighth notes.

64 Oif'n pripitshik ♩ = 90

72

79

86

93

Detailed description: This block contains the musical notation for the first piece, 'Oif'n pripitshik'. It is written in treble clef with a 3/4 time signature. The tempo is marked as ♩ = 90. The score consists of five staves of music. The first staff (measures 64-71) begins with a double bar line and a '2' above it, indicating a two-measure rest. The melody is primarily eighth and quarter notes, often beamed together. The second staff (measures 72-78) continues the melody with similar rhythmic patterns. The third staff (measures 79-85) shows a continuation of the melodic line. The fourth staff (measures 86-92) features a similar rhythmic and melodic structure. The fifth staff (measures 93) concludes the piece with a final melodic phrase and a double bar line.

97 Artsa Alinu ♩ = 120

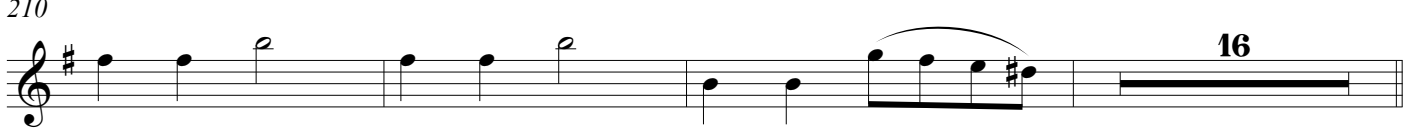
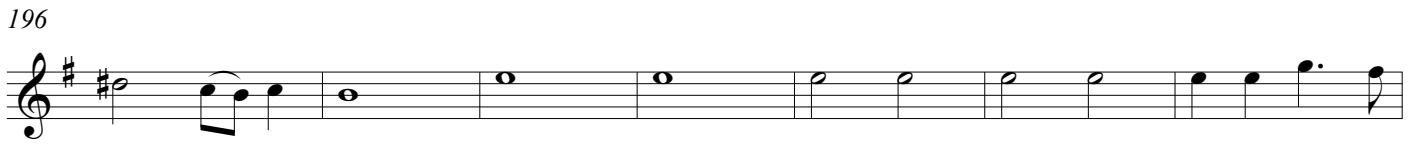
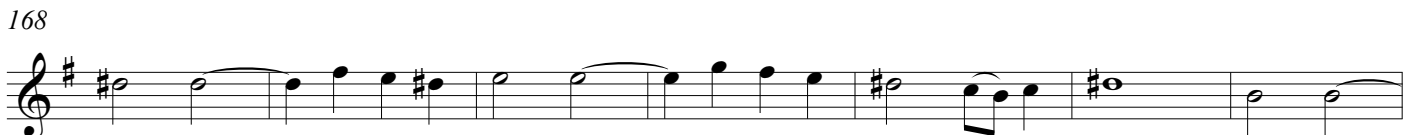
104

109

115

Detailed description: This block contains the musical notation for the second piece, 'Artsa Alinu'. It is written in treble clef with a 4/4 time signature. The tempo is marked as ♩ = 120. The score consists of four staves of music. The first staff (measures 97-103) begins with a double bar line and a '4' above it, indicating a four-measure rest. The melody starts with a forte (*f*) dynamic. The second staff (measures 104-108) continues the melody. The third staff (measures 109-114) shows a continuation of the melodic line. The fourth staff (measures 115) concludes the piece with a final melodic phrase and a double bar line.

128 Lomir zich iberbetn ♩ = 120



Tum balalaika ♩ = 150

229

mf

239

246

mp

253

mf

260

Erev shel shoshanim ♩ = 90

265

mf

271

275

279

283