

GRANDE TARANTELLA

contrafagotto

HERMAN RECHBERGER
AIGION GREECE 2020

♩ = 60

4

mp *mf*

8

mp

12

mp

17

mp

23

mp

29

mp

Presto ♩ = c. 136

44

p

50

p

56

mp

73

mf

96

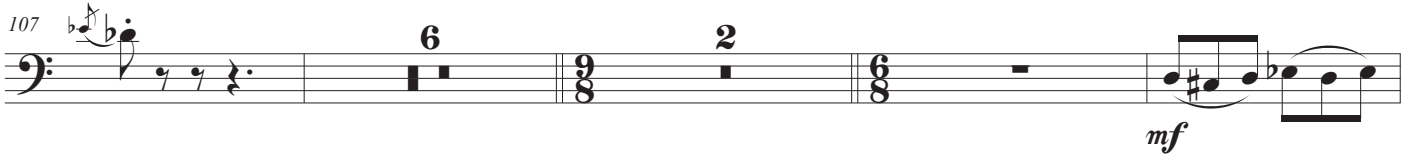


mp *sf* *sf*

7

Detailed description: This system covers measures 96 to 106. Measure 96 starts with a dynamic of *mp* and features a series of eighth notes with accents, transitioning to a fortissimo *sf* section. A fermata is placed over measure 106. Measure 107 begins with a fermata and the dynamic *sf*. Measure 108 is marked with a '7' above the staff.

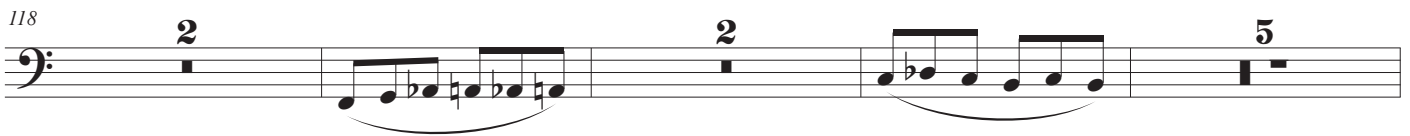
107



6 2 *mf*

Detailed description: This system covers measures 107 to 117. Measure 107 has a fermata and *mf* dynamic. Measures 108-117 include a section with a '6' above the staff, followed by a section with a '2' above the staff, and a final section with a *mf* dynamic. Measure 118 is marked with a '9' above the staff.

118



2 2 5

Detailed description: This system covers measures 118 to 128. Measure 118 is marked with a '2' above the staff. Measures 119-128 include sections with '2' and '5' above the staff, and various musical notations including slurs and ties.

129



f 8 *p*

Detailed description: This system covers measures 129 to 140. Measure 129 starts with a dynamic of *f*. Measure 139 has a dynamic of *p*. Measure 140 is marked with an '8' above the staff.

141



Detailed description: This system covers measures 141 to 146. It features a series of rests followed by eighth notes with accents. Measure 147 is marked with a '6' above the staff.

147



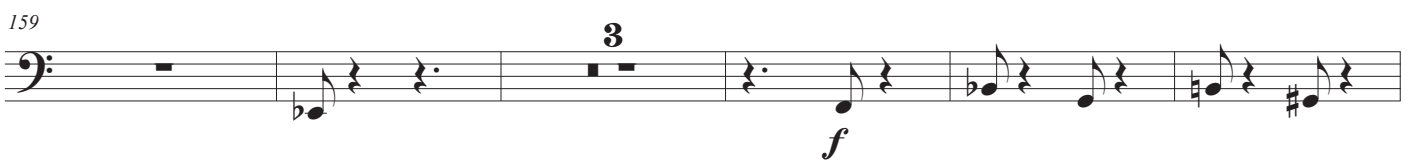
Detailed description: This system covers measures 147 to 152. It features a series of rests followed by eighth notes with accents. Measure 153 is marked with a '6' above the staff.

153



Detailed description: This system covers measures 153 to 158. It features a series of rests followed by eighth notes with accents. Measure 159 is marked with a '6' above the staff.

159



3 *f*

Detailed description: This system covers measures 159 to 166. Measure 166 is marked with a '3' above the staff and a dynamic of *f*. Measure 167 is marked with a '6' above the staff.

167



mf

Detailed description: This system covers measures 167 to 172. Measure 172 has a dynamic of *mf*. Measure 173 is marked with a '6' above the staff.

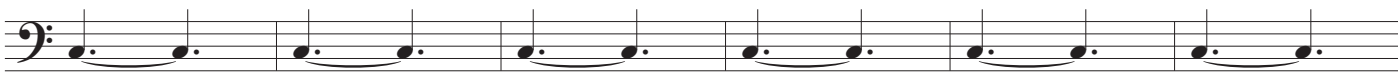
173



21

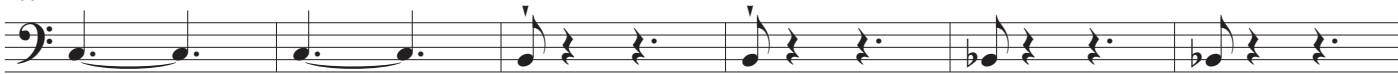
Detailed description: This system covers measure 173, which consists of a single whole note chord. Measure 173 is marked with a '21' above the staff.

194

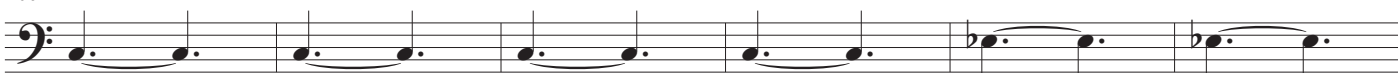


pp

200



206



p

mf

212



pp

p

218

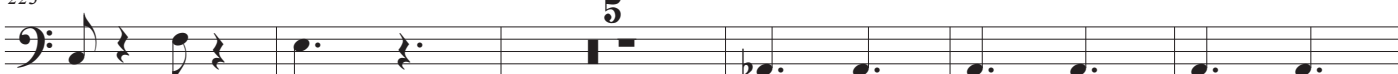


mp

mf

f

223



5

p

233



mf

238



p

243



248



5

392

23

pp

419

424

14

p

443

6 2 6

453

12

mp

469

474

sf *p*

479

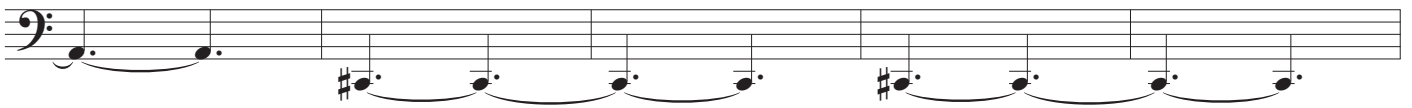
484

489

495



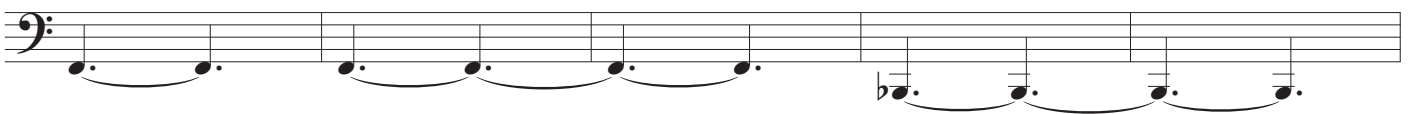
500



505



510



515



520



525



530



535



540



546

551

556

561

568

572

576

581

586

591

601

mf

607

7

f

618

623

628

633

638

ff

644

f

4

653

f

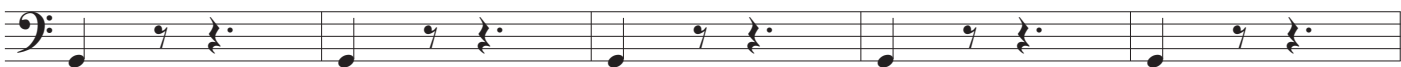
659

f

665



671



676



682



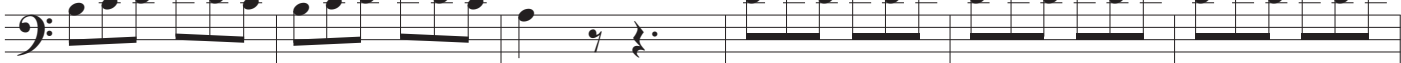
687



692



697



703

