

Violin 2

Sonata in E Minor

G.F. Händel (HWV 379) ca. 1727

Interpretation for Flute & Strings by Mike Magatagan 2023

I. Larghetto (♩ = 44)

mp

Measures 1-4 of the first movement, starting with a treble clef, a key signature of one sharp (F#), and a common time signature (C). The music begins with a melodic line in the right hand and a supporting bass line in the left hand.

5

Measures 5-8 of the first movement, continuing the melodic and harmonic development.

9

Measures 9-12 of the first movement, featuring a more active melodic line.

13

Measures 13-16 of the first movement, showing a continuation of the melodic theme.

17

Adagio e rit.

Measures 17-20 of the first movement, marked *Adagio e rit.*, featuring a slower tempo and a more expressive melodic line.

II. Andante (♩ = 98)

mp

Measures 1-6 of the second movement, starting with a treble clef, a key signature of one sharp (F#), and a 3/4 time signature. The music is marked *mp*.

7

Measures 7-11 of the second movement, featuring a rhythmic pattern of eighth and sixteenth notes.

12

Measures 12-19 of the second movement, continuing the rhythmic and melodic development.

20

Measures 20-25 of the second movement, showing a continuation of the melodic theme.

26

Measures 26-31 of the second movement, concluding the piece with a final melodic phrase.

31



38



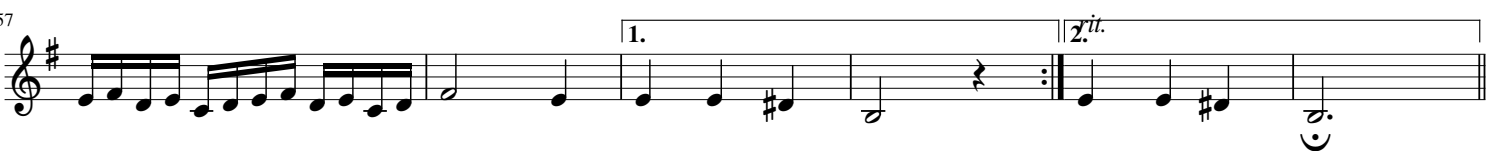
44



52



57



III. Largo (♩ = 50)



7



13



18



IV. Allegro (♩ = 45)



9



18



27



33



42



51



60



69



V. Presto (♩ = 130)



9



15



23



30

