

La Chapelle à L'Arrière

David Greenberg

Euphonium *Fanfare - Ouverture des portes...*

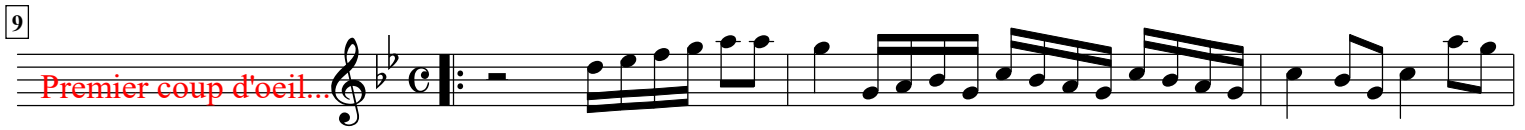


3



9

Premier coup d'oeil...



12



17



21



27



32

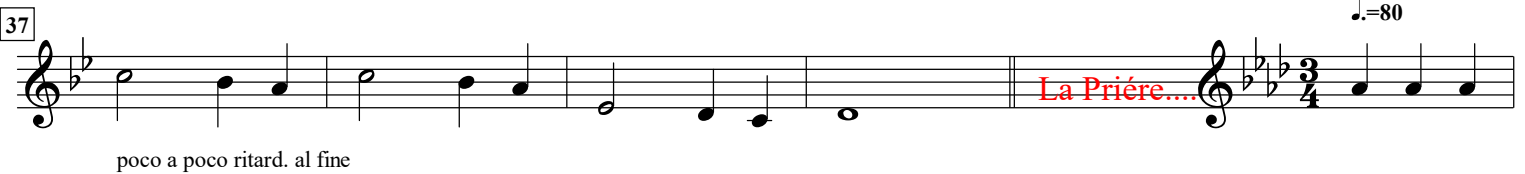


37

La Prière....

$\text{♩} = 80$

poco a poco ritard. al fine



42



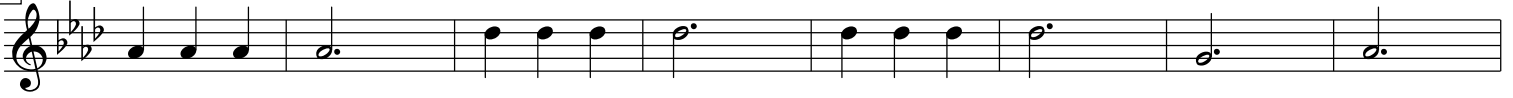
arr. H. J. Messerschmidt

48

Euphonium



55



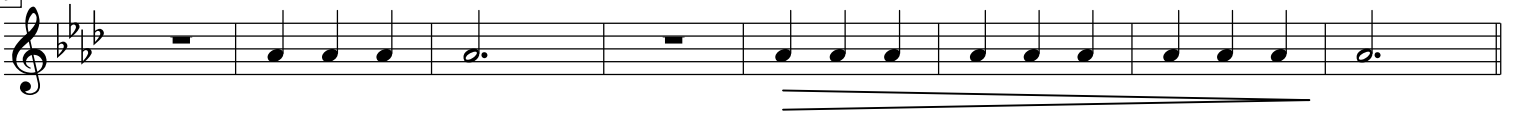
63



71



79



87

Carillon....



92



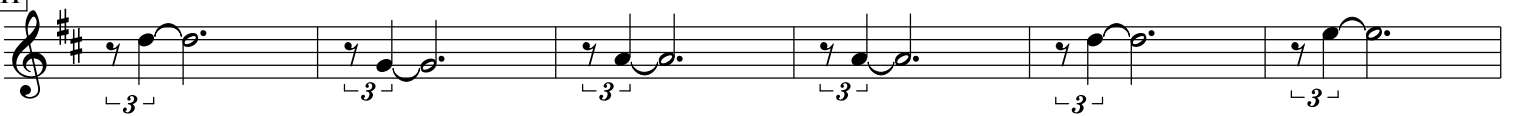
99



105



111



117



122

Euphonium

Musical notation for Euphonium, measure 122. The staff is in treble clef with a key signature of two sharps (F# and C#). The melody consists of three notes: a half note G4, a half note A4, and a half note B4, all beamed together under a single slur. A fermata is placed over the B4 note. The staff ends with a double bar line.