

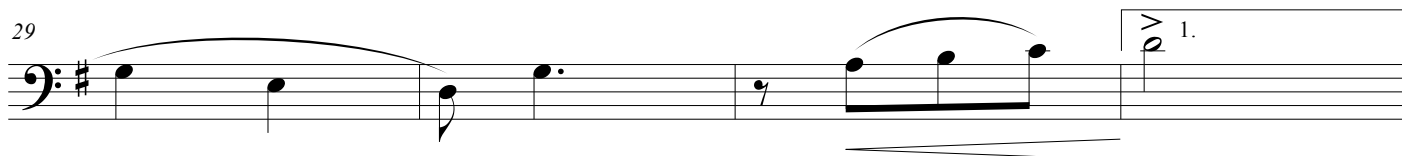
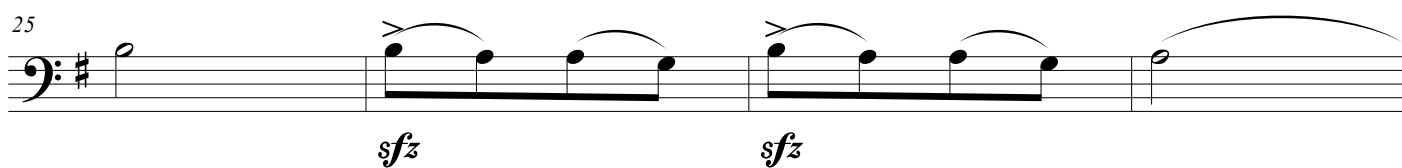
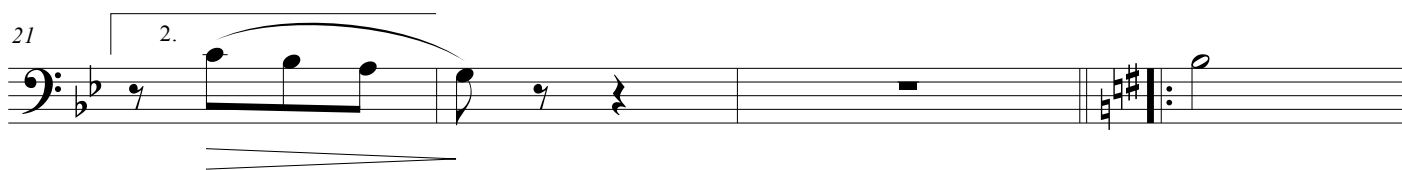
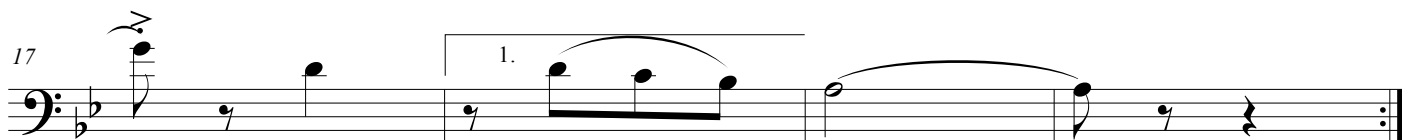
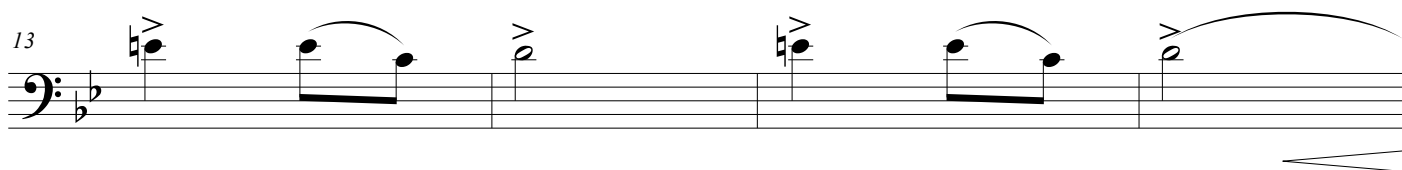
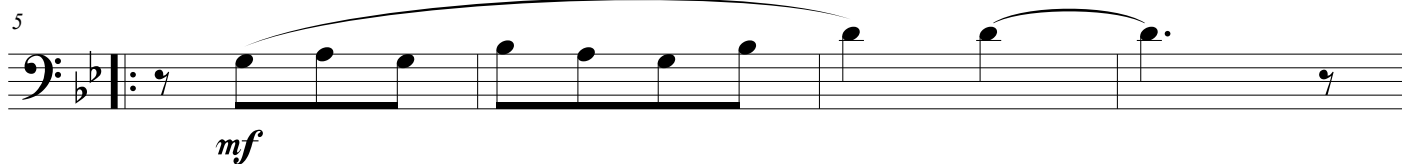
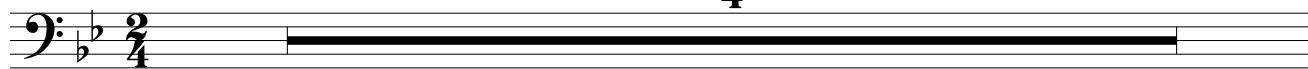
Swanee

Basson

George Gershwin (1919)
Transc. : Bernard Dewagtere

Spirits

4



Swanee

2
33

37

41

45

49

53

57

61

mp f

dolce

1. 2.

Detailed description: This image shows the bass line of the piece 'Swanee'. It consists of eight staves of music. The key signature is one sharp (F#), and the time signature is 2/4. The music begins at measure 33. The first staff (measures 33-36) features a half note F#4, a quarter rest, a quarter note G4, and a half note A4. The second staff (measures 37-40) starts with a half note A4, followed by quarter notes B4, C5, and B4, then a half note A4. A first ending bracket covers measures 39-40, and a second ending bracket covers measure 40. The third staff (measures 41-44) begins with a half note A4, followed by quarter notes B4, C5, and B4, then a half note A4. The fourth staff (measures 45-48) starts with a quarter note G4, followed by quarter notes F#4, E4, and D4, then a quarter rest. The fifth staff (measures 49-52) begins with a half note D4, followed by quarter notes E4, F#4, and E4, then a quarter rest. The sixth staff (measures 53-56) starts with a half note D4, followed by quarter notes E4, F#4, and E4, then a quarter rest. The seventh staff (measures 57-60) begins with a half note D4, followed by quarter notes E4, F#4, and E4, then a quarter rest. The eighth staff (measures 61-64) starts with a half note D4, followed by quarter notes E4, F#4, and E4, then a quarter rest. The piece concludes with a double bar line. Dynamics include *mp* and *f* at measure 45, and *dolce* at measure 49. First and second endings are marked at measures 39-40 and 61-64.