

Elise - Overture - 2. mov.

arr. Hans Jorgen Messerschmidt

Luigi Cherubini (1760-1842)

Piu Mosso (♩=108)

Euphonium



7



13



19



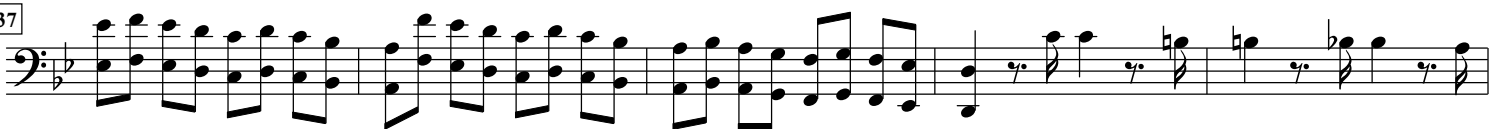
26



32



37



42



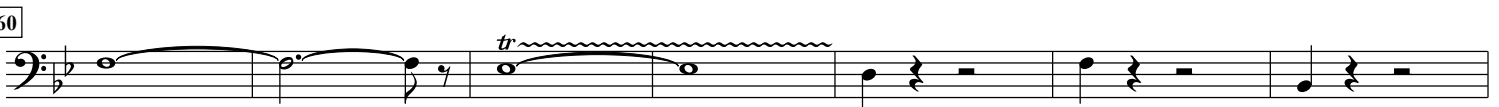
47



53



60



67

Euphonium

Musical notation for Euphonium, measure 67. The staff is in bass clef with a key signature of one flat (B-flat). The notation consists of six measures. The first measure contains a quarter note G2, a quarter rest, and a quarter note G2. The second measure contains a quarter note F2, a quarter rest, and a quarter note F2. The third measure contains a quarter note E2, a quarter rest, and a quarter note E2. The fourth measure contains a half note D2. The fifth measure contains a half note C2. The sixth measure contains a whole note B1 with a fermata above it. The piece ends with a double bar line.